

# Anti-KAT3B / p300 Antibody

## ER1908-18



<b>Product Type:</b>	Rabbit polyclonal IgG, primary antibodies
<b>Species reactivity:</b>	Human, Mouse, Rat, Monkey
<b>Applications:</b>	WB
<b>Molecular Wt:</b>	Predicted band size: 264 kDa

**Description:** Histone acetyltransferase p300 also known as p300 HAT or E1A-associated protein p300 (where E1A = adenovirus early region 1A) also known as EP300 or p300 is an enzyme that, in humans, is encoded by the EP300 gene. It functions as histone acetyltransferase that regulates transcription of genes via chromatin remodeling by allowing histone proteins to wrap DNA less tightly. This enzyme plays an essential role in regulating cell growth and division, prompting cells to mature and assume specialized functions (differentiate), and preventing the growth of cancerous tumors. The p300 protein appears to be critical for normal development before and after birth.

**Immunogen:** Recombinant protein within human KAT3B / p300 aa 51-350.

**Positive control:** 293T cell lysate, HeLa cell lysate, LoVo cell lysate, C2C12 cell lysate, PC-12 cell lysate, COS-1 cell lysate.

**Subcellular location:** Cytoplasm, Nucleus, Chromosome.

**Database links:** SwissProt: Q09472 Human | B2RWS6 Mouse  
Entrez Gene: 170915 Rat

**Recommended Dilutions:**  
**WB** 1:20,000

**Storage Buffer:** PBS (pH7.4), 0.1% BSA, 40% Glycerol. Preservative: 0.05% Sodium Azide.

**Storage Instruction:** Shipped at 4°C. Store at +4°C short term (1-2 weeks). It is recommended to aliquot into single-use upon delivery. Store at -20°C long term.

**Purity:** Immunogen affinity purified.

Hangzhou Huaan Biotechnology Co., Ltd.

Orders:0086-571-88062880

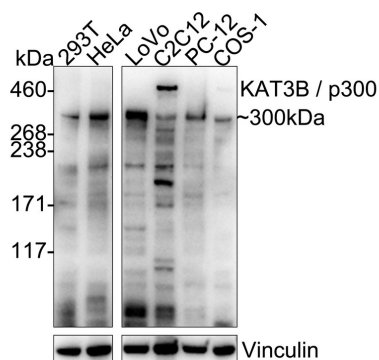
Technical:0086-571-89986345

Service mail:support@huabio.cn

  
www.huabio.cn

## Images

**Fig1:** Western blot analysis of KAT3B / p300 on different lysates with Rabbit anti-KAT3B / p300 antibody (ER1908-18) at 1/20,000 dilution.



Lane 1: 293T cell lysate  
 Lane 2: HeLa cell lysate  
 Lane 3: LoVo cell lysate  
 Lane 4: C2C12 cell lysate  
 Lane 5: PC-12 cell lysate  
 Lane 6: COS-1 cell lysate

Lysates/proteins at 20 µg/Lane.

Predicted band size: 264 kDa  
 Observed band size: 300 kDa

Exposure time: 3 minutes; ECL: K1801;

3-8% SDS-PAGE gel.

Proteins were transferred to a PVDF membrane and blocked with 5% NFD/MTBST for 1 hour at room temperature. The primary antibody (ER1908-18) at 1/20,000 dilution was used in 5% BSA at 4°C overnight. Goat Anti-Rabbit IgG - HRP Secondary Antibody (HA1001) at 1/50,000 dilution was used for 1 hour at room temperature.

**Note:** All products are "FOR RESEARCH USE ONLY AND ARE NOT INTENDED FOR DIAGNOSTIC OR THERAPEUTIC USE".

## Background References

1. Nicosia L et al. Therapeutic targeting of EP300/CBP by bromodomain inhibition in hematologic malignancies. *Cancer Cell*. 2023 Dec
2. Durbin AD et al. EP300 Selectively Controls the Enhancer Landscape of MYCN-Amplified Neuroblastoma. *Cancer Discov*. 2022 Mar

Hangzhou Huan Biotechnology Co., Ltd.

Orders:0086-571-88062880

Technical:0086-571-89986345

Service mail:support@huabio.cn

华安生物  
 HUABIO  
 www.huabio.cn