

Anti-ENPP7 Antibody

ER1908-15



| | |
|-------------------------------|--|
| Product Type: | Rabbit polyclonal IgG, primary antibodies |
| Species reactivity: | Human |
| Applications: | WB |
| Molecular Wt: | 50 KDa |
| Description: | Converts sphingomyelin to ceramide. Also has phospholipase C activity toward palmitoyl lyso-phosphocholine. Does not appear to have nucleotide pyrophosphatase activity. |
| Immunogen: | KLH conjugated synthetic peptide derived from human ENPP7 351-458/458 |
| Positive control: | Detected in the colon (at protein level). Expressed in the duodenum, jejunum and liver and at low levels in the ileum. Expression was very low in the esophagus, stomach and colon. |
| Subcellular location: | Membrane; Single-pass type I membrane protein (Potential). Note=Localized at the surface of the microvillar membrane in small intestine enterocytes, and in endosome-like structures situated beneath the microvillar membrane, and in Golgi complex. |
| Database links: | SwissProt: Q6UWW6 Human |
| Recommended Dilutions: | |
| WB | 1:500-2000 |
| Storage Buffer: | 0.01M TBS(pH7.4) with 1% BSA, 0.03% Proclin300 and 50% Glycerol. |
| Storage Instruction: | Store at -20℃ for one year. Avoid repeated freeze/thaw cycles. The lyophilized antibody is stable at room temperature for at least one month and for greater than a year when kept at -20℃. When reconstituted in sterile pH 7.4 0.01M PBS or diluent of antibody the antibody is stable for at least two weeks at 2-4℃. |
| Purity: | Protein A affinity purified. |

Hangzhou Huaan Biotechnology Co., Ltd.

Orders:0086-571-88062880

Technical:0086-571-89986345

Service mail:support@huabio.cn

华安生物
HUABIO
www.huabio.cn

Applications:WB=Western blot IHC-P=Immunohistochemistry (paraffin) IF-Cell=Immunofluorescence (Cell) IF-Tissue=Immunofluorescence (Tissue) FC=Flow cytometry IP=Immunoprecipitation

Images

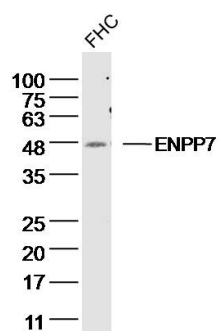


Fig1: Sample: FHC (human)Cell Lysate at 40 ug
 Primary: Anti- ENPP7 (ER1908-15) at 1/300 dilution
 Secondary: IRDye800CW Goat Anti-Rabbit IgG at 1/20000 dilution
 Predicted band size: 50 kD
 Observed band size: 48 kD

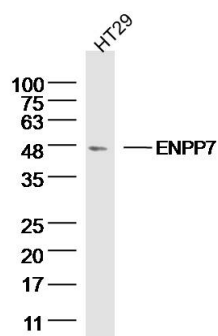


Fig2: Sample: HT29 (human)Cell Lysate at 40 ug
 Primary: Anti- ENPP7 (ER1908-15) at 1/300 dilution
 Secondary: IRDye800CW Goat Anti-Rabbit IgG at 1/20000 dilution
 Predicted band size: 50 kD
 Observed band size: 50 kD

Note: All products are "FOR RESEARCH USE ONLY AND ARE NOT INTENDED FOR DIAGNOSTIC OR THERAPEUTIC USE".

Hangzhou Huaan Biotechnology Co., Ltd.

Orders:0086-571-88062880

Technical:0086-571-89986345

Service mail:support@huabio.cn

华安生物
HUABIO
www.huabio.cn

Applications:WB=Western blot IHC-P=Immunohistochemistry (paraffin) IF-Cell=Immunofluorescence (Cell) IF-Tissue=Immunofluorescence (Tissue) FC=Flow cytometry IP=Immunoprecipitation