

Anti-Endomucin Antibody

ER1908-09



Product Type:	Rabbit polyclonal IgG, primary antibodies
Species reactivity:	Human, Mouse
Applications:	IHC-P, IF-Tissue
Molecular Wt:	25 kDa

Description: Endothelial sialomucin, also called endomucin or mucin-like sialoglycoprotein, which interferes with the assembly of focal adhesion complexes and inhibits interaction between cells and the extracellular matrix.

Immunogen: KLH conjugated synthetic peptide derived from human Endomucin: 181-261/261

Positive control: Expressed in heart, kidney and lung.

Subcellular location: Secreted and Cell membrane. Membrane. Consistently localized to the plasma membrane and less abundantly to Golgi-like perinuclear stacks.

Database links: SwissProt: Q9ULC0 Human

Recommended Dilutions:

IHC-P	1:100-500
IF-tissue	1:100-500

Storage Buffer: 0.01M TBS (pH7.4) with 1% BSA, 0.02% Proclin300 and 50% Glycerol.

Storage Instruction: Shipped at 4℃. Store at -20℃ for one year. Avoid repeated freeze/thaw cycles.

Purity: Protein A affinity purified.

Hangzhou Huaan Biotechnology Co., Ltd.

Orders: 0086-571-88062880

Technical: 0086-571-89986345

Service mail: support@huabio.cn

 华安生物
HUABIO
www.huabio.cn

Applications: WB=Western blot IHC-P=Immunohistochemistry (paraffin) IF-Cell=Immunofluorescence (Cell) IF-Tissue=Immunofluorescence (Tissue) FC=Flow cytometry IP=Immunoprecipitation

Images

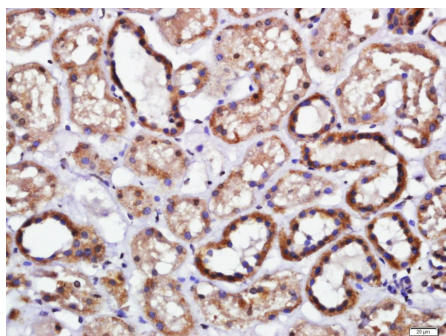


Fig1: Paraformaldehyde-fixed, paraffin embedded (human kidney); Antigen retrieval by boiling in sodium citrate buffer (pH6.0) for 15min; Block endogenous peroxidase by 3% hydrogen peroxide for 20 minutes; Blocking buffer (normal goat serum) at 37°C for 30min; Antibody incubation with (Endomucin) Polyclonal Antibody, Unconjugated (ER1908-09) at 1:400 overnight at 4°C, followed by a conjugated secondary (sp-0023) for 20 minutes and DAB staining.

Note: All products are “FOR RESEARCH USE ONLY AND ARE NOT INTENDED FOR DIAGNOSTIC OR THERAPEUTIC USE”.

Hangzhou Huaan Biotechnology Co., Ltd.

Orders:0086-571-88062880

Technical:0086-571-89986345

Service mail:support@huabio.cn

华安生物
HUABIO
www.huabio.cn

Applications:WB=Western blot IHC-P=Immunohistochemistry (paraffin) IF-Cell=Immunofluorescence (Cell) IF-Tissue=Immunofluorescence (Tissue) FC=Flow cytometry IP=Immunoprecipitation