

Anti-CXCR2 Antibody

ER1906-87



Product Type:	Rabbit polyclonal IgG, primary antibodies
Species reactivity:	Human
Applications:	WB
Molecular Wt:	Predicted band size: 41 kDa

Description:	The protein encoded by this gene is a member of the G-protein-coupled receptor family. This protein is a receptor for interleukin 8 (IL8). It binds to IL8 with high affinity, and transduces the signal through a G-protein-activated second messenger system (Gi/o-coupled). This receptor also binds to chemokine (C-X-C motif) ligand 1 (CXCL1/MGSA), a protein with melanoma growth stimulating activity, and has been shown to be a major component required for serum-dependent melanoma cell growth. In addition, it binds ligands CXCL2, CXCL3, and CXCL5. The angiogenic effects of IL8 in intestinal microvascular endothelial cells are found to be mediated by this receptor. Knockout studies in mice suggested that this receptor controls the positioning of oligodendrocyte precursors in developing spinal cord by arresting their migration. IL8RB, IL8RA, which encodes another high affinity IL8 receptor, and IL8RBP, a pseudogene of IL8RB, form a gene cluster in a region mapped to chromosome 2q33-q36. Mutations in CXCR2 cause hematological traits.
---------------------	--

Immunogen:	Synthetic peptide within human CXCR2 aa 311-360.
-------------------	--

Positive control:	MDA-MB-231 cell lysate, SK-Br-3 cell lysate, T-47D cell lysate, A549 cell lysate, HepG2 cell lysate.
--------------------------	--

Subcellular location:	Cell membrane.
------------------------------	----------------

Database links:	SwissProt: P25025 Human
------------------------	-------------------------

Recommended Dilutions:	
WB	1:5,000

Storage Buffer:	PBS (pH7.4), 0.1% BSA, 40% Glycerol. Preservative: 0.05% Sodium Azide.
------------------------	--

Storage Instruction:	Shipped at 4°C. Store at +4°C short term (1-2 weeks). It is recommended to aliquot into single-use upon delivery. Store at -20°C long term.
-----------------------------	---

Purity:	Immunogen affinity purified.
----------------	------------------------------

Hangzhou Huaan Biotechnology Co., Ltd.

Orders:0086-571-88062880

Technical:0086-571-89986345

Service mail:support@huabio.cn

华安生物
HUABIO
www.huabio.cn

Applications:WB=Western blot IHC-P=Immunohistochemistry (paraffin) IF-Cell=Immunofluorescence (Cell) IF-Tissue=Immunofluorescence (Tissue) FC=Flow cytometry IP=Immunoprecipitation

Images

Fig1: Western blot analysis of CXCR2 on different lysates with Rabbit anti-CXCR2 antibody (ER1906-87) at 1/5,000 dilution.

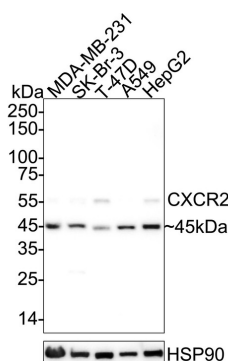
Lane 1: MDA-MB-231 cell lysate

Lane 2: SK-Br-3 cell lysate

Lane 3: T-47D cell lysate

Lane 4: A549 cell lysate

Lane 5: HepG2 cell lysate



Lysates/proteins at 20 µg/Lane.

Predicted band size: 41 kDa

Observed band size: 45 kDa

Exposure time: 59 seconds; ECL: K1801;

4-20% SDS-PAGE gel.

Proteins were transferred to a PVDF membrane and blocked with 5% NFDM/TBST for 1 hour at room temperature. The primary antibody (ER1906-87) at 1/5,000 dilution was used in primary antibody dilution (K1803) at 4°C overnight. Goat Anti-Rabbit IgG - HRP Secondary Antibody (HA1001) at 1/50,000 dilution was used for 1 hour at room temperature.

Note: All products are "FOR RESEARCH USE ONLY AND ARE NOT INTENDED FOR DIAGNOSTIC OR THERAPEUTIC USE".

Background References

1. Korbecki J et al. CXCR2 Receptor: Regulation of Expression, Signal Transduction, and Involvement in Cancer. *Int J Mol Sci.* 2022 Feb
2. Leslie J et al. CXCR2 inhibition enables NASH-HCC immunotherapy. *Gut.* 2022 Apr

Hangzhou Huaan Biotechnology Co., Ltd.

Orders:0086-571-88062880

Technical:0086-571-89986345

Service mail:support@huabio.cn

华安生物
HUABIO
www.huabio.cn

Applications:WB=Western blot IHC-P=Immunohistochemistry (paraffin) IF-Cell=Immunofluorescence (Cell) IF-Tissue=Immunofluorescence (Tissue) FC=Flow cytometry IP=Immunoprecipitation