

Anti-CTLA4 Antibody

ER1906-81



Product Type:	Rabbit polyclonal IgG, primary antibodies
Species reactivity:	Human, Mouse, Rat
Applications:	WB, FC
Molecular Wt:	21 KDa

Description: Inhibitory receptor acting as a major negative regulator of T-cell responses. The affinity of CTLA4 for its natural B7 family ligands, CD80 and CD86, is considerably stronger than the affinity of their cognate stimulatory coreceptor CD28.

Immunogen: KLH conjugated synthetic peptide derived from human CTLA-4/CD152 75-170/223

Positive control: Widely expressed with highest levels in lymphoid tissues. Detected in activated T-cells where expression levels are 30- to 50-fold less than CD28, the stimulatory coreceptor, on the cell surface following activation.

Subcellular location: Cell membrane; Single-pass type I membrane protein. Note=Exists primarily an intracellular antigen whose surface expression is tightly regulated by restricted trafficking to the cell surface and rapid internalisation.

Database links: SwissProt: P16410 Human

Recommended Dilutions:

WB	1:500-2000
FC	1µg/Test

Storage Buffer: 0.01M TBS(pH7.4) with 1% BSA, 0.03% Proclin300 and 50% Glycerol.

Storage Instruction: Store at -20°C for one year. Avoid repeated freeze/thaw cycles. The lyophilized antibody is stable at room temperature for at least one month and for greater than a year when kept at -20°C. When reconstituted in sterile pH 7.4 0.01M PBS or diluent of antibody the antibody is stable for at least two weeks at 2-4°C.

Purity: Protein A affinity purified.

Hangzhou Huaan Biotechnology Co., Ltd.

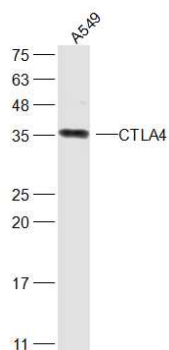
Orders:0086-571-88062880

Technical:0086-571-89986345

Service mail:support@huabio.cn

 华安生物
HUABIO
www.huabio.cn

Images

**Fig1:** Sample:

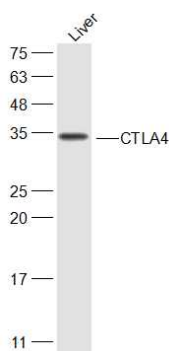
A549(Human) Cell Lysate at 30 ug

Primary: Anti-CTLA4 (ER1906-81) at 1/300 dilution

Secondary: IRDye800CW Goat Anti-Rabbit IgG at 1/20000 dilution

Predicted band size: 21 kD

Observed band size: 35 kD

**Fig2:** Sample:

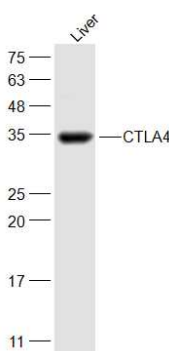
Liver(Mouse) Cell Lysate at 30 ug

Primary: Anti-CTLA4 (ER1906-81) at 1/300 dilution

Secondary: IRDye800CW Goat Anti-Rabbit IgG at 1/20000 dilution

Predicted band size: 21 kD

Observed band size: 35 kD

**Fig3:** Sample:

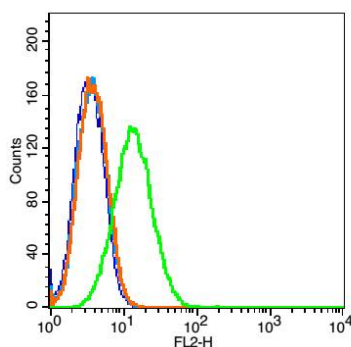
Liver(Rat) Cell Lysate at 30 ug

Primary: Anti-CTLA4 (ER1906-81) at 1/300 dilution

Secondary: IRDye800CW Goat Anti-Rabbit IgG at 1/20000 dilution

Predicted band size: 21 kD

Observed band size: 35 kD

**Fig4:** Blank control: Raji(blue). Primary Antibody: Rabbit Anti-CTLA4 antibody(ER1906-81), Dilution: 5µg in 100 µL 1X PBS containing 0.5% BSA; Isotype Control Antibody: Rabbit IgG (orange), used under the same conditions. Secondary Antibody: Goat anti-rabbit IgG-PE(white blue), Dilution: 1:200 in 1 X PBS containing 0.5% BSA.

Hangzhou Huaan Biotechnology Co., Ltd.

Orders:0086-571-88062880

Technical:0086-571-89986345

Service mail:support@huabio.cn

 华安生物
HUABIO
www.huabio.cn

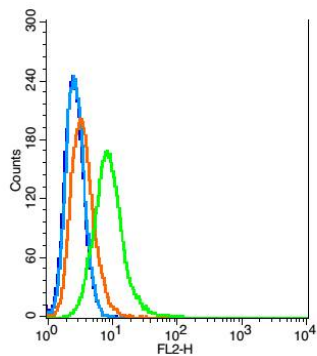


Fig5: Blank control: HeLa(blue), the cells were fixed with 2% paraformaldehyde (10 min)
 Isotype Control Antibody: Rabbit IgG(orange) ;
 Secondary Antibody: Goat anti-rabbit IgG-PE (white blue),
 Dilution: 1:200 in 1 X PBS containing 0.5% BSA ;
 Primary Antibody Dilution: 1 μ g in 100 μ L 1X PBS containing 0.5% BSA(green).

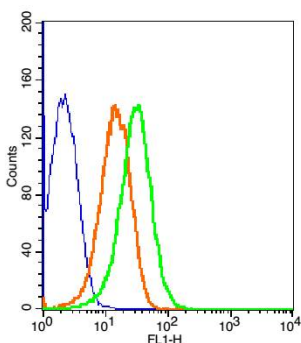


Fig6: Blank control(blue):Mouse Spleen Cells(fixed with 2% paraformaldehyde (10 min)). Primary Antibody: Rabbit Anti-Phospho-c-Fos (Thr325)/FITC Conjugated antibody (ER1906-81 /FITC), Dilution: 1 μ g in 100 μ L 1X PBS containing 0.5% BSA;
 Isotype Control Antibody: Rabbit IgG/FITC(orange) ,used under the same conditions.

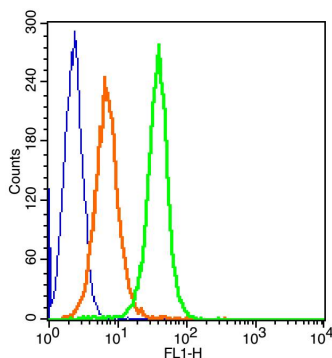


Fig7: Blank control(blue): Molt-4 Cells(fixed with 2% paraformaldehyde (10 min)). Primary Antibody: Rabbit Anti-CTLA4/FITC Conjugated antibody (ER1906-81/FITC), Dilution: 1 μ g in 100 μ L 1X PBS containing 0.5% BSA; Isotype Control Antibody: Rabbit IgG/FITC (orange) ,used under the same conditions.

Note: All products are "FOR RESEARCH USE ONLY AND ARE NOT INTENDED FOR DIAGNOSTIC OR THERAPEUTIC USE".

Hangzhou Huaan Biotechnology Co., Ltd.

Orders:0086-571-88062880

Technical:0086-571-89986345

Service mail:support@huabio.cn

华安生物
HUABIO
www.huabio.cn