

# Anti-Claudin 1 Antibody

## ER1906-37



<b>Product Type:</b>	Rabbit polyclonal IgG, primary antibodies
<b>Species reactivity:</b>	Human, Mouse, Rat
<b>Applications:</b>	WB, IHC-P, IF-Tissue
<b>Molecular Wt:</b>	23 KDa

**Description:** Claudins function as major constituents of the tight junction complexes that regulate the permeability of epithelia. While some claudin family members play essential roles in the formation of impermeable barriers, others mediate the permeability to ions and small molecules. Often, several claudin family members are coexpressed and interact with each other, and this determines the overall permeability. CLDN1 is required to prevent the paracellular diffusion of small molecules through tight junctions in the epidermis and is required for the normal barrier function of the skin. Required for normal water homeostasis and to prevent excessive water loss through the skin, probably via an indirect effect on the expression levels of other proteins, since CLDN1 itself seems to be dispensable for water barrier formation in keratinocyte tight junctions.

**Immunogen:** KLH conjugated synthetic peptide derived from mouse Claudin 1 121-211/211

**Positive control:** Widely expressed, with highest levels in liver and kidney.

**Subcellular location:** Cell junction, tight junction. Cell membrane; Multi-pass membrane protein.

**Database links:** SwissProt: O88551 Mouse

**Recommended Dilutions:**

<b>WB</b>	1:500-2000
<b>IHC-P</b>	1:100-500
<b>IF-tissue</b>	1:100-500

**Storage Buffer:** 0.01M TBS(pH7.4) with 1% BSA, 0.03% Proclin300 and 50% Glycerol.

**Storage Instruction:** Store at -20°C for one year. Avoid repeated freeze/thaw cycles. The lyophilized antibody is stable at room temperature for at least one month and for greater than a year when kept at -20°C. When reconstituted in sterile pH 7.4 0.01M PBS or diluent of antibody the antibody is stable for at least two weeks at 2-4°C.

**Purity:** Protein A affinity purified.

Hangzhou Huaan Biotechnology Co., Ltd.

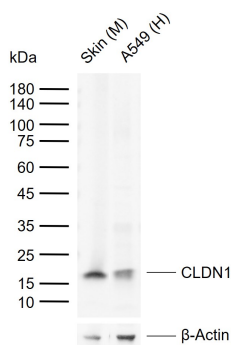
Orders:0086-571-88062880

Technical:0086-571-89986345

Service mail:support@huabio.cn

 华安生物  
HUABIO  
www.huabio.cn

## Images

**Fig1: Sample:**

Lane 1: Mouse Skin tissue lysates

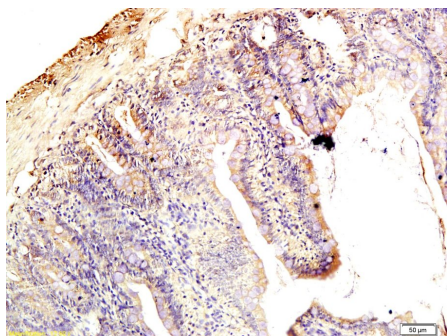
Lane 2: Human A549 cell lysates

Primary: Anti-CLDN1 (ER1906-37) at 1/1000 dilution

Secondary: IRDye800CW Goat Anti-Rabbit IgG at 1/20000 dilution

Predicted band size: 23 kDa

Observed band size: 17 kDa

**Fig2: Tissue/cell: rat intestine tissue; 4% Paraformaldehyde-fixed and paraffin-embedded;**

Antigen retrieval: citrate buffer ( 0.01M, pH 6.0 ), Boiling bathing for 15min; Block endogenous peroxidase by 3% Hydrogen peroxide for 30min; Blocking buffer (normal goat serum,C-0005) at 37°C for 20 min;

Incubation: Anti-Claudin-1 Polyclonal Antibody, Unconjugated(ER1906-37) 1:200, overnight at 4°C, followed by conjugation to the secondary antibody(SP-0023) and DAB(C-0010) staining

**Note:** All products are "FOR RESEARCH USE ONLY AND ARE NOT INTENDED FOR DIAGNOSTIC OR THERAPEUTIC USE".

Hangzhou Huaan Biotechnology Co., Ltd.

Orders:0086-571-88062880

Technical:0086-571-89986345

Service mail:support@huabio.cn

华安生物  
HUABIO  
www.huabio.cn