

Anti-CD86 Antibody

ER1906-01



Product Type:	Rabbit polyclonal IgG, primary antibodies
Species reactivity:	Human, Mouse, Rat
Applications:	WB, IHC-P, IF-Tissue, FC
Molecular Wt:	38 KDa

Description: Receptor involved in the costimulatory signal essential for T-lymphocyte proliferation and interleukin-2 production, by binding CD28 or CTLA-4. May play a critical role in the early events of T-cell activation and costimulation of naive T-cells, such as deciding between immunity and anergy that is made by T-cells within 24 hours after activation. Isoform 2 interferes with the formation of CD86 clusters, and thus acts as a negative regulator of T-cell activation.

Immunogen: KLH conjugated synthetic peptide derived from the middle of rat CD86:140-175/313 <Extracellular>

Positive control: Expressed by activated B-lymphocytes and monocytes.

Subcellular location: Cell membrane; Single-pass type I membrane protein.

Database links: SwissProt: P42081 Human | P42082 Mouse | O35531 Rat

Recommended Dilutions:

WB	1:500-2000
IHC-P	1:100-500
IF-tissue	1:100-500
FC	2µg/Test

Storage Buffer: 0.01M TBS(pH7.4) with 1% BSA, 0.03% Proclin300 and 50% Glycerol.

Storage Instruction: Store at -20℃ for one year. Avoid repeated freeze/thaw cycles. The lyophilized antibody is stable at room temperature for at least one month and for greater than a year when kept at -20℃. When reconstituted in sterile pH 7.4 0.01M PBS or diluent of antibody the antibody is stable for at least two weeks at 2-4℃.

Purity: Protein A affinity purified.

Hangzhou Huaan Biotechnology Co., Ltd.

Orders:0086-571-88062880

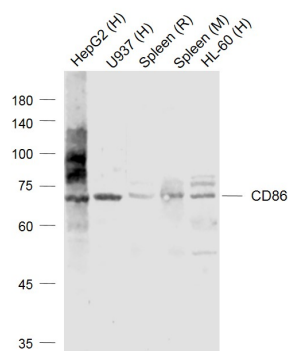
Technical:0086-571-89986345

Service mail:support@huabio.cn

华安生物
HUABIO
www.huabio.cn

Applications:WB=Western blot IHC-P=Immunohistochemistry (paraffin) IF-Cell=Immunofluorescence (Cell) IF-Tissue=Immunofluorescence (Tissue) FC=Flow cytometry IP=Immunoprecipitation

Images

**Fig1:** Sample:

Lane 1: HepG2 (Human) Cell Lysate at 30 ug

Lane 2: U937 (Human) Cell Lysate at 30 ug

Lane 3: Spleen (Rat) Lysate at 40 ug

Lane 4: Spleen (Mouse) Lysate at 40 ug

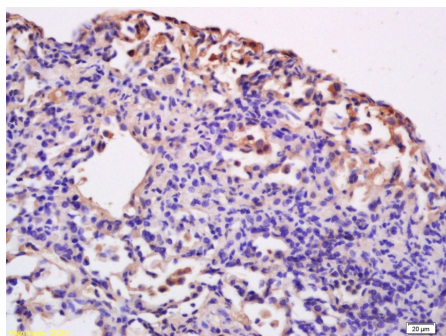
Lane 5: HL-60 (Human) Cell Lysate at 30 ug

Primary: Anti-CD86 (ER1906-01) at 1/1000 dilution

Secondary: IRDye800CW Goat Anti-Rabbit IgG at 1/20000 dilution

Predicted band size: 72-74 kD

Observed band size: 72 kD

**Fig2:** Tissue/cell: rat lung tissue; 4% Paraformaldehyde-fixed and paraffin-embedded;

Antigen retrieval: citrate buffer (0.01M, pH 6.0), Boiling bathing for 15min; Block endogenous peroxidase by 3% Hydrogen peroxide for 30min; Blocking buffer (normal goat serum,C-0005) at 37°C for 20 min;

Incubation: Anti-CD86/B7-2 Polyclonal Antibody, Unconjugated(ER1906-01) 1:200, overnight at 4°C, followed by conjugation to the secondary antibody(SP-0023) and DAB(C-0010) staining

Note: All products are "FOR RESEARCH USE ONLY AND ARE NOT INTENDED FOR DIAGNOSTIC OR THERAPEUTIC USE".

Hangzhou Huaan Biotechnology Co., Ltd.

Orders:0086-571-88062880

Technical:0086-571-89986345

Service mail:support@huabio.cn

华安生物
HUABIO
www.huabio.cn

Applications:WB=Western blot IHC-P=Immunohistochemistry (paraffin) IF-Cell=Immunofluorescence (Cell) IF-Tissue=Immunofluorescence (Tissue) FC=Flow cytometry IP=Immunoprecipitation