

Anti-CD80 Antibody

ER1905-99



Product Type:	Rabbit polyclonal IgG, primary antibodies
Species reactivity:	Mouse, Rat, Human
Applications:	WB, IHC-P, IF-Cell, IF-Tissue
Molecular Wt:	30 KDa

Description: Involved in the costimulatory signal essential for T lymphocytes activation. T-cell proliferation and cytokine production is induced by the binding of CD28 or CTLA-4 to this receptor.

Immunogen: KLH conjugated synthetic peptide derived from rat CD80 251-321/321

Positive control: Expressed on activated B-cells, macrophages and dendritic cells.

Subcellular location: Membrane; Single-pass type I membrane protein.

Database links: SwissProt: G3V671 Rat | P33681 Human | Q00609 Mouse

Recommended Dilutions:

WB	1:500-2000
IHC-P	1:100-500
IF-cell	1:100
IF-tissue	1:100-500: 1:5000-10000

Storage Buffer: 0.01M TBS(pH7.4) with 1% BSA, 0.03% Proclin300 and 50% Glycerol.

Storage Instruction: Store at -20°C for one year. Avoid repeated freeze/thaw cycles. The lyophilized antibody is stable at room temperature for at least one month and for greater than a year when kept at -20°C. When reconstituted in sterile pH 7.4 0.01M PBS or diluent of antibody the antibody is stable for at least two weeks at 2-4°C.

Purity: Protein A affinity purified.

Hangzhou Huaan Biotechnology Co., Ltd.

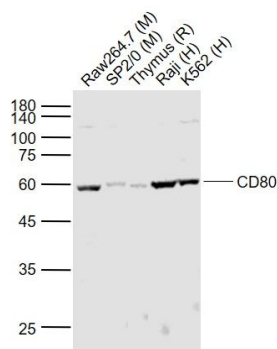
Orders:0086-571-88062880

Technical:0086-571-89986345

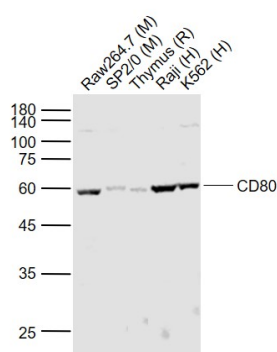
Service mail:support@huabio.cn

 华安生物
HUABIO
www.huabio.cn

Images

**Fig1: Sample:**

Lane 1: Raw264.7 (Mouse) Cell Lysate at 30 ug
 Lane 2: SP2/0 (Mouse) Cell Lysate at 30 ug
 Lane 3: Thymus (Rat) Lysate at 40 ug
 Lane 4: Raji (Human) Cell Lysate at 30 ug
 Lane 5: K562 (Human) Cell Lysate at 30 ug
 Primary: Anti-CD80 (ER1905-99) at 1/1000 dilution
 Secondary: IRDye800CW Goat Anti-Rabbit IgG at 1/20000 dilution
 Predicted band size: 60-65 kD
 Observed band size: 60 kD

**Fig2: Sample:**

Lane 1: Raw264.7 (Mouse) Cell Lysate at 30 ug
 Lane 2: SP2/0 (Mouse) Cell Lysate at 30 ug
 Lane 3: Thymus (Rat) Lysate at 40 ug
 Lane 4: Raji (Human) Cell Lysate at 30 ug
 Lane 5: K562 (Human) Cell Lysate at 30 ug
 Primary: Anti-CD80 (ER1905-99) at 1/1000 dilution
 Secondary: IRDye800CW Goat Anti-Rabbit IgG at 1/20000 dilution
 Predicted band size: 60-65 kD
 Observed band size: 60 kD

Note: All products are "FOR RESEARCH USE ONLY AND ARE NOT INTENDED FOR DIAGNOSTIC OR THERAPEUTIC USE".

Hangzhou Huaan Biotechnology Co., Ltd.

Orders:0086-571-88062880

Technical:0086-571-89986345

Service mail:support@huabio.cn

华安生物
HUABIO
www.huabio.cn