

# Anti-CCDC138 Antibody

## ER1905-57



<b>Product Type:</b>	Rabbit polyclonal IgG, primary antibodies
<b>Species reactivity:</b>	Human
<b>Applications:</b>	WB
<b>Molecular Wt:</b>	76 KDa
<b>Immunogen:</b>	KLH conjugated synthetic peptide derived from Human CCDC138 551-665/665
<b>Database links:</b>	SwissProt: Q96M89 Human
<b>Recommended Dilutions:</b>	
<b>WB</b>	1:500-2000
<b>Storage Buffer:</b>	0.01M TBS(pH7.4) with 1% BSA, 0.03% Proclin300 and 50% Glycerol.
<b>Storage Instruction:</b>	Store at -20°C for one year. Avoid repeated freeze/thaw cycles. The lyophilized antibody is stable at room temperature for at least one month and for greater than a year when kept at -20°C. When reconstituted in sterile pH 7.4 0.01M PBS or diluent of antibody the antibody is stable for at least two weeks at 2-4°C.
<b>Purity:</b>	Protein A affinity purified.

Hangzhou Huaan Biotechnology Co., Ltd.

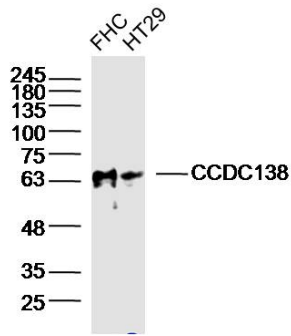
Orders:0086-571-88062880

Technical:0086-571-89986345

Service mail:support@huabio.cn

 华安生物  
HUABIO  
www.huabio.cn

## Images

**Fig1: Sample:**

FHC(human) Cell Lysate at 40 ug

HT29(human) Cell Lysate at 40 ug

Primary: Anti-CCDC138(ER1905-57) at 1/300 dilution

Secondary: IRDye800CW Goat Anti-Rabbit IgG at 1/20000 dilution

Predicted band size: 76/66kD

Observed band size: 66kD

**Note:** All products are "FOR RESEARCH USE ONLY AND ARE NOT INTENDED FOR DIAGNOSTIC OR THERAPEUTIC USE".

Hangzhou Huaan Biotechnology Co., Ltd.

Orders:0086-571-88062880

Technical:0086-571-89986345

Service mail:support@huabio.cn

华安生物  
HUABIO  
www.huabio.cn