

Anti-C6orf15 Antibody

ER1905-05



Product Type:	Rabbit polyclonal IgG, primary antibodies
Species reactivity:	Human
Applications:	WB
Molecular Wt:	32 KDa
Immunogen:	KLH conjugated synthetic peptide derived from human C6orf15 21-120/325
Positive control:	Expressed in skin and tonsils.
Subcellular location:	Secreted, extracellular space, extracellular matrix (By similarity).
Database links:	SwissProt: Q6UXA7 Human
Recommended Dilutions:	
WB	1:500-2000
Storage Buffer:	0.01M TBS(pH7.4) with 1% BSA, 0.03% Proclin300 and 50% Glycerol.
Storage Instruction:	Store at -20°C for one year. Avoid repeated freeze/thaw cycles. The lyophilized antibody is stable at room temperature for at least one month and for greater than a year when kept at -20°C. When reconstituted in sterile pH 7.4 0.01M PBS or diluent of antibody the antibody is stable for at least two weeks at 2-4°C.
Purity:	Protein A affinity purified.

Hangzhou Huaan Biotechnology Co., Ltd.

Orders:0086-571-88062880

Technical:0086-571-89986345

Service mail:support@huabio.cn

 华安生物
HUABIO
www.huabio.cn

Images

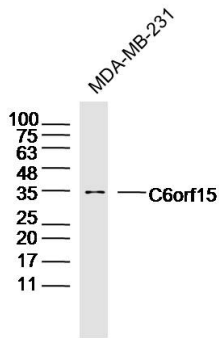


Fig1: Sample: MDA-MB-231 Cell (Human) Lysate at 30 ug
Primary: Anti-C6orf15 (ER1905-05) at 1/300 dilution
Secondary: IRDye800CW Goat Anti-Rabbit IgG at 1/20000 dilution
Predicted band size: 32kD
Observed band size: 34kD

Note: All products are "FOR RESEARCH USE ONLY AND ARE NOT INTENDED FOR DIAGNOSTIC OR THERAPEUTIC USE".

Hangzhou Huaan Biotechnology Co., Ltd.

Orders: 0086-571-88062880

Technical: 0086-571-89986345

Service mail: support@huabio.cn

华安生物
HUABIO
www.huabio.cn