

Anti-C1orf43 Antibody

ER1904-64



Product Type: Rabbit polyclonal IgG, primary antibodies

Species reactivity: Human

Applications: WB

Molecular Wt: 29 KDa

Immunogen: KLH conjugated synthetic peptide derived from human C1orf43 11-100/253

Subcellular location: Membrane; Single-pass membrane protein (Potential).

Database links: SwissProt: Q9BWL3 Human

Recommended Dilutions:

WB 1:500-2000

Storage Buffer: 0.01M TBS(pH7.4) with 1% BSA, 0.03% Proclin300 and 50% Glycerol.

Storage Instruction: Store at -20°C for one year. Avoid repeated freeze/thaw cycles. The lyophilized antibody is stable at room temperature for at least one month and for greater than a year when kept at -20°C. When reconstituted in sterile pH 7.4 0.01M PBS or diluent of antibody the antibody is stable for at least two weeks at 2-4°C.

Purity: Protein A affinity purified.

Hangzhou Huaan Biotechnology Co., Ltd.

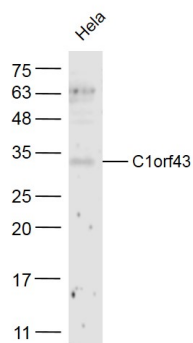
Orders:0086-571-88062880

Technical:0086-571-89986345

Service mail:support@huabio.cn

 华安生物
HUABIO
www.huabio.cn

Images

**Fig1: Sample:**

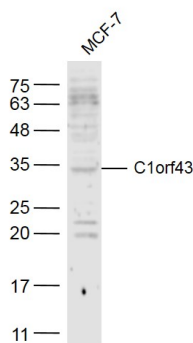
HeLa(Human) Cell Lysate at 40 ug

Primary: Anti- C1orf43 (ER1904-64) at 1/300 dilution

Secondary: IRDye800CW Goat Anti-Rabbit IgG at 1/20000 dilution

Predicted band size: 29 kD

Observed band size: 29 kD

**Fig2: Sample:**

MCF-7(Human) Cell Lysate at 40 ug

Primary: Anti- C1orf43 (ER1904-64) at 1/300 dilution

Secondary: IRDye800CW Goat Anti-Rabbit IgG at 1/20000 dilution

Predicted band size: 29 kD

Observed band size: 29 kD

Note: All products are "FOR RESEARCH USE ONLY AND ARE NOT INTENDED FOR DIAGNOSTIC OR THERAPEUTIC USE".

Hangzhou Huaan Biotechnology Co., Ltd.

Orders:0086-571-88062880

Technical:0086-571-89986345

Service mail:support@huabio.cn

华安生物
HUABIO
www.huabio.cn