

Anti-MDM2 Antibody

ER1902-14



Product Type:	Rabbit polyclonal IgG, primary antibodies
Species reactivity:	Human
Applications:	WB, IF-Cell, IHC-P, FC
Molecular Wt:	Predicted band size: 55 kDa

Description: This gene encodes a nuclear-localized E3 ubiquitin ligase. The encoded protein can promote tumor formation by targeting tumor suppressor proteins, such as p53, for proteasomal degradation. This gene is itself transcriptionally-regulated by p53. Overexpression or amplification of this locus is detected in a variety of different cancers. There is a pseudogene for this gene on chromosome 2. Alternative splicing results in a multitude of transcript variants, many of which may be expressed only in tumor cells.

Immunogen: Synthetic peptide within Human MDM2 aa 1-50 / 491.

Positive control: Human lung tissue lysate, Daudi cell lysate, HepG2, JAR, MCF-7, human thyroid tissue, human skin tissue, human breast carcinoma tissue, human small intestine tissue, human pancreas tissue, Daudi.

Subcellular location: Nucleoplasm, nucleolus, cytoplasm.

Database links: SwissProt: Q00987 Human

Recommended Dilutions:

WB	1:500-1:1,000
IF-Cell	1:50-1:200
IHC-P	1:500-1:1,000
FC	1:50-1:100

Storage Buffer: 1*PBS (pH7.4), 0.2% BSA, 50% Glycerol. Preservative: 0.05% Sodium Azide.

Storage Instruction: Shipped at 4°C. Store at +4°C short term (1-2 weeks). It is recommended to aliquot into single-use upon delivery. Store at -20°C long term.

Purity: Protein A affinity purified.

Hangzhou Huaan Biotechnology Co., Ltd.

Orders: 0086-571-88062880

Technical: 0086-571-89986345

Service mail: support@huabio.cn

华安生物
HUABIO
www.huabio.cn

Applications: WB=Western blot IHC-P=Immunohistochemistry (paraffin) IF-Cell=Immunofluorescence (Cell) IF-Tissue=Immunofluorescence (Tissue) FC=Flow cytometry IP=Immunoprecipitation

Images

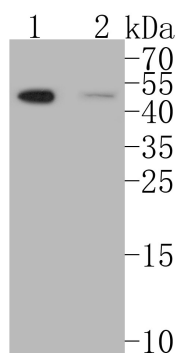


Fig1: Western blot analysis of MDM2 on different lysates. Proteins were transferred to a PVDF membrane and blocked with 5% BSA in PBS for 1 hour at room temperature. The primary antibody (ER1902-14, 1/500) was used in 5% BSA at room temperature for 2 hours. Goat Anti-Rabbit IgG - HRP Secondary Antibody (HA1001) at 1:5,000 dilution was used for 1 hour at room temperature.

Positive control:

Lane 1: human lung tissue lysate

Lane 2: Daudi cell lysate

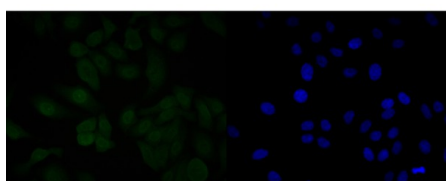


Fig2: ICC staining of MDM2 in HepG2 cells (green). Formalin fixed cells were permeabilized with 0.1% Triton X-100 in TBS for 10 minutes at room temperature and blocked with 1% Blocker BSA for 15 minutes at room temperature. Cells were probed with the primary antibody (ER1902-14, 1/200) for 1 hour at room temperature, washed with PBS. Alexa Fluor®488 Goat anti-Rabbit IgG was used as the secondary antibody at 1/1,000 dilution. The nuclear counter stain is DAPI (blue).

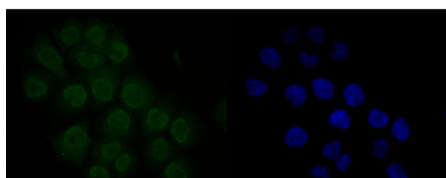


Fig3: ICC staining of MDM2 in JAR cells (green). Formalin fixed cells were permeabilized with 0.1% Triton X-100 in TBS for 10 minutes at room temperature and blocked with 1% Blocker BSA for 15 minutes at room temperature. Cells were probed with the primary antibody (ER1902-14, 1/200) for 1 hour at room temperature, washed with PBS. Alexa Fluor®488 Goat anti-Rabbit IgG was used as the secondary antibody at 1/1,000 dilution. The nuclear counter stain is DAPI (blue).

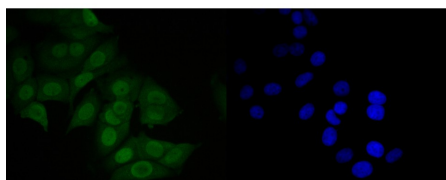


Fig4: ICC staining of MDM2 in MCF-7 cells (green). Formalin fixed cells were permeabilized with 0.1% Triton X-100 in TBS for 10 minutes at room temperature and blocked with 1% Blocker BSA for 15 minutes at room temperature. Cells were probed with the primary antibody (ER1902-14, 1/100) for 1 hour at room temperature, washed with PBS. Alexa Fluor®488 Goat anti-Rabbit IgG was used as the secondary antibody at 1/1,000 dilution. The nuclear counter stain is DAPI (blue).

Hangzhou Huaan Biotechnology Co., Ltd.

Orders: 0086-571-88062880

Technical: 0086-571-89986345

Service mail: support@huabio.cn

华安生物
HUABIO
www.huabio.cn

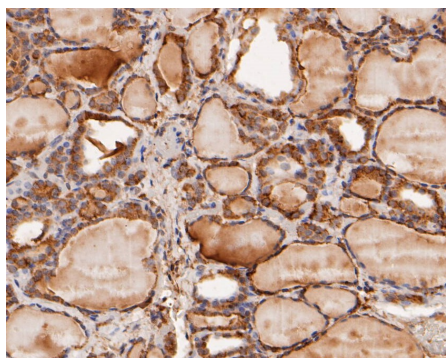


Fig5: Immunohistochemical analysis of paraffin-embedded human thyroid tissue using anti-MDM2 antibody. The section was pre-treated using heat mediated antigen retrieval with sodium citrate buffer (pH 6.0) (high pressure) for 2 minutes. The tissues were blocked in 5% BSA for 30 minutes at room temperature, washed with ddH₂O and PBS, and then probed with the primary antibody (ER1902-14, 1/1,000) for 30 minutes at room temperature. The detection was performed using an HRP conjugated compact polymer system. DAB was used as the chromogen. Tissues were counterstained with hematoxylin and mounted with DPX.

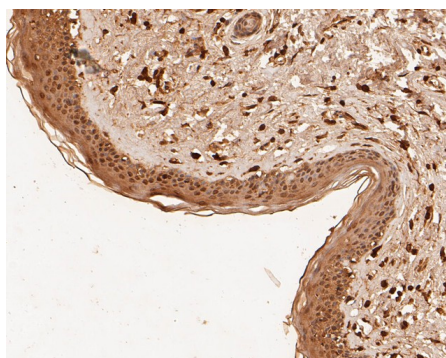


Fig6: Immunohistochemical analysis of paraffin-embedded human skin tissue using anti-MDM2 antibody. The section was pre-treated using heat mediated antigen retrieval with sodium citrate buffer (pH 6.0) (high pressure) for 2 minutes. The tissues were blocked in 5% BSA for 30 minutes at room temperature, washed with ddH₂O and PBS, and then probed with the primary antibody (ER1902-14, 1/500) for 30 minutes at room temperature. The detection was performed using an HRP conjugated compact polymer system. DAB was used as the chromogen. Tissues were counterstained with hematoxylin and mounted with DPX.

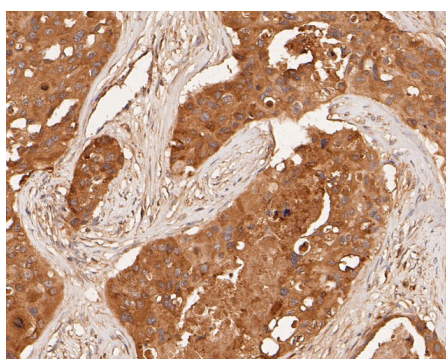


Fig7: Immunohistochemical analysis of paraffin-embedded human breast carcinoma tissue using anti-MDM2 antibody. The section was pre-treated using heat mediated antigen retrieval with sodium citrate buffer (pH 6.0) (high pressure) for 2 minutes. The tissues were blocked in 5% BSA for 30 minutes at room temperature, washed with ddH₂O and PBS, and then probed with the primary antibody (ER1902-14, 1/1,000) for 30 minutes at room temperature. The detection was performed using an HRP conjugated compact polymer system. DAB was used as the chromogen. Tissues were counterstained with hematoxylin and mounted with DPX.

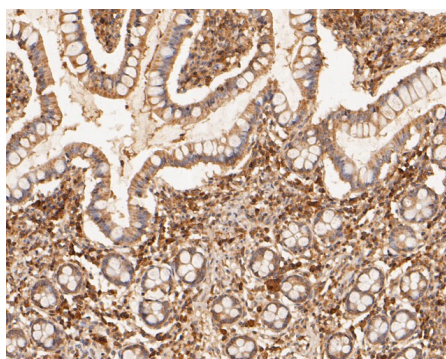


Fig8: Immunohistochemical analysis of paraffin-embedded human small intestine tissue using anti-MDM2 antibody. The section was pre-treated using heat mediated antigen retrieval with sodium citrate buffer (pH 6.0) (high pressure) for 2 minutes. The tissues were blocked in 5% BSA for 30 minutes at room temperature, washed with ddH₂O and PBS, and then probed with the primary antibody (ER1902-14, 1/1,000) for 30 minutes at room temperature. The detection was performed using an HRP conjugated compact polymer system. DAB was used as the chromogen. Tissues were counterstained with hematoxylin and mounted with DPX.

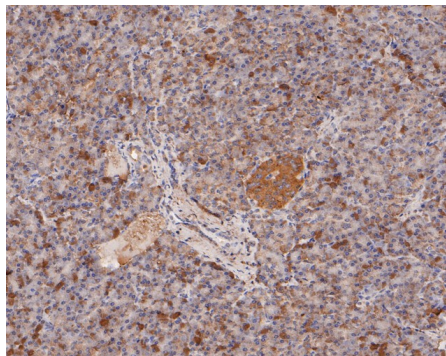


Fig9: Immunohistochemical analysis of paraffin-embedded human pancreas tissue using anti-MDM2 antibody. The section was pre-treated using heat mediated antigen retrieval with sodium citrate buffer (pH 6.0) (high pressure) for 2 minutes. The tissues were blocked in 5% BSA for 30 minutes at room temperature, washed with ddH₂O and PBS, and then probed with the primary antibody (ER1902-14, 1/1,000) for 30 minutes at room temperature. The detection was performed using an HRP conjugated compact polymer system. DAB was used as the chromogen. Tissues were counterstained with hematoxylin and mounted with DPX.

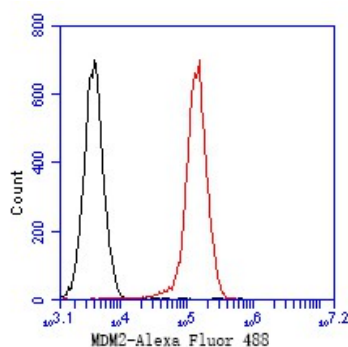


Fig10: Flow cytometric analysis of MDM2 was done on Daudi cells. The cells were fixed, permeabilized and stained with the primary antibody (ER1902-14, 1/50) (red). After incubation of the primary antibody at room temperature for an hour, the cells were stained with a Alexa Fluor 488-conjugated Goat anti-Rabbit IgG Secondary antibody at 1/1000 dilution for 30 minutes. Unlabelled sample was used as a control (cells without incubation with primary antibody; black).

Note: All products are "FOR RESEARCH USE ONLY AND ARE NOT INTENDED FOR DIAGNOSTIC OR THERAPEUTIC USE".

Background References

1. Qin JJ. et. al. Natural products targeting the p53-MDM2 pathway and mutant p53: Recent advances and implications in cancer medicine. *Genes Dis.* 2018 Jul 20;5(3):204-219.
2. Wienken M. et. al. Mdm2 as a chromatin modifier. *J Mol Cell Biol.* 2017 Feb 1;9(1):74-80.

Hangzhou Huaan Biotechnology Co., Ltd.

Orders:0086-571-88062880

Technical:0086-571-89986345

Service mail:support@huabio.cn

华安生物
HUABIO
www.huabio.cn

Applications:WB=Western blot IHC-P=Immunohistochemistry (paraffin) IF-Cell=Immunofluorescence (Cell) IF-Tissue=Immunofluorescence (Tissue) FC=Flow cytometry IP=Immunoprecipitation