

Anti-SEL1L Antibody

ER1803-69



Product Type:	Rabbit polyclonal IgG, primary antibodies
Species reactivity:	Zebrafish
Applications:	WB, IF-Tissue, IHC-P
Molecular Wt:	Predicted band size: 86 kDa

Description: Protein sel-1 homolog 1 is a protein that in humans is encoded by the SEL1L gene. May play a role in Notch signaling. May be involved in the endoplasmic reticulum quality control (ERQC) system also called ER-associated degradation (ERAD) involved in ubiquitin-dependent degradation of misfolded endoplasmic reticulum proteins. In mammals, the most well-characterized ERAD machinery is the highly conserved complex of suppressor-enhancer of lin-12-like and hydroxymethylglutaryl-CoA reductase degradation protein 1 (SEL1L-HRD1), which consists of the E3 ubiquitin ligase HRD1 and its adaptor protein SEL1Lc. The Sel1L-deficient experimental model of central diabetes insipidus is unlikely to be observed in humans, as Sel1L loss is embryonically lethal. Three-week-old mice with Sel1L deficiency specifically in AVP neurons (Sel1LAVP mice) lacked AVP-positive transport vesicles in axons, a phenotype that explains the development of the central diabetes insipidus phenotype in these mice.

Immunogen: Recombinant protein within zebrafish SEL1L aa 109-281 / 776.

Positive control: Zebrafish lysate, Zebrafish.

Subcellular location: Cytoplasm.

Database links: SwissProt: Q5RIK6 Zebrafish

Recommended Dilutions:

WB	1:500
IF-Tissue	1:50-1:200
IHC-P	1:200

Storage Buffer: 1*PBS (pH7.4), 0.2% BSA, 50% Glycerol. Preservative: 0.05% Sodium Azide.

Storage Instruction: Shipped at 4°C. Store at +4°C short term (1-2 weeks). It is recommended to aliquot into single-use upon delivery. Store at -20°C long term.

Purity: Immunogen affinity purified.

Hangzhou Huaan Biotechnology Co., Ltd.

Orders:0086-571-88062880

Technical:0086-571-89986345

Service mail:support@huabio.cn

 华安生物
HUABIO
www.huabio.cn

Images

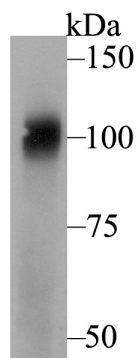


Fig1: Western blot analysis of SeL1L on Zebrafish lysate. Proteins were transferred to a PVDF membrane and blocked with 5% BSA in PBS for 1 hour at room temperature. The primary antibody was used at a 1/500 dilution in 5% BSA at room temperature for 2 hours. Goat Anti-Rabbit IgG - HRP Secondary Antibody (HA1001) at 1:5,000 dilution was used for 1 hour at room temperature.

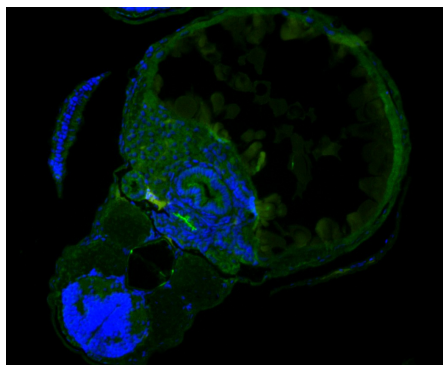


Fig2: Immunofluorescence staining of paraffin-embedded zebrafish using anti-SEL1L rabbit polyclonal antibody. The section was pre-treated using heat mediated antigen retrieval with Tris-EDTA buffer (pH 9.0) for 20 minutes. The tissues were blocked in 10% negative goat serum for 1 hour at room temperature, washed with PBS, and then probed with the antibody (ER1803-69) at 1/50 dilution for 10 hours at 4°C and detected using Alexa Fluor™ 488 conjugate-Goat anti-Rabbit IgG (H+L) Secondary Antibody at a dilution of 1:500 for 1 hour at room temperature.

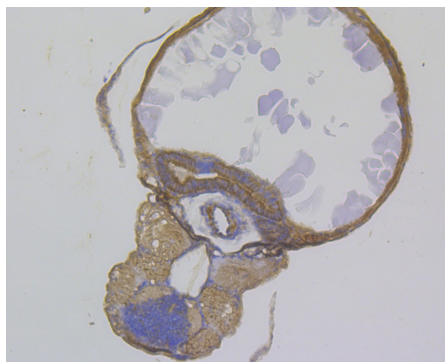


Fig3: Immunohistochemical analysis of paraffin-embedded zebrafish tissue using anti-SeL1L antibody. The section was pre-treated using heat mediated antigen retrieval with Tris-EDTA buffer (pH 8.0-8.4) for 20 minutes. The tissues were blocked in 5% BSA for 30 minutes at room temperature, washed with ddH₂O and PBS, and then probed with the antibody (ER1803-69) at 1/100 dilution, for 30 minutes at room temperature and detected using an HRP conjugated compact polymer system. DAB was used as the chromogen. Counter stained with hematoxylin and mounted with DPX.

Note: All products are "FOR RESEARCH USE ONLY AND ARE NOT INTENDED FOR DIAGNOSTIC OR THERAPEUTIC USE".

Background References

1. Glaeser K et al. ERAD-dependent control of the Wnt secretory factor Evi. *EMBO J* 37:4 (2018).
2. Kim GH et al. Hypothalamic ER-associated degradation regulates POMC maturation, feeding, and age-associated obesity. *J Clin Invest* 128:1125-1140 (2018).

Hangzhou Huaan Biotechnology Co., Ltd.

Orders:0086-571-88062880

Technical:0086-571-89986345

Service mail:support@huabio.cn

华安生物
HUABIO
www.huabio.cn