

Anti-CD40 Antibody

ER1803-54



Product Type:	Rabbit polyclonal IgG, primary antibodies
Species reactivity:	Human, Rat, Mouse
Applications:	WB, IF-Cell, IHC-P, FC
Molecular Wt:	Predicted band size: 31 kDa

Description: Resting B cells can be activated and clonally expanded into antibody-producing cells in response to a combination of cell contact and soluble signals provided by primed helper T (Th) cells. A receptor ligand pair central to the transmission of this signal is CD40, expressed on the surface of B cells, together with CD40L, expressed on activated T cells. In the presence of such stimulus, IL-4 and IL-13 are capable of triggering immunoglobulin class switching and secretion of IgE. B cells are sensitive to these cytokines only subsequent to CD40/CD40L-driven DNA synthesis. A downstream mediator of the CD40 signaling pathway, designated CRAF, is a member of an expanding family of proteins that contain a conserved cysteine- and histidine-rich RING finger motif.

Immunogen: Recombinant protein within Human CD40 aa 1-213 / 277.

Positive control: Daudi cell lysates, SiHa, rat spleen tissue, human tonsil tissue.

Subcellular location: Plasma membrane. Secreted.

Database links: SwissProt: P25942 Human | P27512 Mouse
Entrez Gene: 171369 Rat

Recommended Dilutions:

WB	1:500-1:1,000
IF-Cell	1:50-1:200
IHC-P	1:50 -1:200
FC	1:50-1:100

Storage Buffer: 1*PBS (pH7.4), 0.2% BSA, 50% Glycerol. Preservative: 0.05% Sodium Azide.

Storage Instruction: Shipped at 4°C. Store at +4°C short term (1-2 weeks). It is recommended to aliquot into single-use upon delivery. Store at -20°C long term.

Purity: Immunogen affinity purified.

Hangzhou Huaan Biotechnology Co., Ltd.

Orders:0086-571-88062880

Technical:0086-571-89986345

Service mail:support@huabio.cn

华安生物
HUABIO
www.huabio.cn

Applications:WB=Western blot IHC-P=Immunohistochemistry (paraffin) IF-Cell=Immunofluorescence (Cell) IF-Tissue=Immunofluorescence (Tissue) FC=Flow cytometry IP=Immunoprecipitation

Images

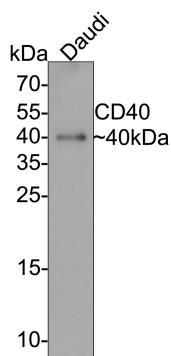


Fig1: Western blot analysis of CD40 on Daudi cell lysates with Rabbit anti-CD40 antibody (ER1803-54) at 1/2,000 dilution.

Lysates/proteins at 10 µg/Lane.

Predicted band size: 31 kDa

Observed band size: 40 kDa

Exposure time: 1 minute;

15% SDS-PAGE gel.

Proteins were transferred to a PVDF membrane and blocked with 5% NFDM/TBST for 1 hour at room temperature. The primary antibody (ER1803-54) at 1/2,000 dilution was used in 5% NFDM/TBST at room temperature for 2 hours. Goat Anti-Rabbit IgG - HRP Secondary Antibody (HA1001) at 1:300,000 dilution was used for 1 hour at room temperature.

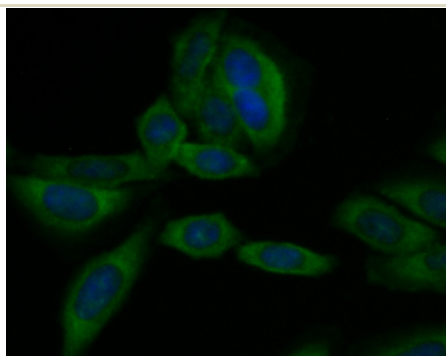


Fig2: ICC staining CD40 in SiHa cells (green). The nuclear counter stain is DAPI (blue). Cells were fixed in paraformaldehyde, permeabilised with 0.25% Triton X100/PBS.

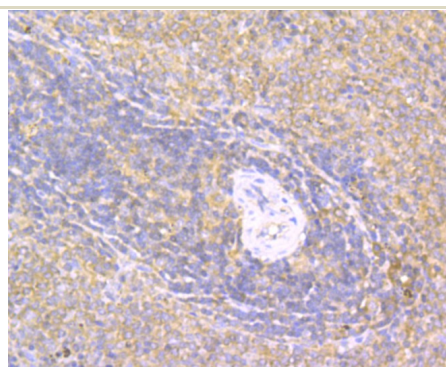


Fig3: Immunohistochemical analysis of paraffin-embedded rat spleen tissue using anti-CD40 antibody. Counter stained with hematoxylin.

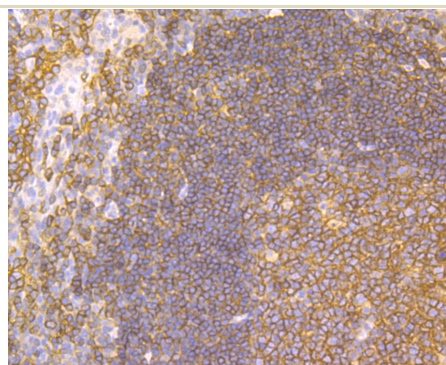


Fig4: Immunohistochemical analysis of paraffin-embedded human tonsil tissue using anti-CD40 antibody. Counter stained with hematoxylin.

Hangzhou Huaan Biotechnology Co., Ltd.

Orders:0086-571-88062880

Technical:0086-571-89986345

Service mail:support@huabio.cn

华安生物
HUABIO
www.huabio.cn

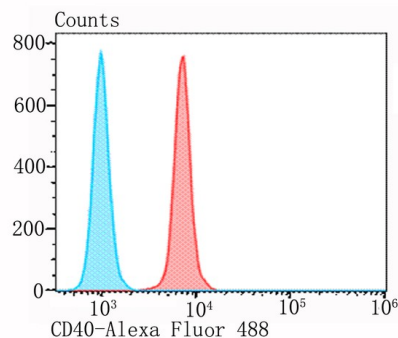


Fig5: Flow cytometric analysis of MG-63 cells with CD40 antibody at 1/100 dilution (red) compared with an unlabelled control (cells without incubation with primary antibody; blue). Alexa Fluor 488-conjugated goat anti-rabbit IgG was used as the secondary antibody.

Note: All products are “FOR RESEARCH USE ONLY AND ARE NOT INTENDED FOR DIAGNOSTIC OR THERAPEUTIC USE”.

Background References

1. Contin C et al. Membrane-anchored CD40 is processed by the tumor necrosis factor- α -converting enzyme. Implications for CD40 signaling. J Biol Chem 278: 32801-32809(2013).
2. Li G et al. 2013. Human genetics in rheumatoid arthritis guides a high-throughput drug screen of the CD40 signaling pathway. PLoS Genet 9: e1003487(2013).

Hangzhou Huaan Biotechnology Co., Ltd.

Orders:0086-571-88062880

Technical:0086-571-89986345

Service mail:support@huabio.cn

华安生物
HUABIO
www.huabio.cn

Applications:WB=Western blot IHC-P=Immunohistochemistry (paraffin) IF-Cell=Immunofluorescence (Cell) IF-Tissue=Immunofluorescence (Tissue) FC=Flow cytometry IP=Immunoprecipitation