

Anti-LAMP2a Antibody

ER1802-99



Product Type:	Rabbit polyclonal IgG, primary antibodies
Species reactivity:	Human, Mouse
Applications:	WB, IHC-P
Molecular Wt:	Predicted band size: 45 kDa

Description: Lysosome-associated membrane proteins (LAMP) are glycosylated type I membrane proteins that play a role in the biogenesis of the pigment melanin. LAMP-1 (also designated CD107A) and LAMP-2 (also designated CD107B) are involved in a variety of functions, including cellular adhesion, and are thought to participate in the process of tumor invasion and metastasis. Newly synthesized LAMP-1 and LAMP-2 proteins are sorted at the trans Golgi network and are transported intracellularly via a pathway that is distinct from the clathrin-coated vesicles used for the mannose-6 phosphate receptor. LAMP-1 is expressed on the surface of thrombin-activated but not resting platelets, and it is thought to be involved in the adhesive, prothrombic properties of these cells. Both LAMP-1 and LAMP-2 are involved in maintaining lysosome acidity and protecting the lysosomal membranes from autodigestion, and their expression is increased in patients with lysosomal storage disorders.

Immunogen: Synthetic peptide within C-terminal human LAMP2a.

Positive control: Mouse placenta tissue, human prostate tissue, human kidney tissue, human placenta tissue.

Subcellular location: Plasma membrane. Endosome. Lysosome.

Database links: SwissProt: P13473 Human

Recommended Dilutions:

WB	1:500
IHC-P	1:50-1:200

Storage Buffer: 1*PBS (pH7.4), 0.2% BSA, 50% Glycerol. Preservative: 0.05% Sodium Azide.

Storage Instruction: Shipped at 4°C. Store at +4°C short term (1-2 weeks). It is recommended to aliquot into single-use upon delivery. Store at -20°C long term.

Purity: Immunogen affinity purified.

Hangzhou Huaan Biotechnology Co., Ltd.

Orders:0086-571-88062880

Technical:0086-571-89986345

Service mail:support@huabio.cn

 华安生物
HUABIO
www.huabio.cn

Images

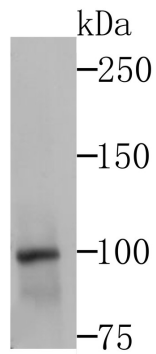


Fig1: Western blot analysis of LAMP2a on mouse placenta tissue lysates using anti-LAMP2a antibody at 1/1,000 dilution.

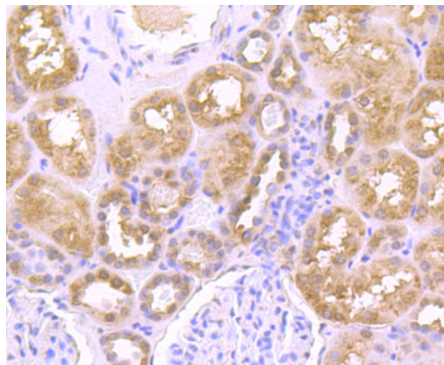


Fig2: Immunohistochemical analysis of paraffin-embedded human kidney tissue using anti-LAMP2a antibody. Counter stained with hematoxylin.

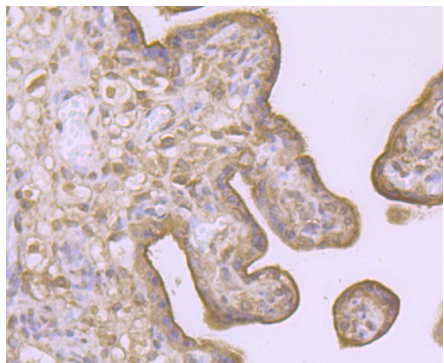


Fig3: Immunohistochemical analysis of paraffin-embedded human placenta tissue using anti-LAMP2a antibody. Counter stained with hematoxylin.

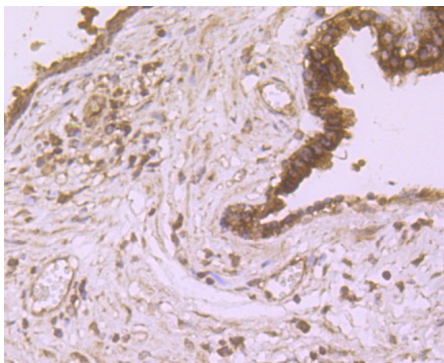


Fig4: Immunohistochemical analysis of paraffin-embedded human prostate tissue using anti-LAMP2a antibody. Counter stained with hematoxylin.

Hangzhou Huaan Biotechnology Co., Ltd.

Orders:0086-571-88062880

Technical:0086-571-89986345

Service mail:support@huabio.cn

华安生物
HUABIO
www.huabio.cn

Note: All products are "FOR RESEARCH USE ONLY AND ARE NOT INTENDED FOR DIAGNOSTIC OR THERAPEUTIC USE".

Hangzhou Huaan Biotechnology Co., Ltd.

Orders:0086-571-88062880

Technical:0086-571-89986345

Service mail:support@huabio.cn

