

Anti-Fibulin 5 Antibody

ER1802-95



Product Type:	Rabbit polyclonal IgG, primary antibodies
Species reactivity:	Human, Mouse, Rat
Applications:	WB, IF-Cell, IHC-P, FC
Molecular Wt:	50 kDa

Description: Fibulin proteins contribute to normal development of elastic fiber systems in various types of organs that require elasticity, such as vasculature, lung and skin. Fibulin-5 (EVEC, UP50, DANCE) is an integrin-binding extracellular matrix protein that mediates endothelial cell adhesion. Fibulin-5 is also a calcium-dependent elastin-binding protein that scaffolds cells to elastic fibers, thereby preventing elastinopathy in the skin, lung, and vasculature. The Arg-Gly-Asp (RGD) motif in Fibulin-5 interacts with cell surface integrins $\alpha v\beta 3$, $\alpha v\beta 5$ and $\alpha 9\beta 1$, serves as an anchorage for elastic fibers to cells, and promotes organization of elastic fibers. The human Fibulin-5 gene maps to chromosome 14q32.12 and encodes a 488 amino acid protein.

Immunogen: Recombinant protein within Human Fibulin aa 203-378 / 448.

Positive control: Human skin tissue, JAR, SiHa, SKOV-3, rat testis tissue, mouse ovary tissue, Hela.

Subcellular location: Extracellular matrix. Secreted.

Database links: SwissProt: Q9UBX5 Human | Q9WWH9 Mouse | Q9WWH8 Rat

Recommended Dilutions:

WB	1:1,000-1:2,000
IF-Cell	1:200
IHC-P	1:50-1:200
FC	1:50-1:100

Storage Buffer: 1*PBS (pH7.4), 0.2% BSA, 50% Glycerol. Preservative: 0.05% Sodium Azide.

Storage Instruction: Shipped at 4°C. Store at +4°C short term (1-2 weeks). It is recommended to aliquot into single-use upon delivery. Store at -20°C long term.

Purity: Immunogen affinity purified.

Hangzhou Huaan Biotechnology Co., Ltd.

Orders:0086-571-88062880

Technical:0086-571-89986345

Service mail:support@huabio.cn

 华安生物
HUABIO
www.huabio.cn

Images

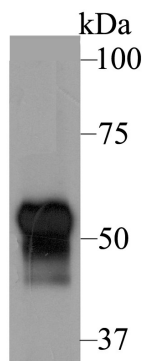


Fig1: Western blot analysis of Fibulin 5 on human skin tissue lysate using anti-Fibulin 5 antibody at 1/1,000 dilution.

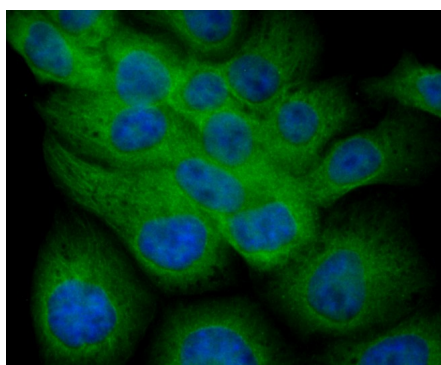


Fig2: ICC staining Fibulin 5 in JAR cells (green). The nuclear counter stain is DAPI (blue). Cells were fixed in paraformaldehyde, permeabilised with 0.25% Triton X100/PBS.

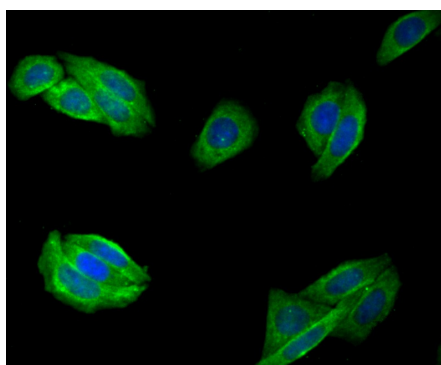


Fig3: ICC staining Fibulin 5 in SiHa cells (green). The nuclear counter stain is DAPI (blue). Cells were fixed in paraformaldehyde, permeabilised with 0.25% Triton X100/PBS.

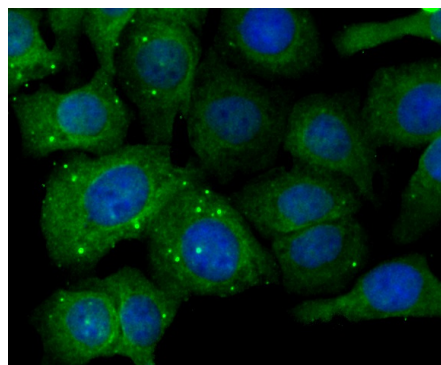


Fig4: ICC staining Fibulin 5 in SKOV-3 cells (green). The nuclear counter stain is DAPI (blue). Cells were fixed in paraformaldehyde, permeabilised with 0.25% Triton X100/PBS.

Hangzhou Huaan Biotechnology Co., Ltd.

Orders:0086-571-88062880

Technical:0086-571-89986345

Service mail:support@huabio.cn

华安生物
HUABIO
www.huabio.cn

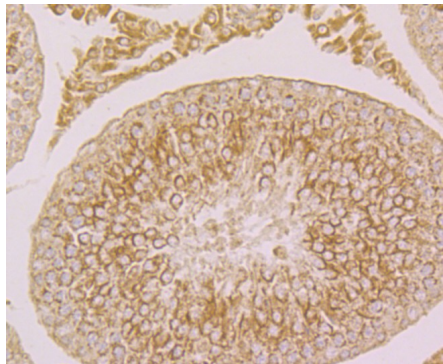


Fig5: Immunohistochemical analysis of paraffin-embedded rat testis tissue using anti-Fibulin 5 antibody. Counter stained with hematoxylin.

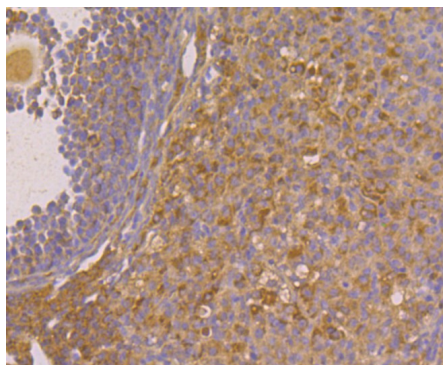


Fig6: Immunohistochemical analysis of paraffin-embedded mouse ovary tissue using anti-Fibulin 5 antibody. Counter stained with hematoxylin.

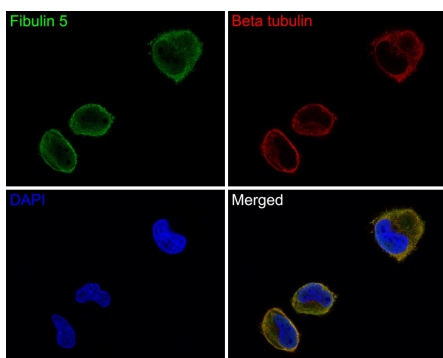


Fig7: Immunocytochemistry analysis of HeLa cells labeling Fibulin 5 with Rabbit anti-Fibulin 5 antibody (ER1802-95) at 1/100 dilution.

Cells were fixed in 4% paraformaldehyde for 10 minutes at 37 °C, permeabilized with 0.05% Triton X-100 in PBS for 20 minutes, and then blocked with 2% negative goat serum for 30 minutes at room temperature. Cells were then incubated with Rabbit anti-Fibulin 5 antibody (ER1802-95) at 1/100 dilution in 2% negative goat serum overnight at 4 °C. Goat Anti-Rabbit IgG H&L (Alexa Fluor® 488) was used as the secondary antibody at 1/1,000 dilution. Nuclear DNA was labelled in blue with DAPI.

Beta tubulin (M1305-2, red) was stained at 1/200 dilution overnight at +4 °C. Goat Anti-Mouse IgG H&L (Alexa Fluor® 647) were used as the secondary antibody at 1/1,000 dilution.

Note: All products are "FOR RESEARCH USE ONLY AND ARE NOT INTENDED FOR DIAGNOSTIC OR THERAPEUTIC USE".

Hangzhou Huaan Biotechnology Co., Ltd.

Orders:0086-571-88062880

Technical:0086-571-89986345

Service mail:support@huabio.cn

华安生物
HUABIO
www.huabio.cn

Applications:WB=Western blot IHC-P=Immunohistochemistry (paraffin) IF-Cell=Immunofluorescence (Cell) IF-Tissue=Immunofluorescence (Tissue) FC=Flow cytometry IP=Immunoprecipitation