

# Anti-ATG12 Antibody

## ER1802-82



<b>Product Type:</b>	Rabbit polyclonal IgG, primary antibodies
<b>Species reactivity:</b>	Human
<b>Applications:</b>	WB, IHC-P
<b>Molecular Wt:</b>	Predicted band size: 15 kDa

**Description:** Atg12 (autophagy-related protein 12), also known as APG12, APG12L, FBR93 or HAPG12, is a 140 amino acid protein that is ubiquitously expressed and belongs to the Atg12 family of proteins. Atg12 is a homolog of the yeast protein Apg12 that participates in autophagy. Autophagy is a membrane trafficking mechanism that delivers cytoplasmic cargo to the vacuole/lysosome for degradation and recycling. In yeast, autophagy requires a protein conjugation system consisting of Apg12 covalently bound at the carboxy terminal glycine to lysine 149 of Apg5. Similarly in humans, Atg12 is essential for autophagy and localizes to the cytoplasm where it is covalently bound to APG5, a conjugation reaction that requires APG7, Atg10 and ATP. The Atg12-APG5 conjugate functions as an important regulator of the autophagic process and is required for the change in membrane morphology and development of autophagosomes. Due to alternative splicing events, two Atg12 isoforms exist.

**Immunogen:** Recombinant protein within human Atg12 aa 1-120.

**Positive control:** A431 cell lysate, human kidney tissue lysate, 293T cell lysate, human liver cancer tissue, human colon tissue.

**Subcellular location:** Cytoplasm, Membrane.

**Database links:** SwissProt: O94817 Human

**Recommended Dilutions:**

<b>WB</b>	1:500-1:2,000
<b>IHC-P</b>	1:50-1:200

**Storage Buffer:** 1\*PBS (pH7.4), 0.2% BSA, 50% Glycerol. Preservative: 0.05% Sodium Azide.

**Storage Instruction:** Store at +4°C after thawing. Aliquot store at -20°C. Avoid repeated freeze / thaw cycles.

**Purity:** Immunogen affinity purified.

Hangzhou Huaan Biotechnology Co., Ltd.

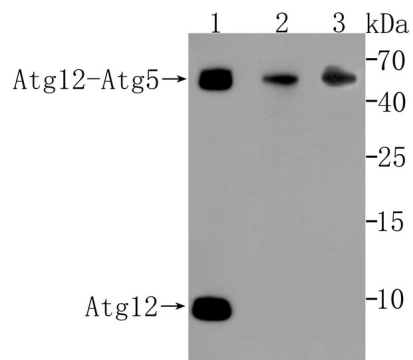
Orders:0086-571-88062880

Technical:0086-571-89986345

Service mail:support@huabio.cn

 华安生物  
HUABIO  
www.huabio.cn

## Images



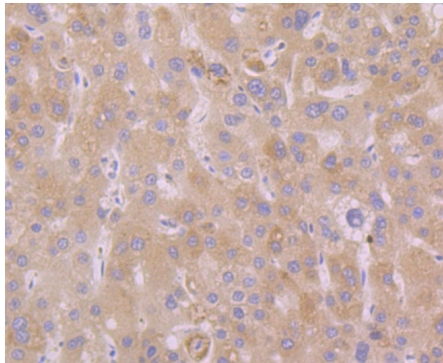
**Fig1:** Western blot analysis of Atg12 on different lysates using anti-Atg12 antibody at 1/500 dilution.

**Positive control:**

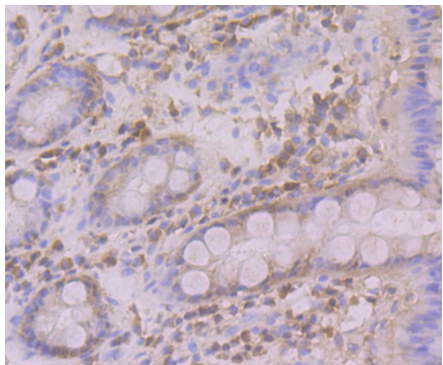
Lane 1: A431 cell lysate

Lane 2: Human kidney tissue lysate

Lane 3: 293T cell lysate



**Fig2:** Immunohistochemical analysis of paraffin-embedded human liver cancer tissue using anti-Atg12 antibody. Counter stained with hematoxylin.



**Fig3:** Immunohistochemical analysis of paraffin-embedded human colon tissue using anti-Atg12 antibody. Counter stained with hematoxylin.

**Note:** All products are "FOR RESEARCH USE ONLY AND ARE NOT INTENDED FOR DIAGNOSTIC OR THERAPEUTIC USE".

Hangzhou Huaan Biotechnology Co., Ltd.

Orders:0086-571-88062880

Technical:0086-571-89986345

Service mail:support@huabio.cn

华安生物  
HUABIO  
www.huabio.cn