

# Anti-CRMP2 Antibody

## ER1802-45



<b>Product Type:</b>	Rabbit polyclonal IgG, primary antibodies
<b>Species reactivity:</b>	Human, Mouse
<b>Applications:</b>	WB, IF-Cell, IHC-P
<b>Molecular Wt:</b>	Predicted band size: 62 kDa

**Description:** Collapsin response mediator proteins (CRMPs), including CRMP-1 (DRP-1), CRMP-2 (DRP-2 or TOAD64), CRMP-3 (DRP-4), CRMP-4 (DRP-3) and CRMP-5 (DRP-5), mediate signal transduction after exposure of neural cells to the axon guidance molecule Semaphorin 3A (SEMA3A)/collapsin. CRMPs are present in the developing cerebral cortex and neocortical neurons and are responsive to SEMA3A. In the adult brain, the expression of CRMPs is dramatically downregulated. However, they remain expressed in structures that retain their capacity for differentiation and plasticity. CRMP-2 is involved in axonal growth and guidance. The human CRMP-2 gene maps to 8p21.2, a chromosomal region that has been previously shown to have a significant linkage to schizophrenia and to several deficit symptoms of schizophrenia.

**Immunogen:** Recombinant protein within Human CRMP2 aa 90-320.

**Positive control:** Mouse brain tissue lysate, SH-SY-5Y, A549, SiHa, human tonsil tissue, human colon tissue, human breast cancer tissue.

**Subcellular location:** Cytosol. Cytoskeleton. Membrane.

**Database links:** SwissProt: Q16555 Human | O08553 Mouse

**Recommended Dilutions:**

<b>WB</b>	1:1,000-1:10,000
<b>IF-Cell</b>	1:50-1:200
<b>IHC-P</b>	1:50-1:200

**Storage Buffer:** 1\*PBS (pH7.4), 0.2% BSA, 50% Glycerol. Preservative: 0.05% Sodium Azide.

**Storage Instruction:** Shipped at 4°C. Store at +4°C short term (1-2 weeks). It is recommended to aliquot into single-use upon delivery. Store at -20°C long term.

**Purity:** Immunogen affinity purified.

Hangzhou Huaan Biotechnology Co., Ltd.

Orders:0086-571-88062880

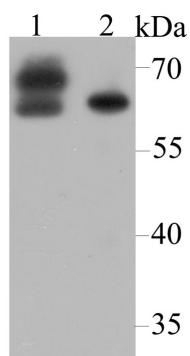
Technical:0086-571-89986345

Service mail:support@huabio.cn

华安生物  
HUABIO  
www.huabio.cn

Applications:WB=Western blot IHC-P=Immunohistochemistry (paraffin) IF-Cell=Immunofluorescence (Cell) IF-Tissue=Immunofluorescence (Tissue) FC=Flow cytometry IP=Immunoprecipitation

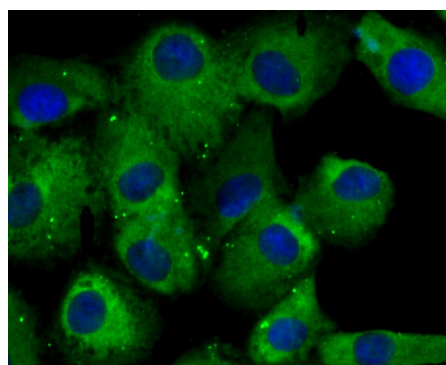
## Images



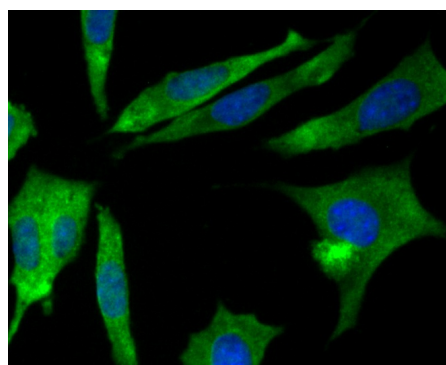
**Fig1:** Western blot analysis of CRMP2 on different lysates using anti-CRMP2 antibody at 1/10,000 dilution.

**Positive control:**

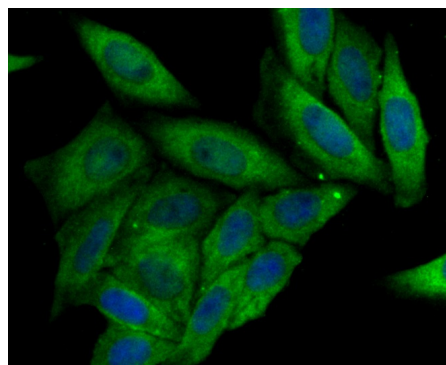
Lane 1: Mouse brain tissue Lane 2: SH-SY-5Y



**Fig2:** ICC staining CRMP2 in A549 cells (green). The nuclear counter stain is DAPI (blue). Cells were fixed in paraformaldehyde, permeabilised with 0.25% Triton X100/PBS.



**Fig3:** ICC staining CRMP2 in SH-SY-5Y cells (green). The nuclear counter stain is DAPI (blue). Cells were fixed in paraformaldehyde, permeabilised with 0.25% Triton X100/PBS.



**Fig4:** ICC staining CRMP2 in SiHa cells (green). The nuclear counter stain is DAPI (blue). Cells were fixed in paraformaldehyde, permeabilised with 0.25% Triton X100/PBS.

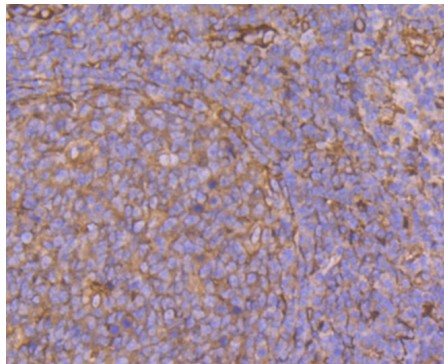
Hangzhou Huaan Biotechnology Co., Ltd.

Orders:0086-571-88062880

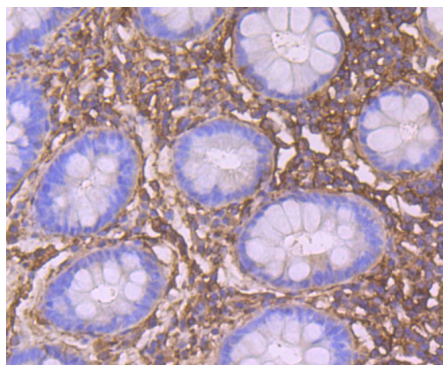
Technical:0086-571-89986345

Service mail:support@huabio.cn

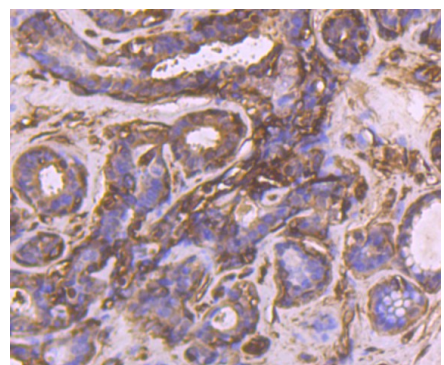
华安生物  
HUABIO  
www.huabio.cn



**Fig5:** Immunohistochemical analysis of paraffin-embedded human tonsil tissue using anti-CRMP2 antibody. Counter stained with hematoxylin.



**Fig6:** Immunohistochemical analysis of paraffin-embedded human colon tissue using anti-CRMP2 antibody. Counter stained with hematoxylin.



**Fig7:** Immunohistochemical analysis of paraffin-embedded human breast cancer tissue using anti-CRMP2 antibody. Counter stained with hematoxylin.

**Note:** All products are "FOR RESEARCH USE ONLY AND ARE NOT INTENDED FOR DIAGNOSTIC OR THERAPEUTIC USE".