

# Anti-Apolipoprotein A1 Antibody

## ER1802-29



<b>Product Type:</b>	Rabbit polyclonal IgG, primary antibodies
<b>Species reactivity:</b>	Human, Mouse, Rat
<b>Applications:</b>	WB, IF-Cell, IHC-P, FC
<b>Molecular Wt:</b>	27 kDa

**Description:** Apolipoprotein AI (Apo-AI) is a protein that in humans is encoded by the APOA1 gene. As the major component of high-density lipoprotein (HDL) particles, it has a specific role in lipid metabolism. Apolipoprotein AI is the major protein component of high density lipoprotein (HDL) particles in plasma. Chylomicrons secreted from the intestinal enterocyte also contain Apo-AI, but it is quickly transferred to HDL in the bloodstream. The protein, as a component of HDL particles, enables efflux of fat molecules by accepting fats from within cells (including macrophages within the walls of arteries which have become overloaded with ingested fats from oxidized low-density lipoprotein (LDL) particles) for transport (in the water outside cells) elsewhere, including back to LDL particles or to the liver for excretion.

**Immunogen:** Synthetic peptide within C-terminal human Apolipoprotein A1.

**Positive control:** Human liver tissue, HepG2, LOVO, SH-SY-5Y, rat liver tissue, mouse liver tissue.

**Subcellular location:** Secreted.

**Database links:** SwissProt: P02647 Human | Q00623 Mouse | P04639 Rat

### Recommended Dilutions:

<b>WB</b>	1:1,000-1:2,000
<b>IF-Cell</b>	1:50-1:200
<b>IHC-P</b>	1:50-1:100
<b>FC</b>	1:50-1:100

**Storage Buffer:** 1\*PBS (pH7.4), 0.2% BSA, 50% Glycerol. Preservative: 0.05% Sodium Azide.

**Storage Instruction:** Shipped at 4°C. Store at +4°C short term (1-2 weeks). It is recommended to aliquot into single-use upon delivery. Store at -20°C long term.

**Purity:** Immunogen affinity purified.

Hangzhou Huaan Biotechnology Co., Ltd.

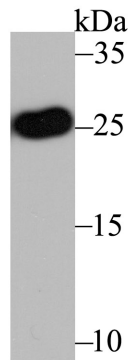
Orders:0086-571-88062880

Technical:0086-571-89986345

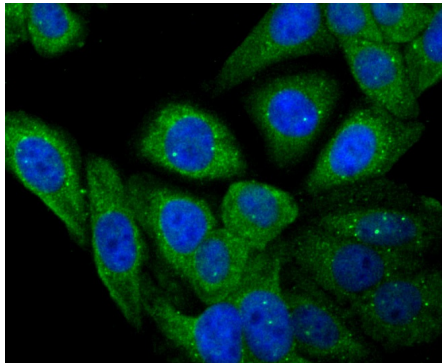
Service mail:support@huabio.cn

 华安生物  
HUABIO  
www.huabio.cn

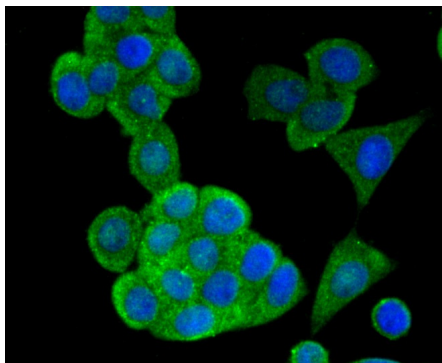
## Images



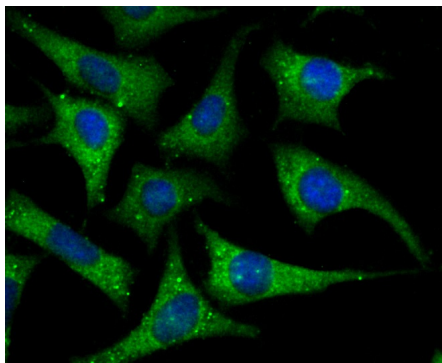
**Fig1:** Western blot analysis of Apolipoprotein A1 on human liver tissue lysate using anti-Apolipoprotein A1 antibody at 1/1,000 dilution.



**Fig2:** ICC staining Apolipoprotein A1 in HepG2 cells (green). The nuclear counter stain is DAPI (blue). Cells were fixed in paraformaldehyde, permeabilised with 0.25% Triton X100/PBS.



**Fig3:** ICC staining Apolipoprotein A1 in LOVO cells (green). The nuclear counter stain is DAPI (blue). Cells were fixed in paraformaldehyde, permeabilised with 0.25% Triton X100/PBS.



**Fig4:** ICC staining Apolipoprotein A1 in SH-SY-5Y cells (green). The nuclear counter stain is DAPI (blue). Cells were fixed in paraformaldehyde, permeabilised with 0.25% Triton X100/PBS.

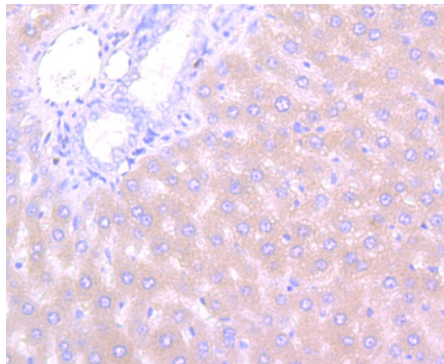
Hangzhou Huaan Biotechnology Co., Ltd.

Orders:0086-571-88062880

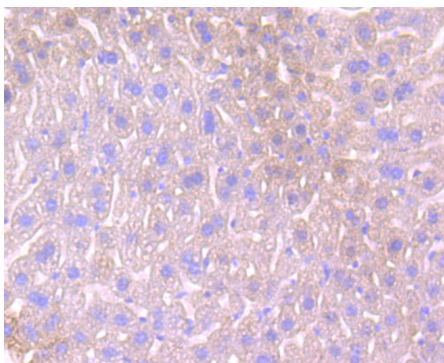
Technical:0086-571-89986345

Service mail:support@huabio.cn

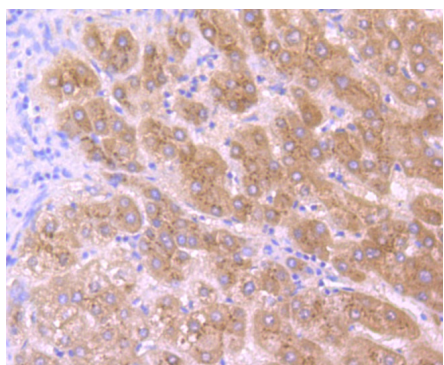
华安生物  
HUABIO  
www.huabio.cn



**Fig5:** Immunohistochemical analysis of paraffin-embedded rat liver tissue using anti-Apolipoprotein A1 antibody. Counter stained with hematoxylin.



**Fig6:** Immunohistochemical analysis of paraffin-embedded rat liver tissue using anti-Apolipoprotein A1 antibody. Counter stained with hematoxylin.



**Fig7:** Immunohistochemical analysis of paraffin-embedded human liver tissue using anti-Apolipoprotein A1 antibody. Counter stained with hematoxylin.

**Note:** All products are "FOR RESEARCH USE ONLY AND ARE NOT INTENDED FOR DIAGNOSTIC OR THERAPEUTIC USE".

### Background References

1. Xu X et al. Apolipoprotein A1-Related Proteins and Reverse Cholesterol Transport in Antiatherosclerosis Therapy: Recent Progress and Future Perspectives. *Cardiovasc Ther.* 2022 Jan
2. Maarfi F et al. A Study on Multiple Facets of Apolipoprotein A1 Milano. *Appl Biochem Biotechnol.* 2023 Jul

Hangzhou Huaan Biotechnology Co., Ltd.

Orders:0086-571-88062880

Technical:0086-571-89986345

Service mail:support@huabio.cn

华安生物  
HUABIO  
www.huabio.cn