

# Anti-CXCR4 Antibody

## ER1802-28



<b>Product Type:</b>	Rabbit polyclonal IgG, primary antibodies
<b>Species reactivity:</b>	Human, Rat
<b>Applications:</b>	WB, IF-Cell, FC
<b>Molecular Wt:</b>	45 kDa

<b>Description:</b>	The C-X-C or a chemokine family is characterized by a pair of cysteine residues separated by a single amino acid and primarily functions as chemoattractants for neutrophils. The C-X-C family includes IL-8, NAP-2, MSGA and stromal cell derived factor-1 (SDF-1). SDF-1 was originally described as a pre-B cell stimulatory factor, but has now been shown to function as a potent chemo-attractant for T cells and monocytes but not neutrophils. Receptors for the C-X-C family are G protein-coupled, seven pass transmembrane domain proteins which include IL-8RA, IL-8RB and CXCR-4 (also known as LESTR or fusin). CXCR-4 is highly homologous to the IL-8 receptors, sharing 37% sequence identity at the amino acid level. The IL-8 receptors bind to IL-8, NAP-2 and MSGA, while fusin binds to its cognate ligand, SDF-1. CXCR-4 has been identified as the major co-receptor for T-tropic HIV-1 and SDF-1 has been shown to inhibit HIV-1 infection.
---------------------	--

<b>Immunogen:</b>	Synthetic peptide within N-terminal of human CXCR4.
-------------------	---

<b>Positive control:</b>	293, K562, Hela, HUVEC, THP-1.
--------------------------	--------------------------------

<b>Subcellular location:</b>	Cell junction. Plasma membrane. Endosome. Lysosome.
------------------------------	---

<b>Database links:</b>	SwissProt: P61073 Human   O08565 Rat
------------------------	--------------------------------------

### Recommended Dilutions:

<b>WB</b>	1:500-1:1,000
<b>IF-Cell</b>	1:500-1:2,000
<b>FC</b>	1:50-1:100

<b>Storage Buffer:</b>	1*PBS (pH7.4), 0.2% BSA, 50% Glycerol. Preservative: 0.05% Sodium Azide.
------------------------	--

<b>Storage Instruction:</b>	Shipped at 4℃. Store at +4℃ short term (1-2 weeks). It is recommended to aliquot into single-use upon delivery. Store at -20℃ long term.
-----------------------------	--

<b>Purity:</b>	Immunogen affinity purified.
----------------	------------------------------

Hangzhou Huaan Biotechnology Co., Ltd.

Orders:0086-571-88062880

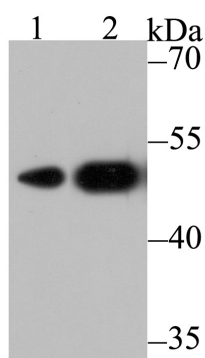
Technical:0086-571-89986345

Service mail:support@huabio.cn

华安生物  
HUABIO  
www.huabio.cn

Applications:WB=Western blot IHC-P=Immunohistochemistry (paraffin) IF-Cell=Immunofluorescence (Cell) IF-Tissue=Immunofluorescence (Tissue) FC=Flow cytometry IP=Immunoprecipitation

## Images

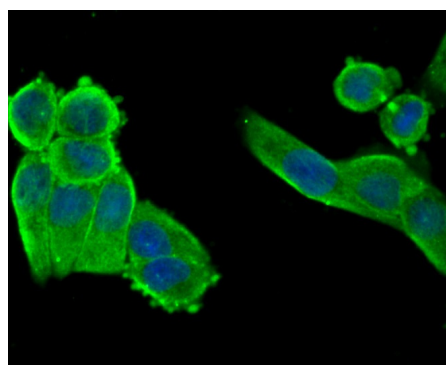


**Fig1:** Western blot analysis of CXCR4 on different cell lysates using anti-CXCR4 antibody at 1/500 dilution.

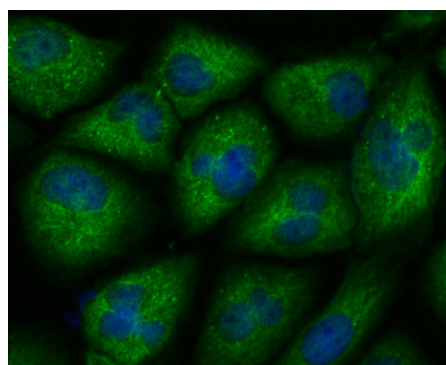
**Positive control:**

Lane 1: 293

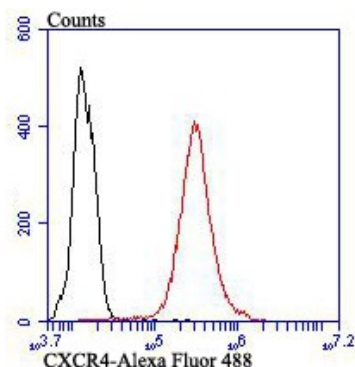
Lane 2: K562



**Fig2:** ICC staining CXCR4 in HeLa cells (green). The nuclear counter stain is DAPI (blue). Cells were fixed in paraformaldehyde, permeabilised with 0.25% Triton X100/PBS.



**Fig3:** ICC staining CXCR4 in HUVEC cells (green). The nuclear counter stain is DAPI (blue). Cells were fixed in paraformaldehyde, permeabilised with 0.25% Triton X100/PBS.



**Fig4:** Flow cytometric analysis of THP-1 cells with CXCR4 antibody at 1/100 dilution (red) compared with an unlabelled control (cells without incubation with primary antibody; black). Alexa Fluor 488-conjugated goat anti-rabbit IgG was used as the secondary antibody.

Hangzhou Huaan Biotechnology Co., Ltd.

Orders:0086-571-88062880

Technical:0086-571-89986345

Service mail:support@huabio.cn

华安生物  
HUABIO  
www.huabio.cn

---

**Note:** All products are "FOR RESEARCH USE ONLY AND ARE NOT INTENDED FOR DIAGNOSTIC OR THERAPEUTIC USE".

---

**Hangzhou Huaan Biotechnology Co., Ltd.**

Orders: 0086-571-88062880

Technical: 0086-571-89986345

Service mail: support@huabio.cn

 华安生物  
HUAABIO  
www.huabio.cn

Applications: WB=Western blot IHC-P=Immunohistochemistry (paraffin) IF-Cell=Immunofluorescence (Cell) IF-Tissue=Immunofluorescence (Tissue) FC=Flow cytometry IP=Immunoprecipitation