

# Anti-ADAM10 Antibody

ER1706-97



<b>Product Type:</b>	Rabbit polyclonal IgG, primary antibodies
<b>Species reactivity:</b>	Human
<b>Applications:</b>	WB, IHC-P
<b>Molecular Wt:</b>	Predicted band size: 84 kDa

**Description:** ADAM (a disintegrin and metalloprotease) proteins are a family of over 30 membrane-anchored, glycosylated, Zn<sup>2+</sup> dependent proteases that are involved in cell-cell, cell-matrix interface related processes including fertilization, muscle fusion, secretion of TNF $\alpha$  (tumor necrosis factor  $\alpha$ ), and modulation of the neurogenic function of Notch and Delta. ADAM proteins possess a signal-domain, a pro-domain, a metalloprotease domain, a disintegrin domain (integrin ligand) a cysteine-rich region, an epidermal growth factor-like domain, a transmembrane domain and a cytoplasmic tail. ADAMs are expressed in brain, testis, epididymis, ovary, breast, placenta, liver, heart, lung, bone and muscle, and catalyze proteolysis, adhesion, fusion and intracellular signaling. ADAM10 is a TNF-processing enzyme that cleaves pro-TNF, a membrane-bound precursor protein, at Ala 76-Val 77, which causes membrane shedding of soluble TNF.

**Immunogen:** Recombinant protein within human ADAM10 aa 60-338.

**Positive control:** SiHa, human prostate tissue.

**Subcellular location:** Golgi apparatus, Plasma membrane, Cell junction, Cell membrane, Cell projection, Cytoplasm.

**Database links:** SwissProt: O14672 Human

**Recommended Dilutions:**

<b>WB</b>	1:500-1:5,000
<b>IHC-P</b>	1:50-1:200

**Storage Buffer:** 1\*PBS (pH7.4), 0.2% BSA, 50% Glycerol. Preservative: 0.05% Sodium Azide.

**Storage Instruction:** Shipped at 4°C. Store at +4°C short term (1-2 weeks). It is recommended to aliquot into single-use upon delivery. Store at -20°C long term.

**Purity:** Immunogen affinity purified.

Hangzhou Huaan Biotechnology Co., Ltd.

Orders:0086-571-88062880

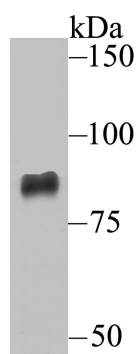
Technical:0086-571-89986345

Service mail:support@huabio.cn

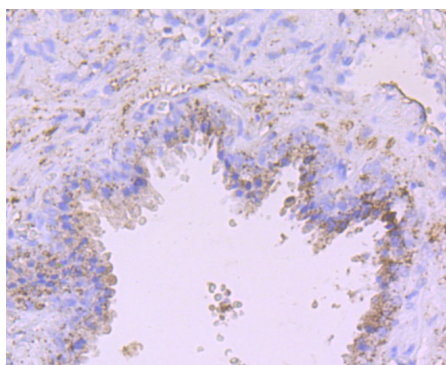
华安生物  
HUABIO  
www.huabio.cn

Applications:WB=Western blot IHC-P=Immunohistochemistry (paraffin) IF-Cell=Immunofluorescence (Cell) IF-Tissue=Immunofluorescence (Tissue) FC=Flow cytometry IP=Immunoprecipitation

## Images



**Fig1:** Western blot analysis of ADAM10 on SiHa cell lysate using anti-ADAM10 antibody at 1/5,000 dilution.



**Fig2:** Immunohistochemical analysis of paraffin-embedded human prostate tissue using anti-ADAM10 antibody. Counter stained with hematoxylin.

**Note:** All products are "FOR RESEARCH USE ONLY AND ARE NOT INTENDED FOR DIAGNOSTIC OR THERAPEUTIC USE".

## Background References

1. Gutwein P et al. ADAM10-mediated cleavage of L1 adhesion molecule at the cell surface and in released membrane vesicles. FASEB J 17:292-294 (2003).
2. Vincent B et al. The disintegrins ADAM10 and TACE contribute to the constitutive and phorbol ester-regulated normal cleavage of the cellular prion protein. J Biol Chem 276:37743-37746 (2001).

Hangzhou Huaan Biotechnology Co., Ltd.

Orders:0086-571-88062880

Technical:0086-571-89986345

Service mail:support@huabio.cn

华安生物  
HUABIO  
www.huabio.cn

Applications:WB=Western blot IHC-P=Immunohistochemistry (paraffin) IF-Cell=Immunofluorescence (Cell) IF-Tissue=Immunofluorescence (Tissue) FC=Flow cytometry IP=Immunoprecipitation