

# Anti-eIF4EBP1 Antibody

## ER1706-64



<b>Product Type:</b>	Rabbit polyclonal IgG, primary antibodies
<b>Species reactivity:</b>	Human, Mouse, Rat
<b>Applications:</b>	WB, IF-Cell, IHC-P, FC
<b>Molecular Wt:</b>	Predicted band size: 12.5 kDa

**Description:** Eukaryotic translation initiation factor 4E-binding protein 1 (also known as 4E-BP1) is a protein that in humans is encoded by the EIF4EBP1 gene. This gene encodes one member of a family of translation repressor proteins. The protein directly interacts with eukaryotic translation initiation factor 4E (eIF4E), which is a limiting component of the multisubunit complex that recruits 40S ribosomal subunits to the 5' end of mRNAs. Interaction of this protein with eIF4E inhibits complex assembly and represses translation. This protein is phosphorylated in response to various signals including UV irradiation and insulin signaling, resulting in its dissociation from eIF4E and activation of cap-dependent mRNA translation.

**Immunogen:** Recombinant protein within Human eIF4EBP1 aa 1-118 / 118.

**Positive control:** Mouse placenta tissue, PC-3M, 293T, rat esophagus tissue, human tonsil tissue, human pancreas tissue, mouse small intestine tissue.

**Subcellular location:** Cytoplasm. Nucleus.

**Database links:** SwissProt: Q13541 Human | Q60876 Mouse | Q62622 Rat

### Recommended Dilutions:

<b>WB</b>	1:500-1:1,000
<b>IF-Cell</b>	1:500-1:1,000
<b>IHC-P</b>	1:50-1:200
<b>FC</b>	1:50-1:100

**Storage Buffer:** 1\*PBS (pH7.4), 0.2% BSA, 50% Glycerol. Preservative: 0.05% Sodium Azide.

**Storage Instruction:** Shipped at 4°C. Store at +4°C short term (1-2 weeks). It is recommended to aliquot into single-use upon delivery. Store at -20°C long term.

**Purity:** Immunogen affinity purified.

Hangzhou Huaan Biotechnology Co., Ltd.

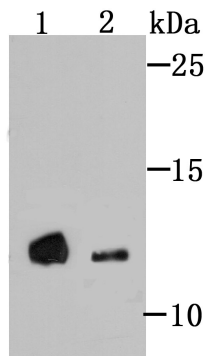
Orders:0086-571-88062880

Technical:0086-571-89986345

Service mail:support@huabio.cn

 华安生物  
HUABIO  
www.huabio.cn

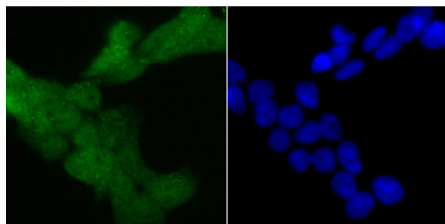
## Images



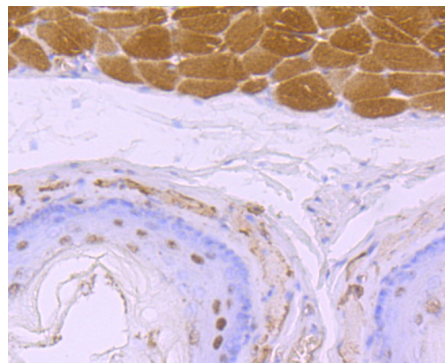
**Fig1:** Western blot analysis of 4E-BP1 on different lysates using anti-4E-BP1 antibody at 1/500 dilution.

Lane 1: PC-3M

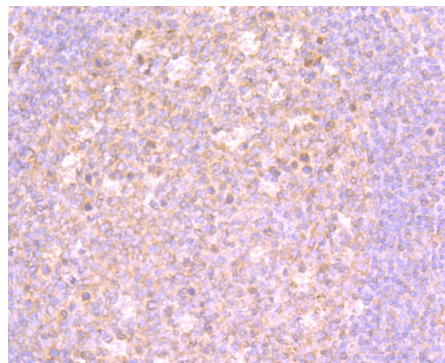
Lane 2: Mouse placenta tissue



**Fig2:** ICC staining 4E-BP1 in 293T cells (green). The nuclear counter stain is DAPI (blue). Cells were fixed in paraformaldehyde, permeabilised with 0.25% Triton X100/PBS.



**Fig3:** Immunohistochemical analysis of paraffin-embedded rat esophagus tissue using anti-4E-BP1 antibody. Counter stained with hematoxylin.



**Fig4:** Immunohistochemical analysis of paraffin-embedded human tonsil tissue using anti-4E-BP1 antibody. Counter stained with hematoxylin.

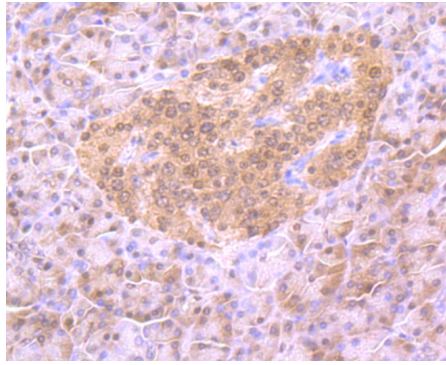
Hangzhou Huaan Biotechnology Co., Ltd.

Orders:0086-571-88062880

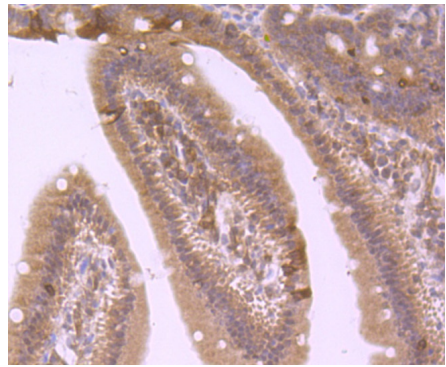
Technical:0086-571-89986345

Service mail:support@huabio.cn

华安生物  
HUABIO  
www.huabio.cn



**Fig5:** Immunohistochemical analysis of paraffin-embedded human pancreas tissue using anti-4E-BP1 antibody. Counter stained with hematoxylin.



**Fig6:** Immunohistochemical analysis of paraffin-embedded mouse small intestine tissue using anti-4E-BP1 antibody. Counter stained with hematoxylin.

**Note:** All products are “FOR RESEARCH USE ONLY AND ARE NOT INTENDED FOR DIAGNOSTIC OR THERAPEUTIC USE”.

### Background References

1. Pause A et al. Insulin-dependent stimulation of protein synthesis by phosphorylation of a regulator of 5'-cap function. *Nature* 371:762-767 (1994).
2. Yanagiya A et al. Translational homeostasis via the mRNA cap-binding protein, eIF4E. *Mol Cell* 46:847-858 (2012).

Hangzhou Huaan Biotechnology Co., Ltd.

Orders:0086-571-88062880

Technical:0086-571-89986345

Service mail:support@huabio.cn

华安生物  
HUABIO  
www.huabio.cn