

Anti-PINK1 Antibody

ER1706-27



Product Type:	Rabbit polyclonal IgG, primary antibodies
Species reactivity:	Human
Applications:	WB
Molecular Wt:	Predicted band size: 63 kDa

Description: A member of the serine / threonine protein kinase family, PTEN induced putative kinase 1 (PINK1) is a tumor suppressor. PINK1 is primarily located in mitochondria, and is ubiquitously expressed in testis, skeletal muscle, and heart tissue. at lower levels in pancreas, ovary, brain, placenta, kidney, liver, prostate and small intestine. During cellular stress PINK1 protects against mitochondrial dysfunction by inducing phosphorylation mitochondrial proteins. PINK1 mutations may give rise to different autophosphorylation activity. Mutations in the PINK1 gene (PARK6) are associated with early onset Parkinson's disease, a recessive neurodegenerative disorder characterized by resting tremor, muscular rigidity, bradykinesia and postural instability. Parkinson's disease generally involves the presence of intraneuronal accumulations of aggregated proteins (Lewy bodies) in brain neurons.

Immunogen: Recombinant protein within Human PINK1 aa 94-581 / 581.

Positive control: HeLa treated with 10 μ M CCCP for 24 hours cell lysate.

Subcellular location: Mitochondrion outer membrane, Mitochondrion inner membrane, Cytoplasm, cytosol.

Database links: SwissProt: Q9BXM7 Human

Recommended Dilutions:
WB 1:1,000

Storage Buffer: PBS (pH7.4), 0.1% BSA, 40% Glycerol. Preservative: 0.05% Sodium Azide.

Storage Instruction: Store at +4 $^{\circ}$ C after thawing. Aliquot store at -20 $^{\circ}$ C. Avoid repeated freeze / thaw cycles.

Purity: Immunogen affinity purified.

Hangzhou Huaan Biotechnology Co., Ltd.

Orders:0086-571-88062880

Technical:0086-571-89986345

Service mail:support@huabio.cn

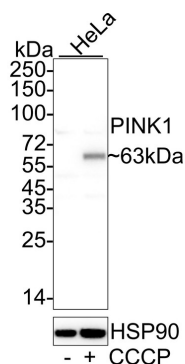
 华安生物
HUABIO
www.huabio.cn

Images

Fig1: Western blot analysis of PINK1 on different lysates with Rabbit anti-PINK1 antibody (ER1706-27) at 1/1,000 dilution.

Lane 1: HeLa cell lysate

Lane 2: HeLa treated with 10 μ M CCCP for 24 hours cell lysate



Lysates/proteins at 20 μ g/Lane.

Predicted band size: 63 kDa

Observed band size: 63 kDa

Exposure time: 8 seconds; ECL: K1801;

4-20% SDS-PAGE gel.

Proteins were transferred to a PVDF membrane and blocked with 5% NFDM/TBST for 1 hour at room temperature. The primary antibody (ER1706-27) at 1/1,000 dilution was used in 5% NFDM/TBST at 4 $^{\circ}$ C overnight. Goat Anti-Rabbit IgG - HRP Secondary Antibody (HA1001) at 1/50,000 dilution was used for 1 hour at room temperature.

Note: All products are "FOR RESEARCH USE ONLY AND ARE NOT INTENDED FOR DIAGNOSTIC OR THERAPEUTIC USE".

Background References

1. Quinn PMJ et al. PINK1/PARKIN signalling in neurodegeneration and neuroinflammation. Acta Neuropathol Commun. 2020 Nov
2. Han R et al. PINK1-PRKN mediated mitophagy: differences between in vitro and in vivo models. Autophagy. 2023 May

Hangzhou Huaan Biotechnology Co., Ltd.

Orders:0086-571-88062880

Technical:0086-571-89986345

Service mail:support@huabio.cn

华安生物
HUABIO
www.huabio.cn