

Anti-WNT2 Antibody

ER1511-4



Product Type:	Rabbit polyclonal IgG, primary antibodies
Species reactivity:	Human, Mouse
Applications:	WB, FC
Molecular Wt:	Predicted band size: 40 kDa

Description: This gene is a member of the WNT gene family. The WNT gene family consists of structurally related genes that encode secreted signaling proteins involved in the Wnt signaling pathway. These proteins have been implicated in oncogenesis and in several developmental processes, including regulation of cell fate and patterning during embryogenesis. Alternatively spliced transcript variants have been identified for this gene. Ligand for members of the frizzled family of seven transmembrane receptors. Functions in the canonical Wnt signaling pathway that results in activation of transcription factors of the TCF/LEF family. Functions as upstream regulator of FGF10 expression. Plays an important role in embryonic lung development. May contribute to embryonic brain development by regulating the proliferation of dopaminergic precursors and neurons.

Immunogen: Synthetic peptide within human WNT2 aa 209-263.

Positive control: PC-3M cell lysate, Mouse brain tissue, Jurkat cell lysate, Human lung tissue, Jurkat.

Subcellular location: Secreted, Extracellular matrix.

Database links: SwissProt: P09544 Human

Recommended Dilutions:

WB	1:1,000-1:2,000
FC	1:100-1:200

Storage Buffer: 1*PBS (pH7.4), 0.2% BSA, 50% Glycerol. Preservative: 0.05% Sodium Azide.

Storage Instruction: Store at +4℃ after thawing. Aliquot store at -20℃ or -80℃. Avoid repeated freeze / thaw cycles.

Purity: Immunogen affinity purified.

Hangzhou HuaAn Biotechnology Co.,Ltd.

Orders: 0086-571-88062880

Technical:0086-571-89986345

Service mail: support@huabio.cn

www.huabio.cn



Applications: WB=Western blot IP=Immunoprecipitation IHC=Immunohistochemistry IF=Immunofluorescence FC=Flow cytometry

Images

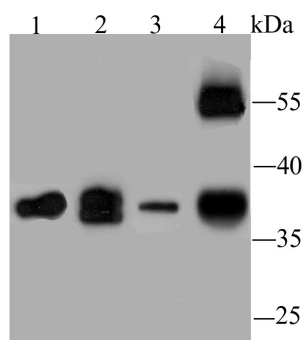


Fig1: Western blot analysis of WNT2 on different lysates using anti-WNT2 antibody at 1/1,000 dilution.

Positive control:

Lane 1: PC-3M cell lysate

Lane 2: Mouse brain tissue

Lane 3: Jurkat cell lysate

Lane 4: Human lung tissue

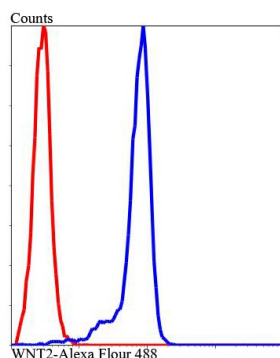


Fig2: Flow cytometric analysis of Jurkat cells with WNT2 antibody at 1/100 dilution (blue) compared with an unlabelled control (cells without incubation with primary antibody; red). Alexa Fluor 488-conjugated Goat anti rabbit IgG was used as the secondary antibody.

Note: All products are "FOR RESEARCH USE ONLY AND ARE NOT INTENDED FOR DIAGNOSTIC OR THERAPEUTIC USE".