

# Anti-N-Cadherin Antibody

## ER0503



<b>Product Type:</b>	Rabbit polyclonal IgG, primary antibodies
<b>Species reactivity:</b>	Human, Mouse, Rat
<b>Applications:</b>	WB, IHC, IF
<b>Molecular Wt:</b>	Predicted band size: 100 kDa

**Description:** The cadherins are a large family of cell adhesion molecules involved in calcium-dependent recognition and adhesion events. The cadherin subfamily includes N-, P-, B-, and E-cadherins, and other members. Recent studies indicate that cancer cells have up-regulated N-cadherin in addition to loss of E-cadherin. N-cadherin cooperates with the FGF receptor, leading to overexpression of MMP-9 and cellular invasion. N-Cadherin is commonly found in cancer cells and provides a mechanism for transendothelial migration. When a cancer cell adheres to the endothelial cells of a blood vessel it up-regulates the src kinase pathway, which phosphorylates beta-catenins attached to both N-cadherin (this protein) and E-cadherins.

**Immunogen:** Synthetic peptide corresponding to Human N-Cadherin aa 391-440 / 906 (H412G).

**Positive control:** Brain, Epithelium, Liver

**Subcellular location:** Cell membrane

**Database links:** SwissProt: P19022 Human | P15116 Mouse | Q9Z1Y3 Rat

**Recommended Dilutions:**

<b>WB</b>	1:500-1:2,000
<b>IHC</b>	1:100-1:300
<b>IF</b>	1:200-1:1,000

**Storage Buffer:** 1\*PBS (pH7.4), 0.2% BSA, 40% Glycerol. Preservative: 0.05% Sodium Azide.

**Storage Instruction:** -15°C to -25°C/1 year (Do not lower than -25°C)

**Purity:** Immunogen affinity purified.

Hangzhou Huaan Biotechnology Co., Ltd.

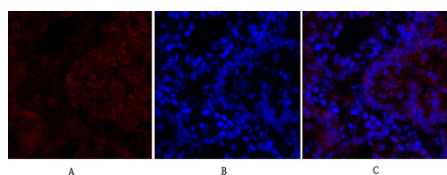
Orders: 0086-571-88062880

Technical: 0086-571-89986345

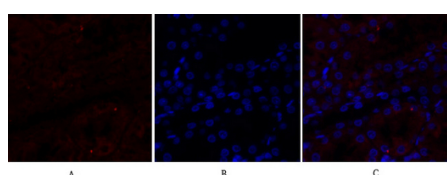
Service mail: support@huabio.cn

华安生物  
HUABIO  
www.huabio.cn

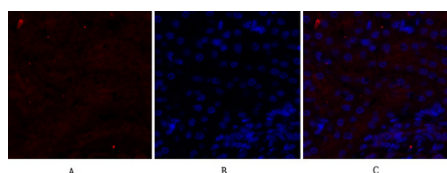
## Images



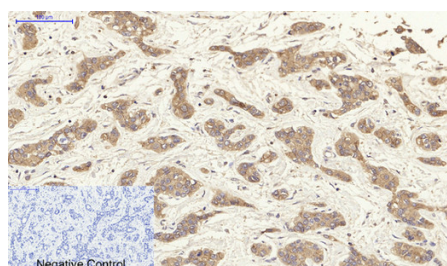
**Fig1:** Immunofluorescence analysis of rat-lung tissue. 1, N-Cadherin Polyclonal Antibody (red) was diluted at 1:200 (4°C, overnight). 2, Cy3 labeled Secondary antibody was diluted at 1:300 (room temperature, 50min). 3, Picture B: DAPI (blue) 10min. Picture A: Target. Picture B: DAPI. Picture C: merge of A+B



**Fig2:** Immunofluorescence analysis of rat-kidney tissue. 1, N-Cadherin Polyclonal Antibody (red) was diluted at 1:200 (4°C, overnight). 2, Cy3 labeled Secondary antibody was diluted at 1:300 (room temperature, 50min). 3, Picture B: DAPI (blue) 10min. Picture A: Target. Picture B: DAPI. Picture C: merge of A+B



**Fig3:** Immunofluorescence analysis of mouse-kidney tissue. 1, N-Cadherin Polyclonal Antibody (red) was diluted at 1:200 (4°C, overnight). 2, Cy3 labeled Secondary antibody was diluted at 1:300 (room temperature, 50min). 3, Picture B: DAPI (blue) 10min. Picture A: Target. Picture B: DAPI. Picture C: merge of A+B



**Fig4:** Immunohistochemical analysis of paraffin-embedded Human-liver-cancer tissue. 1, N-Cadherin Polyclonal Antibody was diluted at 1:200 (4°C, overnight). 2, Sodium citrate pH 6.0 was used for antibody retrieval (>98°C, 20min). 3, Secondary antibody was diluted at 1:200 (room temperature, 30min). Negative control was used by secondary antibody only.

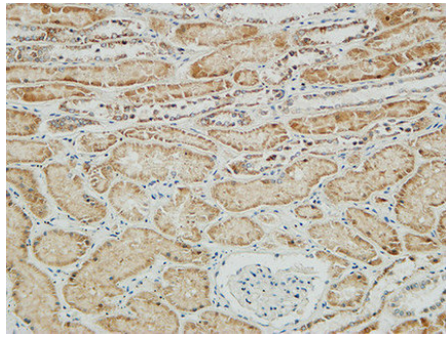
Hangzhou Huaan Biotechnology Co., Ltd.

Orders: 0086-571-88062880

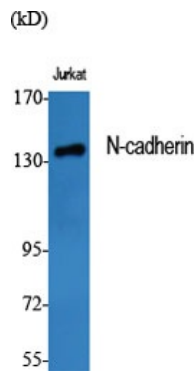
Technical: 0086-571-89986345

Service mail: support@huabio.cn

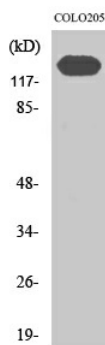
华安生物  
HUABIO  
www.huabio.cn



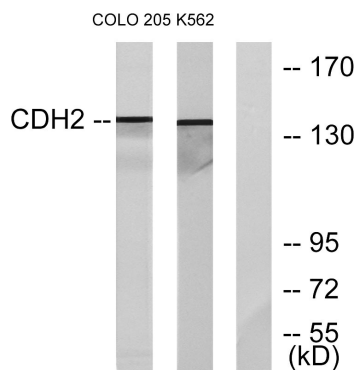
**Fig5:** Immunohistochemical analysis of paraffin-embedded Human kidney. 1,N-Cadherin Polyclonal Antibody was diluted at 1:200(4° overnight). 2, High-pressure and temperature EDTA, pH8.0 was used for antigen retrieval. 3,Secondary antibody was diluted at 1:200(room temperature, 30min).



**Fig6:** Western Blot analysis of Jurkat cells using N-Cadherin Polyclonal Antibody diluted at 1:1000



**Fig7:** Western Blot analysis of K562 cells using N-Cadherin Polyclonal Antibody diluted at 1:1000



**Fig8:** Western blot analysis of lysates from COLO205 and K562 cells, using CDH2 Antibody. The lane on the right is blocked with the synthesized peptide.

---

**Note:** All products are "FOR RESEARCH USE ONLY AND ARE NOT INTENDED FOR DIAGNOSTIC OR THERAPEUTIC USE".

---

### Background References

1. Liu J et al. Loss of DLG5 promotes breast cancer malignancy by inhibiting the Hippo signaling pathway. *Sci Rep* 7:42125-42125 (2017).
2. Chen R et al. Glycoproteomics analysis of human liver tissue by combination of multiple enzyme digestion and hydrazide chemistry. *J Proteome Res* 8:651-661 (2009).

**Hangzhou Huaan Biotechnology Co., Ltd.**

Orders:0086-571-88062880

Technical:0086-571-89986345

Service mail:support@huabio.cn

 华安生物  
HUAABIO  
www.huabio.cn