

Anti-ApoER2 Antibody [13B2]

EM1902-30



Product Type:	Mouse monoclonal IgG2a, primary antibodies
Species reactivity:	Human
Applications:	WB, IHC-P
Molecular Wt:	Predicted band size: 106 kDa
Clone number:	13B2

Description: Cell surface receptor for Reelin (RELN) and apolipoprotein E (apoE)-containing ligands. LRP8 participates in transmitting the extracellular Reelin signal to intracellular signaling processes, by binding to DAB1 on its cytoplasmic tail. Reelin acts via both the VLDL receptor (VLDLR) and LRP8 to regulate DAB1 tyrosine phosphorylation and microtubule function in neurons. LRP8 has higher affinity for Reelin than VLDLR. LRP8 is thus a key component of the Reelin pathway which governs neuronal layering of the forebrain during embryonic brain development. Binds the endoplasmic reticulum resident receptor-associated protein (RAP). Binds dimers of beta 2-glycoprotein I and may be involved in the suppression of platelet aggregation in the vasculature. Highly expressed in the initial segment of the epididymis, where it affects the functional expression of clusterin and phospholipid hydroperoxide glutathione peroxidase (PHGPx), two proteins required for sperm maturation. May also function as an endocytic receptor. Not required for endocytic uptake of SEPP1 in the kidney which is mediated by LRP2 (By similarity). Together with its ligand, apolipoprotein E (apoE), may indirectly play a role in the suppression of the innate immune response by controlling the survival of myeloid-derived suppressor cells (By similarity).

Immunogen:	Recombinant protein within Human ApoER2 aa 47-275 / 963.
Positive control:	A549 cell lysate, SHSY5Y cell lysate, SKBR-3 cell lysate, U937 cell lysate, HeLa, A549, human testis tissue.
Subcellular location:	Cell membrane, Secreted.
Database links:	SwissProt: Q14114 Human
Recommended Dilutions:	
WB	1:500
IHC-P	1:400
Storage Buffer:	1*PBS (pH7.4), 0.2% BSA, 50% Glycerol. Preservative: 0.05% Sodium Azide.
Storage Instruction:	Shipped at 4°C. Store at +4°C short term (1-2 weeks). It is recommended to aliquot into single-use upon delivery. Store at -20°C long term.
Purity:	Protein A affinity purified.

Hangzhou Huaan Biotechnology Co., Ltd.

Orders:0086-571-88062880

Technical:0086-571-89986345

Service mail:support@huabio.cn

 华安生物
HUABIO
www.huabio.cn

Images

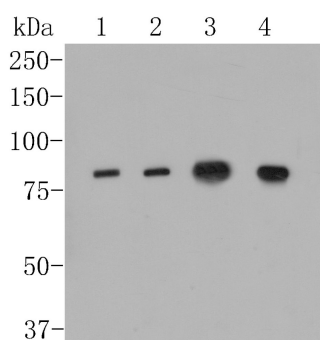


Fig1: Western blot analysis of ApoER2 on different lysates. Proteins were transferred to a PVDF membrane and blocked with 5% BSA in PBS for 1 hour at room temperature. The primary antibody (EM1902-30, 1/500) was used in 5% BSA at room temperature for 2 hours. Goat Anti-Mouse IgG - HRP Secondary Antibody (HA1006) at 1:5,000 dilution was used for 1 hour at room temperature.

Positive control:

Lane 1: A549 cell lysate
 Lane 2: SHSY5Y cell lysate
 Lane 3: SKBR-3 cell lysate
 Lane 4: U937 cell lysate

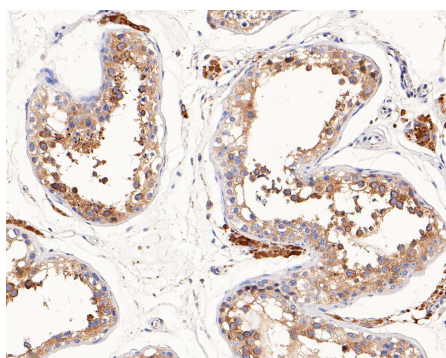


Fig2: Immunohistochemical analysis of paraffin-embedded human testis tissue with Mouse anti-ApoER2 antibody (EM1902-30) at 1/400 dilution.

The section was pre-treated using heat mediated antigen retrieval with Tris-EDTA buffer (pH 9.0) for 20 minutes. The tissues were blocked in 1% BSA for 20 minutes at room temperature, washed with ddH₂O and PBS, and then probed with the primary antibody (EM1902-30) at 1/400 dilution for 1 hour at room temperature. The detection was performed using an HRP conjugated compact polymer system. DAB was used as the chromogen. Tissues were counterstained with hematoxylin and mounted with DPX.

Note: All products are "FOR RESEARCH USE ONLY AND ARE NOT INTENDED FOR DIAGNOSTIC OR THERAPEUTIC USE".

Background References

1. Andersen O.M.et.al.Differential binding of ligands to the apolipoprotein E receptor 2.Biochemistry 42:9355-9364(2003).

Hangzhou Huaan Biotechnology Co., Ltd.

Orders:0086-571-88062880

Technical:0086-571-89986345

Service mail:support@huabio.cn

华安生物
 HUABIO
 www.huabio.cn