

Anti-ALDH1A1 Antibody [8F1]

EM1801-07



Product Type:	Mouse monoclonal IgG1, primary antibodies
Species reactivity:	Human, Rat, Mouse
Applications:	WB, IHC-P, IF-Cell, FC, IHC-Fr
Molecular Wt:	Predicted band size: 55 kDa
Clone number:	8F1

Description: The protein encoded by this gene belongs to the aldehyde dehydrogenase family. Aldehyde dehydrogenase is the next enzyme after alcohol dehydrogenase in the major pathway of alcohol metabolism. There are two major aldehyde dehydrogenase isozymes in the liver, cytosolic and mitochondrial, which are encoded by distinct genes, and can be distinguished by their electrophoretic mobility, kinetic properties, and subcellular localization. This gene encodes the cytosolic isozyme. Studies in mice show that through its role in retinol metabolism, this gene may also be involved in the regulation of the metabolic responses to high-fat diet.

Immunogen: Recombinant protein within Human ALDH1A1 aa 1-501 / 501.

Positive control: A549 cell lysate, HT-29 cell lysate, HepG2 cell lysate, K-562 cell lysate, human liver tissue lysate, human lung tissue lysate, A549, rat epididymis tissue, human liver tissue, human pancreas tissue, mouse hippocampus tissue, mouse cerebral cortex tissue, mouse substantia nigra tissue.

Subcellular location: Cell projection, Cytoplasm.

Database links: SwissProt: P00352 Human | P51647 Rat

Recommended Dilutions:

WB	1:2,000-1:10,000
IHC-P	1:50-1:200
IF-Cell	1:100
FC	1:1,000
IHC-Fr	1:50

Storage Buffer: 1*PBS (pH7.4), 0.2% BSA, 50% Glycerol. Preservative: 0.05% Sodium Azide.

Storage Instruction: Shipped at 4°C. Store at +4°C short term (1-2 weeks). It is recommended to aliquot into single-use upon delivery. Store at -20°C long term.

Purity: Protein G affinity purified.

Hangzhou Huaan Biotechnology Co., Ltd.

Orders:0086-571-88062880

Technical:0086-571-89986345

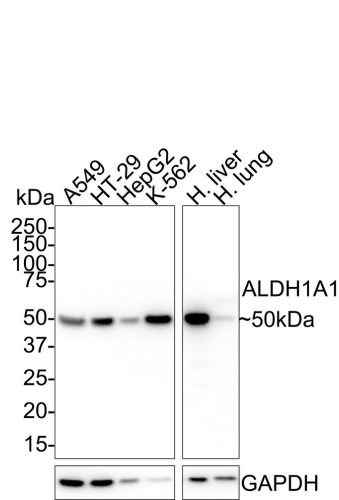
Service mail:support@huabio.cn

华安生物
HUABIO
www.huabio.cn

Applications:WB=Western blot IHC-P=Immunohistochemistry (paraffin) IF-Cell=Immunofluorescence (Cell) IF-Tissue=Immunofluorescence (Tissue) FC=Flow cytometry IP=Immunoprecipitation

Images

Fig1: Western blot analysis of ALDH1A1 on different lysates with Mouse anti-ALDH1A1 antibody (EM1801-07) at 1/1,000 dilution.



Lane 1: A549 cell lysate (20 µg/Lane)
Lane 2: HT-29 cell lysate (20 µg/Lane)
Lane 3: HepG2 cell lysate (20 µg/Lane)
Lane 4: K-562 cell lysate (20 µg/Lane)
Lane 5: Human liver tissue lysate (40 µg/Lane)
Lane 6: Human lung tissue lysate (40 µg/Lane)

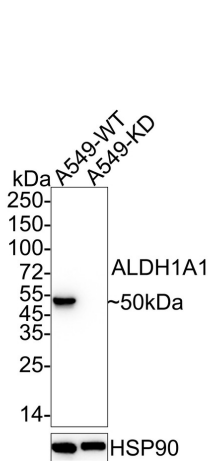
Predicted band size: 55 kDa
Observed band size: 50 kDa

Exposure time: 5 seconds;

4-20% SDS-PAGE gel.

Proteins were transferred to a PVDF membrane and blocked with 5% NFDM/TBST for 1 hour at room temperature. The primary antibody (EM1801-07) at 1/1,000 dilution was used in 5% NFDM/TBST at room temperature for 2 hours. Goat Anti-Mouse IgG - HRP Secondary Antibody (HA1006) at 1/50,000 dilution was used for 1 hour at room temperature.

Fig2: Western blot analysis of ALDH1A1 on different lysates with Mouse anti-ALDH1A1 antibody (EM1801-07) at 1/2,000 dilution.



Lane 1: A549-WT cell lysate
Lane 2: A549-KD ALDH1A1 cell lysate

Lysates/proteins at 10 µg/Lane.

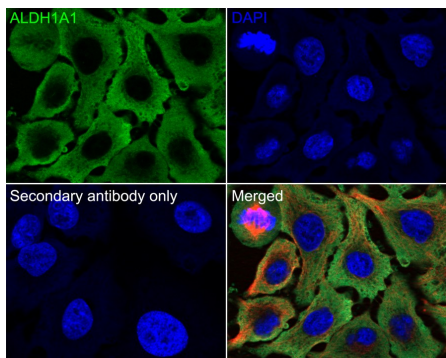
Predicted band size: 55 kDa
Observed band size: 50 kDa

Exposure time: 5 seconds; ECL: K1801;

4-20% SDS-PAGE gel.

Proteins were transferred to a PVDF membrane and blocked with 5% NFDM/TBST for 1 hour at room temperature. The primary antibody (EM1801-07) at 1/2,000 dilution was used in 5% NFDM/TBST at 4°C overnight. Goat Anti-Mouse IgG - HRP Secondary Antibody (HA1006) at 1/50,000 dilution was used for 1 hour at room temperature.

Fig3: Immunocytochemistry analysis of A549 cells labeling ALDH1A1 with Mouse anti-ALDH1A1 antibody (EM1801-07) at 1/100 dilution.



Cells were fixed in 4% paraformaldehyde for 20 minutes at room temperature, permeabilized with 0.1% Triton X-100 in PBS for 5 minutes at room temperature, then blocked with 1% BSA in 10% negative goat serum for 1 hour at room temperature. Cells were then incubated with Mouse anti-ALDH1A1 antibody (EM1801-07) at 1/100 dilution in 1% BSA in PBST overnight at 4 °C. Goat Anti-Mouse IgG H&L (iFluor™ 488, HA1125) was used as the secondary antibody at 1/1,000 dilution. PBS instead of the primary antibody was used as the secondary antibody only control. Nuclear DNA was labelled in blue with DAPI.

beta Tubulin (ET1602-4, red) was stained at 1/100 dilution overnight at +4°C. Goat Anti-Rabbit IgG H&L (iFluor™ 594, HA1122) were used as the secondary antibody at 1/1,000 dilution.

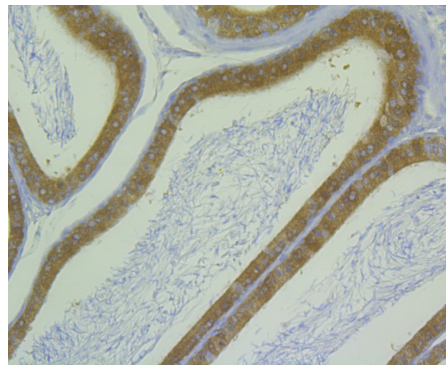


Fig4: Immunohistochemical analysis of paraffin-embedded rat epididymis tissue using anti-ALDH1A1 antibody. Counter stained with hematoxylin.

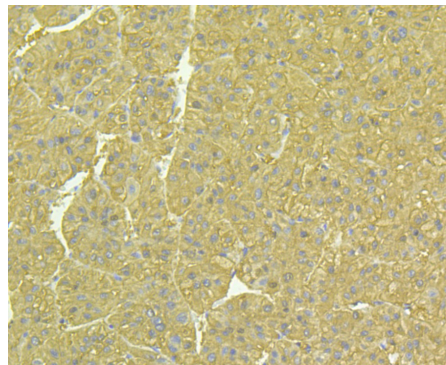


Fig5: Immunohistochemical analysis of paraffin-embedded human liver tissue using anti-ALDH1A1 antibody. Counter stained with hematoxylin.

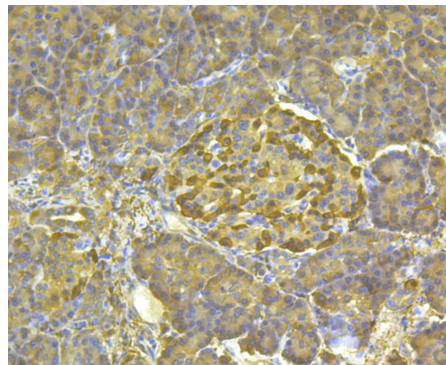


Fig6: Immunohistochemical analysis of paraffin-embedded human pancreas tissue using anti-ALDH1A1 antibody. Counter stained with hematoxylin.

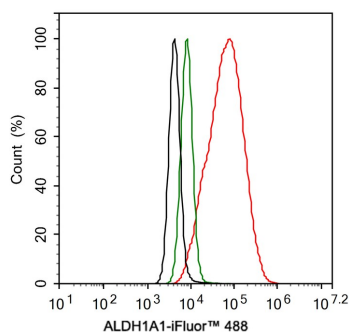


Fig7: Flow cytometric analysis of A549 cells labeling ALDH1A1.

Cells were fixed and permeabilized. Then stained with the primary antibody (EM1801-07, 1 μ g/mL) (red) compared with Mouse IgG1 Isotype Control (green). After incubation of the primary antibody at +4 $^{\circ}$ C for an hour, the cells were stained with a iFluor™ 488 conjugate-Goat anti-Mouse IgG Secondary antibody (HA1125) at 1/1,000 dilution for 30 minutes at +4 $^{\circ}$ C. Unlabelled sample was used as a control (cells without incubation with primary antibody; black).

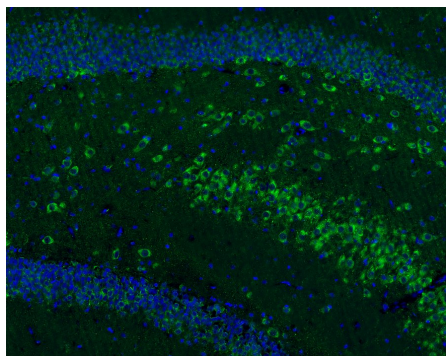


Fig8: Immunofluorescence analysis of frozen mouse hippocampus tissue labeling ALDH1A1 with Mouse anti-ALDH1A1 antibody (EM1801-07).

The tissues were blocked in 3% BSA for 30 minutes at room temperature, washed with PBS, and then probed with the primary antibody (EM1801-07, green) at 1/50 dilution overnight at 4 $^{\circ}$ C, washed with PBS. Goat Anti-Mouse IgG H&L (Alexa Fluor® 488) was used as the secondary antibody at 1/200 dilution. Nuclei were counterstained with DAPI (blue). Image acquisition was performed with KFBIO KF-FL-400 Scanner.

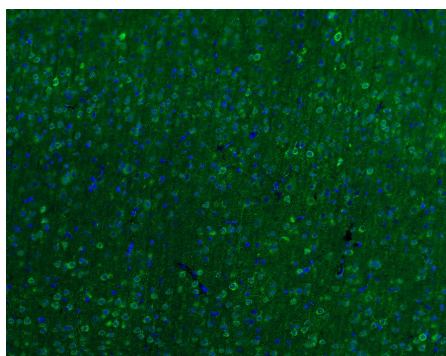


Fig9: Immunofluorescence analysis of frozen mouse cerebral cortex tissue labeling ALDH1A1 with Mouse anti-ALDH1A1 antibody (EM1801-07).

The tissues were blocked in 3% BSA for 30 minutes at room temperature, washed with PBS, and then probed with the primary antibody (EM1801-07, green) at 1/50 dilution overnight at 4 $^{\circ}$ C, washed with PBS. Goat Anti-Mouse IgG H&L (Alexa Fluor® 488) was used as the secondary antibody at 1/200 dilution. Nuclei were counterstained with DAPI (blue). Image acquisition was performed with KFBIO KF-FL-400 Scanner.

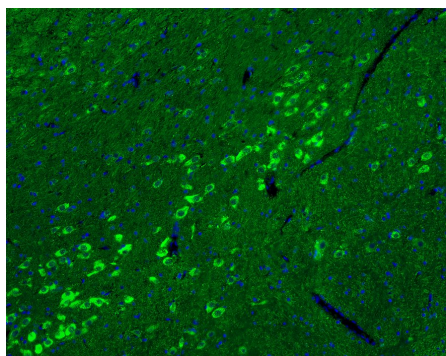


Fig10: Immunofluorescence analysis of frozen mouse substantia nigra tissue labeling ALDH1A1 with Mouse anti-ALDH1A1 antibody (EM1801-07).

The tissues were blocked in 3% BSA for 30 minutes at room temperature, washed with PBS, and then probed with the primary antibody (EM1801-07, green) at 1/50 dilution overnight at 4 $^{\circ}$ C, washed with PBS. Goat Anti-Mouse IgG H&L (Alexa Fluor® 488) was used as the secondary antibody at 1/200 dilution. Nuclei were counterstained with DAPI (blue). Image acquisition was performed with KFBIO KF-FL-400 Scanner.

Note: All products are "FOR RESEARCH USE ONLY AND ARE NOT INTENDED FOR DIAGNOSTIC OR THERAPEUTIC USE".

Background References

1. Xiao T et al. Molecular cloning and oxidative modification of human lens ALDH1A1: implication in impaired detoxification of lipid aldehydes. *Toxicol Environ Health Part A* 72:577-584(2009).
2. Koch M F et al. Structural, biochemical, and computational studies reveal the mechanism of selective aldehyde dehydrogenase 1A1 inhibition by cytotoxic duocarmycin analogues. *Angew Chem Int Ed Engl* 54:13550-13554(2015).

Hangzhou Huaan Biotechnology Co., Ltd.

Orders:0086-571-88062880

Technical:0086-571-89986345

Service mail:support@huabio.cn

 华安生物
HUAABIO
www.huabio.cn

Applications:WB=Western blot IHC-P=Immunohistochemistry (paraffin) IF-Cell=Immunofluorescence (Cell) IF-Tissue=Immunofluorescence (Tissue) FC=Flow cytometry IP=Immunoprecipitation