

# Anti-CD315 Antibody [4E9G7]

EM1712-27



**Product Type:** Mouse monoclonal IgG2b, primary antibodies

**Species reactivity:** Human

**Applications:** WB, IHC-P, FC

**Molecular Wt:** 98.6kDa

**Clone number:** 4E9G7

**Description:** Inhibits the binding of prostaglandin F2-alpha (PGF2-alpha) to its specific FP receptor, by decreasing the receptor number rather than the affinity constant. Functional coupling with the prostaglandin F2-alpha receptor seems to occur (By similarity).

**Immunogen:** Purified recombinant fragment of human CD315 (AA: extra 46-221) expressed in E. Coli.

**Positive control:** HL-60 cells, cervical cancer tissues

**Subcellular location:** Endoplasmic reticulum membrane. Golgi apparatus.

**Database links:** SwissProt: Q9P2B2 Human

**Recommended Dilutions:**

**WB** 1:500-1:2,000

**IHC-P** 1:50-1:200

**FC** 1:100-1:200

**Storage Buffer:** Purified antibody in PBS with 0.05% sodium azide.

**Storage Instruction:** 4°C; -20°C for long term storage.

**Purity:** Protein G affinity purified.

Hangzhou Huaan Biotechnology Co., Ltd.

Orders: 0086-571-88062880

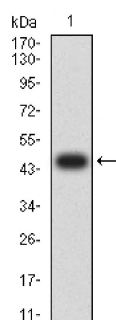
Technical: 0086-571-89986345

Service mail: support@huabio.cn

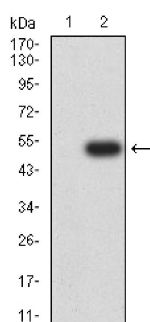
华安生物  
HUABIO  
www.huabio.cn

Applications: WB=Western blot IHC-P=Immunohistochemistry (paraffin) IF-Cell=Immunofluorescence (Cell) IF-Tissue=Immunofluorescence (Tissue) FC=Flow cytometry IP=Immunoprecipitation

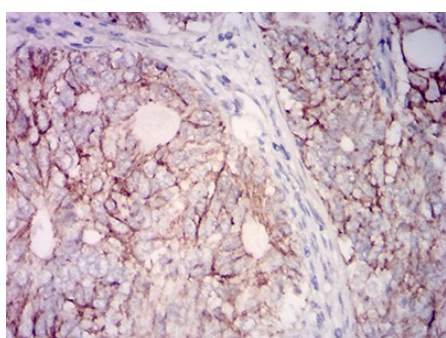
## Images



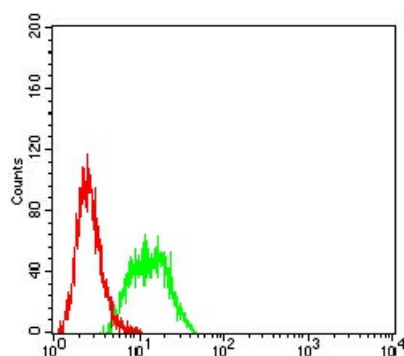
**Fig1:** Western blot analysis of CD315 against human CD315 (AA: extra 46-221) recombinant protein. Proteins were transferred to a PVDF membrane and blocked with 5% BSA in PBS for 1 hour at room temperature. The primary antibody (EM1712-27, 1/500) was used in 5% BSA at room temperature for 2 hours. Goat Anti-Mouse IgG - HRP Secondary Antibody at 1:5,000 dilution was used for 1 hour at room temperature.



**Fig2:** Western blot analysis of CD315 against HEK293 (1) and CD315 (AA: extra 46-221)-hlgGfc transfected HEK293 (2) cell lysate. Proteins were transferred to a PVDF membrane and blocked with 5% BSA in PBS for 1 hour at room temperature. The primary antibody (EM1712-27, 1/500) was used in 5% BSA at room temperature for 2 hours. Goat Anti-Mouse IgG - HRP Secondary Antibody at 1:5,000 dilution was used for 1 hour at room temperature.



**Fig3:** Immunohistochemical analysis of paraffin-embedded cervical cancer tissues using anti-CD315 antibody. The section was pre-treated using heat mediated antigen retrieval with Tris-EDTA buffer (pH 8.0) for 20 minutes. The tissues were blocked in 5% BSA for 30 minutes at room temperature, washed with ddH<sub>2</sub>O and PBS, and then probed with the primary antibody (EM1712-27, 1/100) for 30 minutes at room temperature. The detection was performed using an HRP conjugated compact polymer system. DAB was used as the chromogen. Tissues were counterstained with hematoxylin and mounted with DPX.



**Fig4:** Flow cytometric analysis of CD315 was done on HL-60 cells. The cells were fixed, permeabilized and stained with the primary antibody (EM1712-27, 1/100) (green). After incubation of the primary antibody at room temperature for an hour, the cells were stained with a Alexa Fluor 488-conjugated goat anti-Mouse IgG Secondary antibody at 1/500 dilution for 30 minutes. Unlabelled sample was used as a control (cells without incubation with primary antibody; red).

Hangzhou Huaan Biotechnology Co., Ltd.

Orders:0086-571-88062880

Technical:0086-571-89986345

Service mail:support@huabio.cn

华安生物  
HUABIO  
www.huabio.cn

---

**Note:** All products are "FOR RESEARCH USE ONLY AND ARE NOT INTENDED FOR DIAGNOSTIC OR THERAPEUTIC USE".

---

### Background References

1. Turk J Med Sci. 2018 Aug 16;48(4):724-729.
2. Int J Immunogenet. 2018 Dec;45(6):323-328.

**Hangzhou Huaan Biotechnology Co., Ltd.**

Orders:0086-571-88062880

Technical:0086-571-89986345

Service mail:support@huabio.cn

 华安生物  
HUAABIO  
www.huabio.cn

Applications:WB=Western blot IHC-P=Immunohistochemistry (paraffin) IF-Cell=Immunofluorescence (Cell) IF-Tissue=Immunofluorescence (Tissue) FC=Flow cytometry IP=Immunoprecipitation