

Anti-CRP Antibody [E8-G1]

EM1709-89



Product Type:	Mouse monoclonal IgG1, primary antibodies
Species reactivity:	Human
Applications:	WB, IHC-P, FC
Molecular Wt:	25 kDa
Clone number:	E8-G1

Description: C Reactive Protein(CRP) is produced by liver epithelial cells and is characterized by a cyclic pentameric structure and calcium-dependent ligand binding. IL-6 is the major inducer of human CRP gene, and IL-1 and steroids can enhance this induction. Testosterone is required for the expression of CRP transgene in vivo, whereas testosterone is not required for expression of the SAP gene. During the acute-phase response, cytokine C5a acts with IL-6 and/or IL-1b to promote upregulation of the CRP and SAP genes. Stat3 is involved in mouse CRP gene expression. CRP bind to Fc g R and opsonize particles for phagocytosis by human polymorphonuclear leukocytes. Opsonization of zymosan by CRP is mediated through Fc g RI, while Fc g RII and Fc g RIII are receptors for SAP. Therefore, CRP and SAP play critical roles in the host defense system.

Immunogen: Recombinant protein

Positive control: Human CRP recombinant protein, human liver cancer tissue, MCF-7.

Subcellular location: Secreted.

Database links: SwissProt: P02741 Human

Recommended Dilutions:

WB	1:500-1:1,000
IHC-P	1:100-1:500
FC	1:100-1:200

Storage Buffer: Purified antibody in PBS with 0.05% sodium azide.

Storage Instruction: 4℃; -20℃ for long term storage.

Purity: Protein A affinity purified.

Hangzhou Huaan Biotechnology Co., Ltd.

Orders:0086-571-88062880

Technical:0086-571-89986345

Service mail:support@huabio.cn

华安生物
HUABIO
www.huabio.cn

Applications:WB=Western blot IHC-P=Immunohistochemistry (paraffin) IF-Cell=Immunofluorescence (Cell) IF-Tissue=Immunofluorescence (Tissue) FC=Flow cytometry IP=Immunoprecipitation

Images

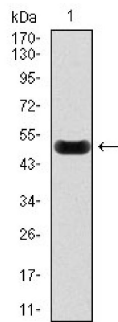


Fig1: Western blot analysis of CRP on human CRP recombinant protein using anti-CRP antibody at 1/1,000 dilution.

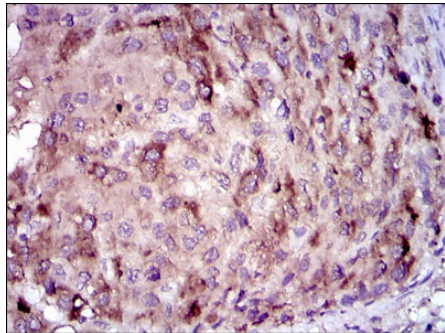


Fig2: Immunohistochemical analysis of paraffin-embedded human liver cancer tissue using anti-CRP antibody. Counter stained with hematoxylin.

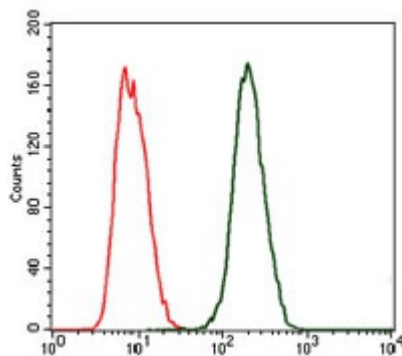


Fig3: Flow cytometric analysis of MCF-7 cells with CRP antibody at 1/100 dilution (green) compared with an unlabelled control (cells without incubation with primary antibody; red).

Note: All products are "FOR RESEARCH USE ONLY AND ARE NOT INTENDED FOR DIAGNOSTIC OR THERAPEUTIC USE".

Hangzhou Huaan Biotechnology Co., Ltd.

Orders: 0086-571-88062880

Technical: 0086-571-89986345

Service mail: support@huabio.cn

华安生物
HUABIO
www.huabio.cn

Applications: WB=Western blot IHC-P=Immunohistochemistry (paraffin) IF-Cell=Immunofluorescence (Cell) IF-Tissue=Immunofluorescence (Tissue) FC=Flow cytometry IP=Immunoprecipitation