

Images

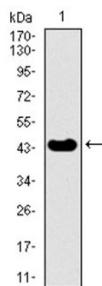


Fig1: Western blot analysis of TRIP6 on human TRIP6 recombinant protein using anti-TRIP6 antibody at 1/1,000 dilution.

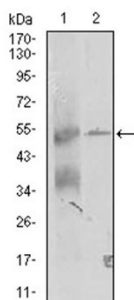


Fig2: Western blot analysis of TRIP6 on K562 (1) and A431 (2) cell lysate using anti-TRIP6 antibody at 1/1,000 dilution.

Note: All products are "FOR RESEARCH USE ONLY AND ARE NOT INTENDED FOR DIAGNOSTIC OR THERAPEUTIC USE".

Background References

1. Willier S et al. Defining the role of TRIP6 in cell physiology and cancer. *Biol Cell* 103(12):573-91 (2011).
2. Lai YJ et al. The adaptor protein TRIP6 antagonizes Fas-induced apoptosis but promotes its effect on cell migration. *Mol Cell Biol* 30(23):5582-96 (2010).

Hangzhou Huaan Biotechnology Co., Ltd.

Orders:0086-571-88062880

Technical:0086-571-89986345

Service mail:support@huabio.cn

华安生物
HUABIO
www.huabio.cn