

# Anti-ATG14L Antibody [C10-F7]

EM1708-11



<b>Product Type:</b>	Mouse monoclonal IgG1, primary antibodies
<b>Species reactivity:</b>	Human
<b>Applications:</b>	IHC-P
<b>Molecular Wt:</b>	55 kDa
<b>Clone number:</b>	C10-F7

**Description:** Required for both basal and inducible autophagy. Plays a role in autophagosome formation and MAP1LC3/LC3 conjugation to phosphatidylethanolamine. Promotes BECN1 translocation from the trans-Golgi network to autophagosomes. Enhances PIK3C3 activity in a BECN1-dependent manner.

**Immunogen:** Purified recombinant fragment of human ATG14L (AA: 43-303) expressed in E. Coli.

**Positive control:** Human testis tissues.

**Subcellular location:** Cytoplasm.

**Database links:** SwissProt: Q6ZNE5 Human

**Recommended Dilutions:**  
IHC-P 1:200-1:1,000

**Storage Buffer:** Purified antibody in PBS with 0.05% sodium azide.

**Storage Instruction:** Store at 4°C short term. Aliquot and store at -20°C long term. Avoid freeze/thaw cycles.

**Purity:** Protein A affinity purified.

Hangzhou Huaan Biotechnology Co., Ltd.

Orders: 0086-571-88062880

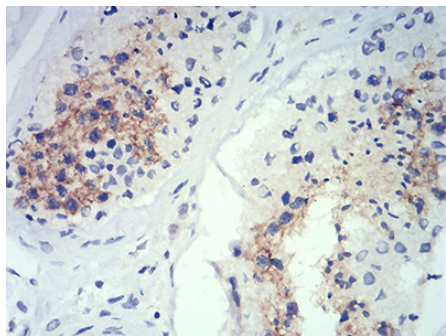
Technical: 0086-571-89986345

Service mail: support@huabio.cn

 华安生物  
HUABIO  
www.huabio.cn

Applications: WB=Western blot IHC-P=Immunohistochemistry (paraffin) IF-Cell=Immunofluorescence (Cell) IF-Tissue=Immunofluorescence (Tissue) FC=Flow cytometry IP=Immunoprecipitation

## Images



**Fig1:** Immunohistochemical analysis of paraffin-embedded human testis tissues using ATG14L mouse mAb with DAB staining.

**Note:** All products are “FOR RESEARCH USE ONLY AND ARE NOT INTENDED FOR DIAGNOSTIC OR THERAPEUTIC USE”.

## Background References

1. Liu J et al. Ad-HGF improves the cardiac remodeling of rat following myocardial infarction by upregulating autophagy and necroptosis and inhibiting apoptosis. *Am J Transl Res* 8:4605-4627 (2016).
2. Fogel AI et al. Role of membrane association and Atg14-dependent phosphorylation in beclin-1-mediated autophagy. *Mol Cell Biol* 33(18):3675-88 (2013).

Hangzhou Huaan Biotechnology Co., Ltd.

Orders:0086-571-88062880

Technical:0086-571-89986345

Service mail:support@huabio.cn

华安生物  
HUABIO  
www.huabio.cn

Applications:WB=Western blot IHC-P=Immunohistochemistry (paraffin) IF-Cell=Immunofluorescence (Cell) IF-Tissue=Immunofluorescence (Tissue) FC=Flow cytometry IP=Immunoprecipitation