

Anti-TRIM25 Antibody [B12-B5]

EM1707-34



| | |
|----------------------------|--|
| Product Type: | Mouse monoclonal IgG2b, primary antibodies |
| Species reactivity: | Human |
| Applications: | WB, IF-Cell, IHC-P, FC |
| Molecular Wt: | 71 kDa |
| Clone number: | B12-B5 |

Description: TRIM25 also named EFP. EFP (estrogen-responsive finger protein) is a transcription factor, the content of which is regulated by estrogen. It has been identified as a member of the RING finger family, a family of proteins containing a Zn²⁺ binding domain designated the C3HC4 or RING finger. EFP also contains two B box domains and a coiled-coil region (a transactivation domain), which are characteristic of a subgroup of the RING finger family. Estrogen regulates the growth, differentiation and function of target cells in a variety of tissues; however, few genes have been shown to be directly regulated by estrogen. It has been speculated that EFP may mediate estrogen activity in a signaling cascade in which estrogen-ER binding to the estrogen responsive element (ERE) downstream of the EFP gene upregulates EFP gene expression. The EFP gene product may then activate transcription of secondary estrogen responsive genes. Additional studies indicate that the EFP promoter may be regulated by multiple elements and their interacting factors.

Immunogen: Recombinant protein

Positive control: Human TRIM25 recombinant protein, TRIM25-hlgGfc transfected HEK293 cell lysate, MCF-7, K562, A549, MOLT4, Hela, human bladder cancer, human rectum cancer.

Subcellular location: Cytoplasm.

Database links: SwissProt: Q14258 Human

Recommended Dilutions:

| | |
|----------------|---------------|
| WB | 1:500-1:2,000 |
| IF-cell | 1:50-1:200 |
| IHC-P | 1:200-1:500 |
| FC | 1:100-1:200 |

Storage Buffer: Purified antibody in PBS with 0.05% sodium azide.

Storage Instruction: 4℃; -20℃ for long term storage.

Purity: Protein A affinity purified.

Hangzhou Huaan Biotechnology Co., Ltd.

Orders: 0086-571-88062880

Technical: 0086-571-89986345

Service mail: support@huabio.cn

华安生物
HUABIO
www.huabio.cn

Applications: WB=Western blot IHC-P=Immunohistochemistry (paraffin) IF-Cell=Immunofluorescence (Cell) IF-Tissue=Immunofluorescence (Tissue) FC=Flow cytometry IP=Immunoprecipitation

Images

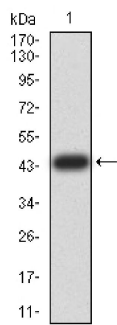


Fig1: Western blot analysis of TRIM25 on human TRIM25 recombinant protein using anti-TRIM25 antibody at 1/1,000 dilution.

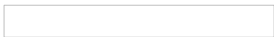


Fig2: Western blot analysis of TRIM25 on HEK293 (1) and TRIM25-hlgGfc transfected HEK293 (2) cell lysate using anti-TRIM25 antibody at 1/1,000 dilution.

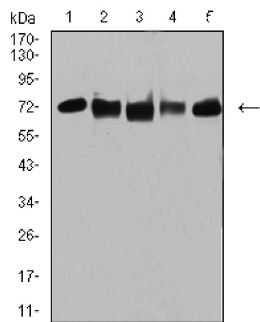


Fig3: Western blot analysis of TRIM25 on different cell lysate using anti-TRIM25 antibody at 1/1,000 dilution.

Positive control:

- Lane 1: MCF-7
- Lane 2: MCF-7
- Lane 3: K562
- Lane 4: A549
- Lane 5: MOLT4

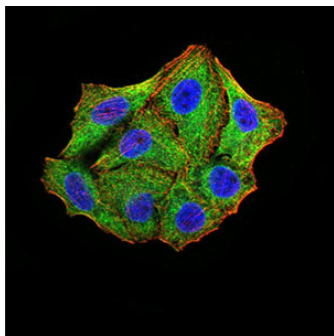


Fig4: ICC staining TRIM25 (green) and Actin filaments (red) in HeLa cells. The nuclear counter stain is DAPI (blue). Cells were fixed in paraformaldehyde, permeabilised with 0.25% Triton X100/PBS.

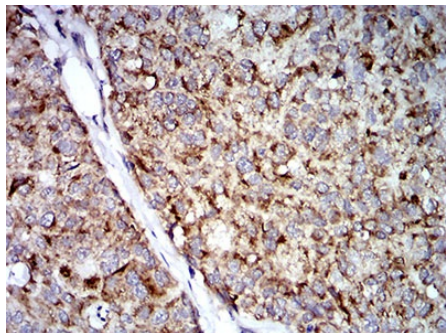


Fig5: Immunohistochemical analysis of paraffin-embedded human bladder cancer tissues using anti-TRIM25 antibody. Counter stained with hematoxylin.

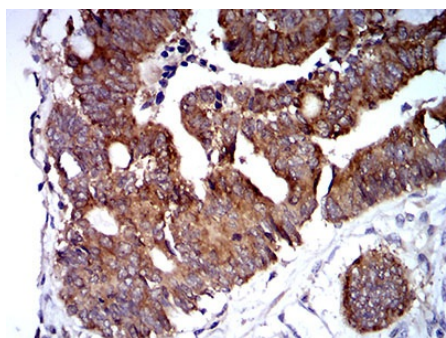


Fig6: Immunohistochemical analysis of paraffin-embedded human rectum cancer tissue using anti-TRIM25 antibody. Counter stained with hematoxylin.

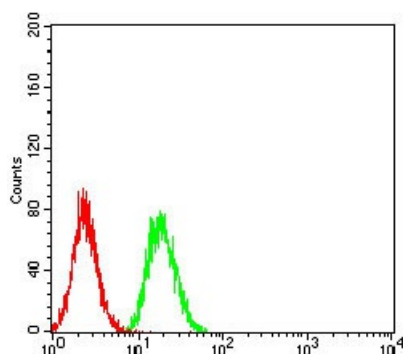


Fig7: Flow cytometric analysis of Hela cells with TRIM25 antibody at 1/100 dilution (green) compared with an unlabelled control (cells without incubation with primary antibody; red).

Note: All products are "FOR RESEARCH USE ONLY AND ARE NOT INTENDED FOR DIAGNOSTIC OR THERAPEUTIC USE".

Background References

1. Zhang, P. et al. TRIM25 has a dual function in the p53/Mdm2 circuit. *Oncogene* 1-10 (2015).
2. Mao H. et al. Nitroxoline shows antimyeloma activity by targeting the TRIM25/p53 axle. *Anticancer Drugs* 8(4):376-383 (2017).

Hangzhou Huaan Biotechnology Co., Ltd.

Orders:0086-571-88062880

Technical:0086-571-89986345

Service mail:support@huabio.cn

华安生物
HUABIO
www.huabio.cn

Applications:WB=Western blot IHC-P=Immunohistochemistry (paraffin) IF-Cell=Immunofluorescence (Cell) IF-Tissue=Immunofluorescence (Tissue) FC=Flow cytometry IP=Immunoprecipitation