

Anti-WTAP Antibody [B6-B6]

EM1706-68



| | |
|----------------------------|---|
| Product Type: | Mouse monoclonal IgG1, primary antibodies |
| Species reactivity: | Human, Monkey |
| Applications: | WB, IF-Cell, IHC-P, FC |
| Molecular Wt: | 55 kDa |
| Clone number: | B6-B6 |

Description: Wilms' tumor (WT) is an embryonal malignancy of the kidney that affects 1 in 10,000 infants and is observed in both sporadic and inherited forms. The Wilms' tumor protein (WT1) binds the DNA sequence GCGGGGGCG, a recognition element common to the early growth response (Egr) family of Zn²⁺ finger transcriptional activators, and functions as a transcriptional repressor. WTAP (Wilms tumor 1-associating protein) is a ubiquitously expressed nuclear protein that interacts with WT1 and may be involved in regulating mRNA splicing. WTAP is found in nuclear speckles where it regulates the G2/M cell cycle transition by binding to the 3' UTR of cyclin A2, thus enhancing its stability. Additionally, WTAP inhibits expression of WT1 target genes and is able to impair the ability of WT1 to bind DNA. Two isoforms of WTAP exist due to alternative splicing events.

Immunogen: Purified recombinant fragment of human WTAP (AA: 91-201) expressed in E. Coli.

Positive control: Human WTAP recombinant protein, WTAP-hIgGfc transfected HEK293 cell lysate, MCF-7, HeLa, K562, Hek293, A549, HepG2, Jurkat, Cos7, human cervical cancer tissue, human endometrial cancer tissue.

Subcellular location: Nucleus, nucleolus

Database links: SwissProt: Q15007 Human

Recommended Dilutions:

| | |
|----------------|---------------|
| WB | 1:500-1:2,000 |
| IF-cell | 1:200-1:1,000 |
| IHC-P | 1:200-1:1,000 |
| FC | 1:200-1:400 |

Storage Buffer: Purified antibody in PBS with 0.05% sodium azide.

Storage Instruction: 4°C; -20°C for long term storage.

Purity: Protein A affinity purified.

Hangzhou Huaan Biotechnology Co., Ltd.

Orders:0086-571-88062880

Technical:0086-571-89986345

Service mail:support@huabio.cn


www.huabio.cn

Images

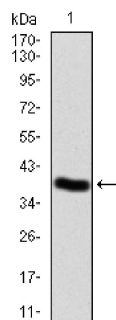


Fig1: Western blot analysis of WTAP on human WTAP recombinant protein using anti-WTAP antibody at 1/1,000 dilution.

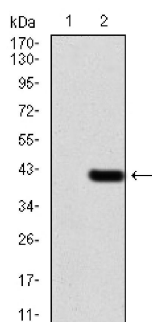


Fig2: Western blot analysis of WTAP on HEK293 (1) and WTAP-hlgFc transfected HEK293 (2) cell lysate using anti-WTAP antibody at 1/1,000 dilution.

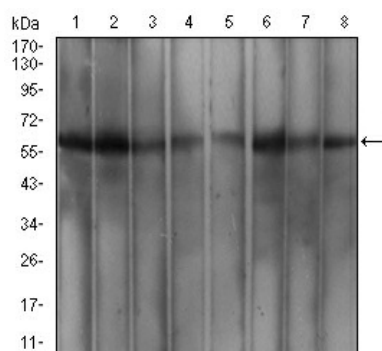


Fig3: Western blot analysis of WTAP on different cell lysate using anti-WTAP antibody at 1/1,000 dilution.

Positive control: Line1: MCF-7 Line2: Hela Line3: K562 Line4: Hek293 Line5: A549 Line6: HepG2 Line7: Jurkat Line8: Cos7

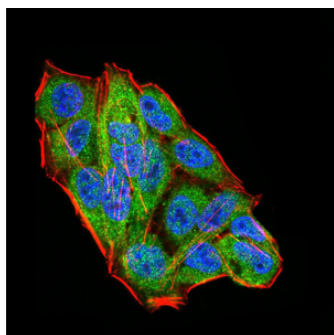


Fig4: ICC staining WTAP (green) and Actin filaments (red) in HeLa cells. The nuclear counter stain is DAPI (blue). Cells were fixed in paraformaldehyde, permeabilised with 0.25% Triton X100/PBS.

Hangzhou Huaan Biotechnology Co., Ltd.

Orders:0086-571-88062880

Technical:0086-571-89986345

Service mail:support@huabio.cn

华安生物
HUABIO
www.huabio.cn

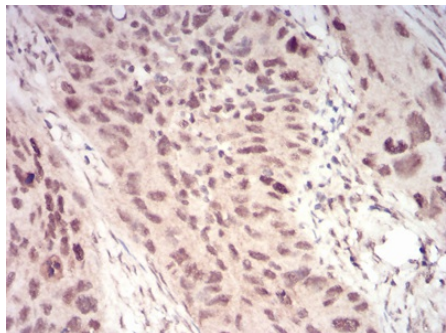


Fig5: Immunohistochemical analysis of paraffin-embedded human cervical cancer tissue using anti-WTAP antibody. Counter stained with hematoxylin.

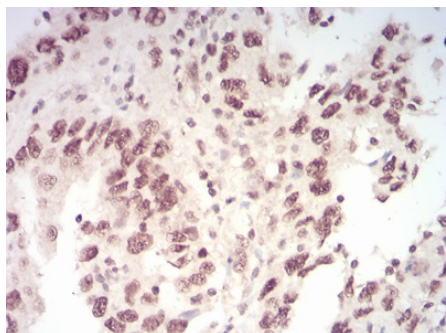


Fig6: Immunohistochemical analysis of paraffin-embedded human endometrial cancer tissue using anti-WTAP antibody. Counter stained with hematoxylin.

Note: All products are "FOR RESEARCH USE ONLY AND ARE NOT INTENDED FOR DIAGNOSTIC OR THERAPEUTIC USE".

Background References

1. Jo HJ et al. WTAP regulates migration and invasion of cholangiocarcinoma cells. *J Gastroenterol* 48(11):1271-82 (2013).
2. Jin DI et al. Expression and roles of Wilms' tumor 1-associating protein in glioblastoma. *Cancer Sci* 103(12):2102-9 (2012).

Hangzhou Huaan Biotechnology Co., Ltd.

Orders:0086-571-88062880

Technical:0086-571-89986345

Service mail:support@huabio.cn

华安生物
HUABIO
www.huabio.cn