

Anti-VIL1 Antibody [G11-5E]

EM1706-46



Product Type:	Mouse monoclonal IgG1, primary antibodies
Species reactivity:	Human
Applications:	WB, IF-Cell, IHC-P, FC
Molecular Wt:	93 kDa
Clone number:	G11-5E

Description: Caldesmon, Filamin 1, Nebulin and Villin are differentially expressed and regulated Actin binding proteins. Both muscular (CDh) and non-muscular (CDI) forms of Caldesmon have been identified and each has been shown to bind to Actin as well as to calmodulin and myosin. CDh is expressed predominantly on thin filaments in smooth muscle, whereas CDI is widely expressed in non-muscle tissues and cells. Filamin 1, which is ubiquitously expressed and exists as a homodimer, functions to crosslink Actin to filaments. Nebulin is a large filamentous protein specific to muscle tissue that may function as a ruler for filament length. Several isoforms of Nebulin are produced by alternative exon usage. Villin is Ca²⁺-regulated and is the major structural component of the brush border of absorptive cells.

Immunogen: Recombinant protein

Positive control: Human VIL1 recombinant protein, VIL1-hIgGfC transfected HEK293 cell lysate, SW620, Hela, human cervical cancer tissue.

Subcellular location: Cytoplasm, cytoskeleton.

Database links: SwissProt: P09327 Human

Recommended Dilutions:

WB	1:500-1:2,000
IF-cell	1:50-1:200
IHC-P	1:50-1:200
FC	1:50-1:100

Storage Buffer: Purified antibody in PBS with 0.05% sodium azide.

Storage Instruction: 4°C; -20°C for long term storage.

Purity: Protein A affinity purified.

Hangzhou Huaan Biotechnology Co., Ltd.

Orders:0086-571-88062880

Technical:0086-571-89986345

Service mail:support@huabio.cn

 华安生物
HUABIO
www.huabio.cn

Images

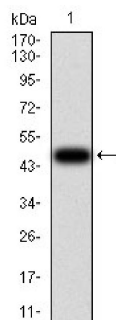


Fig1: Western blot analysis of Villin on human Villin recombinant protein using anti- Villin antibody at 1/1,000 dilution.

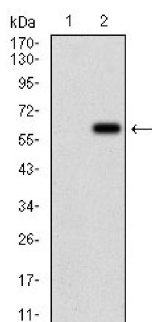


Fig2: Western blot analysis of Villin on HEK293 (1) and Villin - hlgGfc transfected HEK293 (2) cell lysate using anti- Villin antibody at 1/1,000 dilution.

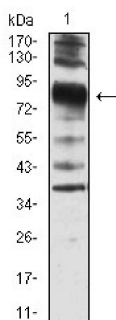


Fig3: Western blot analysis of Villin on SW620 cell lysate using anti- Villin antibody at 1/1,000 dilution.

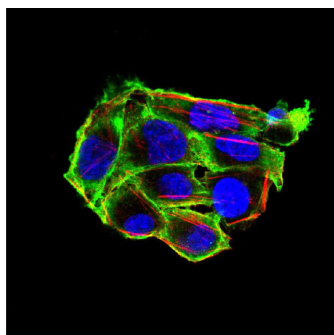


Fig4: ICC staining Villin (green) and Actin filaments (red) in HeLa cells. The nuclear counter stain is DAPI (blue). Cells were fixed in paraformaldehyde, permeabilised with 0.25% Triton X100/PBS.

Hangzhou Huaan Biotechnology Co., Ltd.

Orders:0086-571-88062880

Technical:0086-571-89986345

Service mail:support@huabio.cn

华安生物
HUABIO
www.huabio.cn

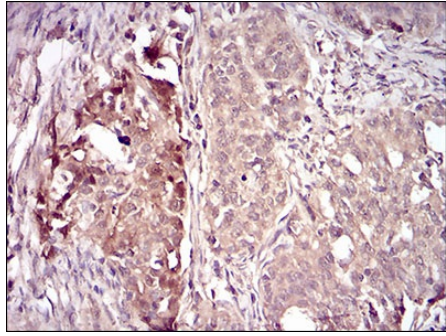


Fig5: Immunohistochemical analysis of paraffin-embedded human cervical cancer tissue using anti- Villin antibody. Counter stained with hematoxylin.

Note: All products are “FOR RESEARCH USE ONLY AND ARE NOT INTENDED FOR DIAGNOSTIC OR THERAPEUTIC USE”.

Background References

1. Xieraili M et al. Villin 1 is a predictive factor for the recurrence of high serum alpha-fetoprotein-associated hepatocellular carcinoma after hepatectomy. *Cancer Sci* 103(8):1493-501 (2012).
2. Nakamura E et al. Villin1, a diagnostic marker for endometrial adenocarcinoma with high grade nuclear atypia. *Cancer Biol Ther* 1;12(3):181-90 (2011).

Hangzhou Huaan Biotechnology Co., Ltd.

Orders:0086-571-88062880

Technical:0086-571-89986345

Service mail:support@huabio.cn

华安生物
HUABIO
www.huabio.cn