

Anti-Cytokeratin 5 Antibody [6D-4D]

EM1706-36



Product Type:	Mouse monoclonal IgG1, primary antibodies
Species reactivity:	Human, Mouse, Monkey
Applications:	WB, IHC-P, IF-Cell, FC
Molecular Wt:	62 kDa
Clone number:	6D-4D

Description: Cytokeratins comprise a diverse group of intermediate filament proteins (IFPs) that are expressed as pairs in both keratinized and non-keratinized epithelial tissue. Cytokeratins play a critical role in differentiation and tissue specialization and function to maintain the overall structural integrity of epithelial cells. Cytokeratins have been found to be useful markers of tissue differentiation which is directly applicable to the characterization of malignant tumors. Cytokeratin 5 is expressed in normal basal cells. Mutations of the cytokeratin 5 gene (KRT5) have been shown to result in the autosomal dominant disorder epidermolysis bullosa (EB).

Immunogen: Recombinant protein

Positive control: A431, 3T3-L1, COS7, HepG2, Hela, MCF-7, SK-Br-3, Lncap, human CK5 recombinant protein, human ovarian cancer tissue.

Subcellular location: Cytoplasm.

Database links: SwissProt: P13647 Human | Q922U2 Mouse

Recommended Dilutions:

WB	1:1,000-1:2,000
IF-cell	1:200-1:1000
IHC-P	1:50-1:200
FC	1:50-1:100

Storage Buffer: Purified antibody in PBS with 0.05% sodium azide.

Storage Instruction: 4°C; -20°C for long term storage.

Purity: Protein A affinity purified.

Hangzhou Huaan Biotechnology Co., Ltd.

Orders:0086-571-88062880

Technical:0086-571-89986345

Service mail:support@huabio.cn

华安生物
HUABIO
www.huabio.cn

Images

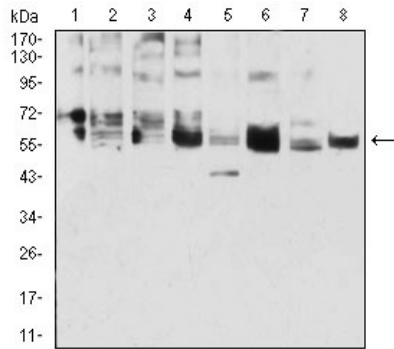


Fig1: Western blot analysis of CK5 on different cells lysates using anti-CK5 antibody at 1/1,000 dilution.

Positive control:

Line1: A431
 Line2: 3T3-L1
 Line3: COS7
 Line4: MCF-7
 Line5: SK-Br-3
 Line6: Hela
 Line7: Lncap
 Line8: HepG2

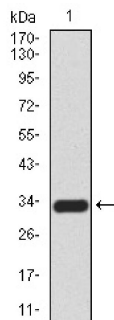


Fig2: Western blot analysis of CK5 on human CK5 recombinant protein using anti-CK5 antibody at 1/1,000 dilution.

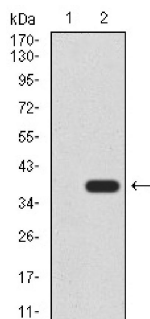


Fig3: Western blot analysis of CK5 on HEK293 (1) and CK5-hlgGfc transfected HEK293 (2) cell lysate using anti-CK5 antibody at 1/1,000 dilution.

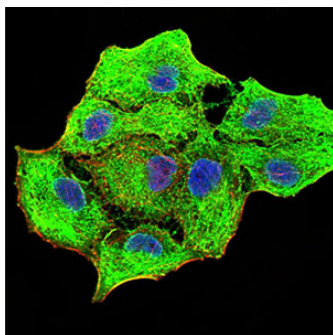


Fig4: ICC staining CK5 (green) and Actin filaments (red) in MCF-7 cells. The nuclear counter stain is DAPI (blue). Cells were fixed in paraformaldehyde, permeabilised with 0.25% Triton X100/PBS.

Hangzhou Huaan Biotechnology Co., Ltd.

Orders:0086-571-88062880

Technical:0086-571-89986345

Service mail:support@huabio.cn

华安生物
 HUABIO
 www.huabio.cn

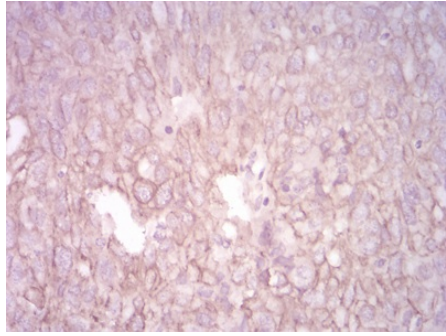


Fig5: Immunohistochemical analysis of paraffin-embedded human ovarian cancer tissue using anti-CK5 antibody. Counter stained with hematoxylin.

Note: All products are “FOR RESEARCH USE ONLY AND ARE NOT INTENDED FOR DIAGNOSTIC OR THERAPEUTIC USE”.

Background References

1. Leccia, F. et al. Cytometric and biochemical characterization of human breast cancer cells reveals heterogeneous myoepithelial phenotypes. *Cytometry. Part A : the journal of the International Society for Analytical Cytology*. 81: 960-72 (2012).
2. Lara, MF. et al. Inhibition of CD44 gene expression in human skin models, using self-delivery short interfering RNA administered by dissolvable microneedle arrays. *Hum. Gene Ther.*. 23: 816-23 (2012).

Hangzhou Huaan Biotechnology Co., Ltd.

Orders:0086-571-88062880

Technical:0086-571-89986345

Service mail:support@huabio.cn

华安生物
HUABIO
www.huabio.cn