

# Anti-BMP4 Antibody [1C-17]

EM1706-23



<b>Product Type:</b>	Mouse monoclonal IgG1, primary antibodies
<b>Species reactivity:</b>	Human, Rat
<b>Applications:</b>	WB, IF-Cell, FC
<b>Molecular Wt:</b>	47 kDa
<b>Clone number:</b>	1C-17

**Description:** Tumor growth factor, or TGF $\beta$ , is the prototypic member of a family of secreted proteins that regulate cellular proliferation and differentiation. Related proteins include the activins and the bone morphogenic proteins or BMPs. Like TGF $\beta$ , the BMPs signal through a heteromeric receptor complex (TGF $\beta$  R) composed of type I (TGF $\beta$  RI) and type II (TGF $\beta$  RII) receptors. Both the type I and the type II receptors contain an intrinsic serine/threonine kinase activity. Although signaling downstream of the TGF  $\beta$  R is poorly understood, several proteins have been implicated. Six TGF $\beta$ /BMP effector proteins, designated Smad1-6, may function as tumor suppressors. Smad proteins have been suggested to be transcription factors, acting similarly to the Stat family which associates directly with activated receptors and then translocates to the nucleus. Evidence supporting this assertion is drawn from the observation that Smad3 physically associates with the TGF $\beta$  R complex and that Smad1 is translocated to the nucleus 30-60 minutes after the addition of BMP-4.

**Immunogen:** Recombinant protein

**Positive control:** Human BMP4 recombinant protein, BMP4-hlgGfc transfected HEK293 cell lysate, A549, HepG2, C6, Hela.

**Subcellular location:** Secreted, extracellular space, extracellular matrix.

**Database links:** SwissProt: P12644 Human

**Recommended Dilutions:**

<b>WB</b>	1:200-1:1,000
<b>IF-cell</b>	1:50-1:200
<b>FC</b>	1:50-1:200

**Storage Buffer:** Purified antibody in PBS with 0.05% sodium azide.

**Storage Instruction:** 4°C; -20°C for long term storage.

**Purity:** Protein A affinity purified.

Hangzhou Huaan Biotechnology Co., Ltd.

Orders:0086-571-88062880

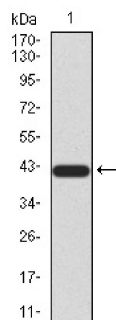
Technical:0086-571-89986345

Service mail:support@huabio.cn

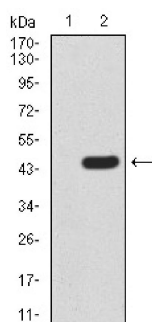
华安生物  
HUABIO  
www.huabio.cn

Applications:WB=Western blot IHC-P=Immunohistochemistry (paraffin) IF-Cell=Immunofluorescence (Cell) IF-Tissue=Immunofluorescence (Tissue) FC=Flow cytometry IP=Immunoprecipitation

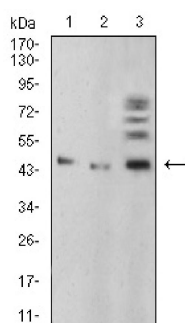
## Images



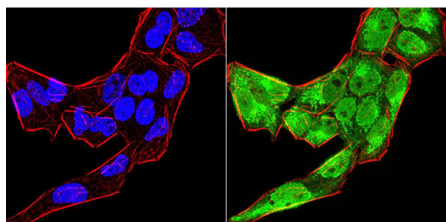
**Fig1:** Western blot analysis of BMP4 on human BMP4 recombinant protein using anti-BMP4 antibody at 1/1,000 dilution.



**Fig2:** Western blot analysis of BMP4 on HEK293 (1) and BMP4-hlgGfc transfected HEK293 (2) cell lysate using anti-BMP4 antibody at 1/1,000 dilution.



**Fig3:** Western blot analysis of BMP4 on A549 (1), HepG2 (2), and C6 (3) cell lysate using anti-BMP4 antibody at 1/1,000 dilution.



**Fig4:** ICC staining BMP4 (green) and Actin filaments (red) in HeLa cells. The nuclear counter stain is DAPI (blue). Cells were fixed in paraformaldehyde, permeabilised with 0.25% Triton X100/PBS.

Hangzhou Huaan Biotechnology Co., Ltd.

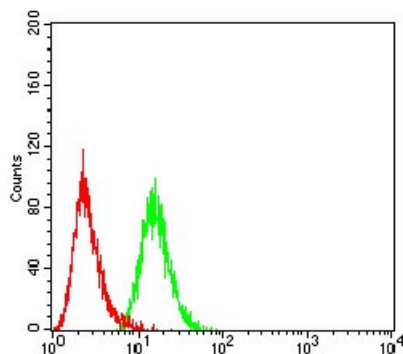
Orders:0086-571-88062880

Technical:0086-571-89986345

Service mail:support@huabio.cn

华安生物  
HUABIO  
www.huabio.cn

Applications:WB=Western blot IHC-P=Immunohistochemistry (paraffin) IF-Cell=Immunofluorescence (Cell) IF-Tissue=Immunofluorescence (Tissue) FC=Flow cytometry IP=Immunoprecipitation



**Fig5:** Flow cytometric analysis of HeLa cells with BMP4 antibody at 1/100 dilution (green) compared with an unlabelled control (cells without incubation with primary antibody; red).

**Note:** All products are “FOR RESEARCH USE ONLY AND ARE NOT INTENDED FOR DIAGNOSTIC OR THERAPEUTIC USE”.

### Background References

1. Yao C et al. MiRNA-133b promotes the proliferation of human Sertoli cells through targeting GLI3. *Oncotarget* 7:2201-19 (2016).
2. Gao Y et al. WT1 regulates the development of the posterior taste field. *Development* 141:2271-8 (2014).

Hangzhou Huaan Biotechnology Co., Ltd.

Orders:0086-571-88062880

Technical:0086-571-89986345

Service mail:support@huabio.cn

华安生物  
HUABIO  
www.huabio.cn

Applications:WB=Western blot IHC-P=Immunohistochemistry (paraffin) IF-Cell=Immunofluorescence (Cell) IF-Tissue=Immunofluorescence (Tissue) FC=Flow cytometry IP=Immunoprecipitation