

Anti-CDCP1 Antibody [A10F10]

EM1701-84



Product Type:	Mouse monoclonal IgG1, primary antibodies
Species reactivity:	Human, Mouse
Applications:	WB
Molecular Wt:	Predicted band size: 93 kDa
Clone number:	A10F10

Description: CDCP1 (CUB-domain-containing protein 1) contains three extracellular CUB domains, a transmembrane domain, and two putative cytoplasmic tyrosine phosphorylation sites. Phosphorylation of the gp140 and p80 proteins is mediated by Src family kinases at various tyrosine residues, including Tyr 734. PTP family members mediate the desphosphorylation of CDCP1. The conversion of gp140 to p80 prolongs the phosphorylation state, which may affect signaling in epithelial wounds. CDCP1 acts as a marker for hematopoietic cells and also exhibits high expression in metastatic colon and breast tumors.

Immunogen: Recombinant protein within Human CDCP1 aa 487-836 / 836.

Positive control: SW480 cell lysate, HCT 116 cell lysate, NIH/3T3 cell lysate.

Subcellular location: Cell membrane. Secreted.

Database links: SwissProt: Q9H5V8 Human | Q5U462 Mouse

Recommended Dilutions:

WB 1:1,000

Storage Buffer: PBS (pH7.4), 0.1% BSA, 40% Glycerol. Preservative: 0.05% Sodium Azide.

Storage Instruction: Shipped at 4°C. Store at +4°C short term (1-2 weeks). It is recommended to aliquot into single-use upon delivery. Store at -20°C long term.

Purity: Immunogen affinity purified.

Hangzhou Huaan Biotechnology Co., Ltd.

Orders:0086-571-88062880

Technical:0086-571-89986345

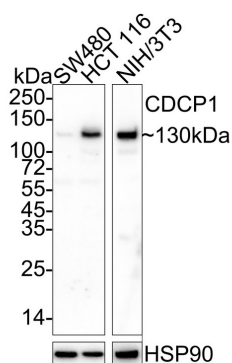
Service mail:support@huabio.cn

 华安生物
HUABIO
www.huabio.cn

Images

Fig1: Western blot analysis of CDCP1 on different lysates with Mouse anti-CDCP1 antibody (EM1701-84) at 1/1,000 dilution.

Lane 1: SW480 cell lysate
Lane 2: HCT 116 cell lysate
Lane 3: NIH/3T3 cell lysate (no heat)



Notice: no heat means the lysate is not boiled.

Lysates/proteins at 20 µg/Lane.

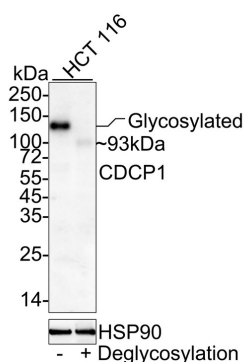
Predicted band size: 93 kDa
Observed band size: 130 kDa

Exposure time: Lane 1-2: 24 seconds; Lane 3: 10 seconds;
ECL: K1802;
4-20% SDS-PAGE gel.

Proteins were transferred to a PVDF membrane and blocked with 5% NFDm/TBST for 1 hour at room temperature. The primary antibody (EM1701-84) at 1/1,000 dilution was used in 5% NFDm/TBST at 4°C overnight. Goat Anti-Mouse IgG - HRP Secondary Antibody (HA1006) at 1/50,000 dilution was used for 1 hour at room temperature.

Fig2: Western blot analysis of CDCP1 on different lysates with Mouse anti-CDCP1 antibody (EM1701-84) at 1/1,000 dilution.

Lane 1: HCT 116 cell lysate
Lane 2: HCT 116 cell lysate treated with deglycosylation



Lysates/proteins at 14 µg/Lane.

Predicted band size: 93 kDa
Observed band size: 93/130 kDa (Glycosylated)

Exposure time: 3 minutes; ECL: K1802;

4-20% SDS-PAGE gel.

Proteins were transferred to a PVDF membrane and blocked with 5% NFDm/TBST for 1 hour at room temperature. The primary antibody (EM1701-84) at 1/1,000 dilution was used in 5% NFDm/TBST at 4°C overnight. Goat Anti-Mouse IgG - HRP Secondary Antibody (HA1006) at 1/50,000 dilution was used for 1 hour at room temperature.

Hangzhou Huaan Biotechnology Co., Ltd.

Orders:0086-571-88062880

Technical:0086-571-89986345

Service mail:support@huabio.cn

华安生物
HUABIO
www.huabio.cn

Note: All products are "FOR RESEARCH USE ONLY AND ARE NOT INTENDED FOR DIAGNOSTIC OR THERAPEUTIC USE".

Background References

1. Scherl-Mostageer M et al. Identification of a novel gene, CDCP1, overexpressed in human colorectal cancer. *Oncogene* 20:4402-4408 (2001).
2. Bhatt A.S et al. Adhesion signaling by a novel mitotic substrate of src kinases. *Oncogene* 24:5333-5343 (2005).

Hangzhou Huaan Biotechnology Co., Ltd.

Orders:0086-571-88062880

Technical:0086-571-89986345

Service mail:support@huabio.cn

 华安生物
HUAABIO
www.huabio.cn