

Anti-GRB2 Antibody [11-B11]

EM1701-41



Product Type:	Mouse monoclonal IgG2b, primary antibodies
Species reactivity:	Human, Mouse, Rat
Applications:	WB, IHC-P, IF-Cell
Molecular Wt:	Predicted band size: 25 kDa
Clone number:	11-B11

Description: Growth factor receptor-bound protein 2 also known as Grb2 is an adaptor protein involved in signal transduction/cell communication. In humans, the GRB2 protein is encoded by the GRB2 gene. The protein encoded by this gene binds receptors such as the epidermal growth factor receptor and contains one SH2 domain and two SH3 domains. Its two SH3 domains direct complex formation with proline-rich regions of other proteins, and its SH2 domain binds tyrosine phosphorylated sequences. This gene is similar to the sem-5 gene of *Caenorhabditis elegans*, which is involved in the signal transduction pathway.

Immunogen: Recombinant protein within Human GRB2 aa 21-217 / 217.

Positive control: 293T cell lysate, A431 cell lysate, NIH/3T3 cell lysate, PC-12 cell lysate, mouse testis tissue, rat testis tissue, rat brain tissue, MCF-7, HepG2.

Subcellular location: Endosome, Nucleus, Golgi apparatus, Cytoplasm.

Database links: SwissProt: P62993 Human | Q60631 Mouse | P62994 Rat

Recommended Dilutions:

WB	1:1,000
IF-Cell	1:50-1:200
IHC-P	1:50-1:200

Storage Buffer: 1*PBS (pH7.4), 0.2% BSA, 50% Glycerol. Preservative: 0.05% Sodium Azide.

Storage Instruction: Shipped at 4°C. Store at +4°C short term (1-2 weeks). It is recommended to aliquot into single-use upon delivery. Store at -20°C long term.

Purity: Protein G affinity purified.

Hangzhou Huaan Biotechnology Co., Ltd.

Orders:0086-571-88062880

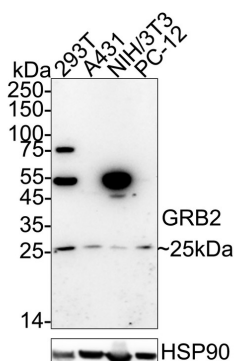
Technical:0086-571-89986345

Service mail:support@huabio.cn

 华安生物
HUABIO
www.huabio.cn

Images

Fig1: Western blot analysis of GRB2 on different lysates with Mouse anti-GRB2 antibody (EM1701-41) at 1/1,000 dilution.



Lane 1: 293T cell lysate (30 µg/Lane)
 Lane 2: A431 cell lysate (30 µg/Lane)
 Lane 3: NIH/3T3 cell lysate (30 µg/Lane)
 Lane 4: PC-12 cell lysate (30 µg/Lane)

Predicted band size: 25 kDa
 Observed band size: 25 kDa

Exposure time: 3 minutes; ECL: K1801;
 4-20% SDS-PAGE gel.

Proteins were transferred to a PVDF membrane and blocked with 5% NFDm/TBST for 1 hour at room temperature. The primary antibody (EM1701-41) at 1/1,000 dilution was used in 5% NFDm/TBST at 4°C overnight. Goat Anti-Mouse IgG - HRP Secondary Antibody (HA1006) at 1/50,000 dilution was used for 1 hour at room temperature.

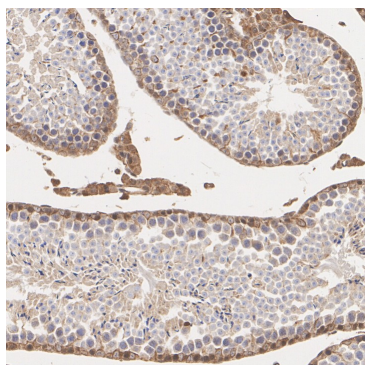


Fig2: Immunohistochemical analysis of paraffin-embedded mouse testis tissue with Mouse anti-GRB2 antibody (EM1701-41) at 1/200 dilution.

The section was pre-treated using heat mediated antigen retrieval with Tris-EDTA buffer (pH 9.0) for 20 minutes. The tissues were blocked in 1% BSA for 20 minutes at room temperature, washed with ddH₂O and PBS, and then probed with the primary antibody (EM1701-41) at 1/200 dilution for 1 hour at room temperature. The detection was performed using an HRP conjugated compact polymer system. DAB was used as the chromogen. Tissues were counterstained with hematoxylin and mounted with DPX.

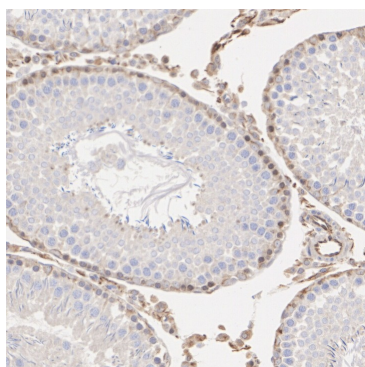


Fig3: Immunohistochemical analysis of paraffin-embedded rat testis tissue with Mouse anti-GRB2 antibody (EM1701-41) at 1/200 dilution.

The section was pre-treated using heat mediated antigen retrieval with Tris-EDTA buffer (pH 9.0) for 20 minutes. The tissues were blocked in 1% BSA for 20 minutes at room temperature, washed with ddH₂O and PBS, and then probed with the primary antibody (EM1701-41) at 1/200 dilution for 1 hour at room temperature. The detection was performed using an HRP conjugated compact polymer system. DAB was used as the chromogen. Tissues were counterstained with hematoxylin and mounted with DPX.

Hangzhou Huaan Biotechnology Co., Ltd.

Orders:0086-571-88062880

Technical:0086-571-89986345

Service mail:support@huabio.cn

华安生物
 HUABIO
 www.huabio.cn

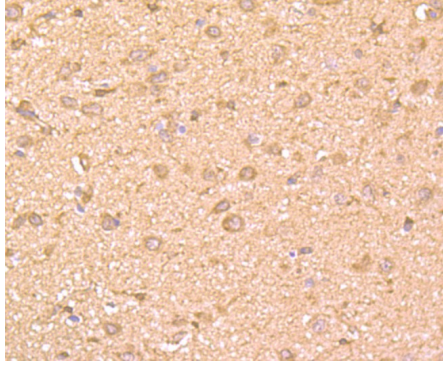


Fig4: Immunohistochemical analysis of paraffin-embedded rat brain tissue using anti-GRB2 antibody. Counter stained with hematoxylin.

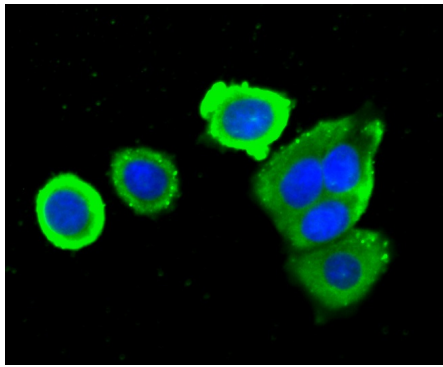


Fig5: ICC staining GRB2 (green) in MCF-7 cells. The nuclear counter stain is DAPI (blue). Cells were fixed in paraformaldehyde, permeabilised with 0.25% Triton X100/PBS.

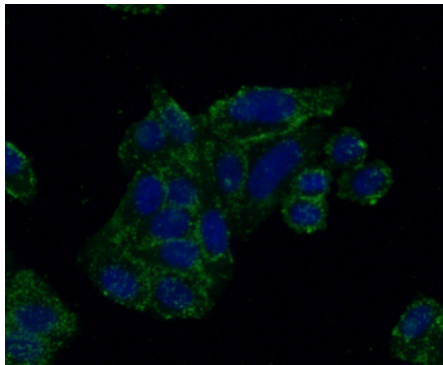


Fig6: ICC staining GRB2 (green) in HepG2 cells. The nuclear counter stain is DAPI (blue). Cells were fixed in paraformaldehyde, permeabilised with 0.25% Triton X100/PBS.

Note: All products are "FOR RESEARCH USE ONLY AND ARE NOT INTENDED FOR DIAGNOSTIC OR THERAPEUTIC USE".

Background References

1. Tanase CA. Histidine domain-protein tyrosine phosphatase interacts with Grb2 and GrpL. PLoS ONE 5:E14339-E14339 (2010).
2. Lowenstein EJ et al. The SH2 and SH3 domain-containing protein GRB2 links receptor tyrosine kinases to ras signaling. Cell. 70 (3): 431-42 (1992).

Hangzhou Huan Biotechnology Co., Ltd.

Orders:0086-571-88062880

Technical:0086-571-89986345

Service mail:support@huabio.cn

华安生物
HUABIO
www.huabio.cn