

Anti-Alpha 1 Acid Glycoprotein Antibody [A4-G2-A3] EM1510-42



Product Type:	Mouse monoclonal IgG1, primary antibodies
Species reactivity:	Human, Rat, Mouse
Applications:	WB, IHC-P, FC
Molecular Wt:	Predicted band size: 24 kDa
Clone number:	A4-G2-A3

Description: This gene encodes a key acute phase plasma protein. Because of its increase due to acute inflammation, this protein is classified as an acute-phase reactant. The specific function of this protein has not yet been determined; however, it may be involved in aspects of immunosuppression. Functions as transport protein in the blood stream. Binds various ligands in the interior of its beta-barrel domain. Also binds synthetic drugs and influences their distribution and availability in the body. Appears to function in modulating the activity of the immune system during the acute-phase reaction.

Immunogen: Recombinant protein within Human ORM1 aa 1-201 / 201.

Positive control: HepG2 cell lysate, HeLa cell lysate, THP-1 cell lysate, HCT 116 cell lysate, 293T cell lysate, NIH:OVCAR-3 cell lysate, human liver tissue lysate, rat liver tissue, human lung cancer tissue, human esophagus tissue, HepG2.

Subcellular location: Secreted.

Database links: SwissProt: P02763 Human | Q60590 Mouse | P02764 Rat

Recommended Dilutions:

WB	1:1,000
IHC-P	1:50-1:100
FC	1:50-1:100

Storage Buffer: 1*PBS (pH7.4), 0.2% BSA, 50% Glycerol. Preservative: 0.05% Sodium Azide.

Storage Instruction: Shipped at 4°C. Store at +4°C short term (1-2 weeks). It is recommended to aliquot into single-use upon delivery. Store at -20°C long term.

Purity: Protein G affinity purified.

Hangzhou Huaan Biotechnology Co., Ltd.

Orders:0086-571-88062880

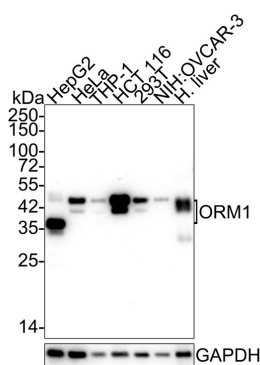
Technical:0086-571-89986345

Service mail:support@huabio.cn

华安生物
HUABIO
www.huabio.cn

Images

Fig1: Western blot analysis of Alpha 1 Acid Glycoprotein on different lysates with Mouse anti-Alpha 1 Acid Glycoprotein antibody (EM1510-42) at 1/1,000 dilution.



Lane 1: HepG2 cell lysate (20 µg/Lane)
 Lane 2: HeLa cell lysate (20 µg/Lane)
 Lane 3: THP-1 cell lysate (20 µg/Lane)
 Lane 4: HCT 116 cell lysate (20 µg/Lane)
 Lane 5: 293T cell lysate (20 µg/Lane)
 Lane 6: NIH:OVCAR-3 cell lysate (20 µg/Lane)
 Lane 7: Human liver tissue lysate (40 µg/Lane)

Predicted band size: 24 kDa
 Observed band size: 37/45 kDa

Exposure time: 1 minute 59 seconds;

4-20% SDS-PAGE gel.

Proteins were transferred to a PVDF membrane and blocked with 5% NFDM/TBST for 1 hour at room temperature. The primary antibody (EM1510-42) at 1/1,000 dilution was used in 5% NFDM/TBST at 4°C overnight. Goat Anti-Mouse IgG - HRP Secondary Antibody (HA1006) at 1/50,000 dilution was used for 1 hour at room temperature.

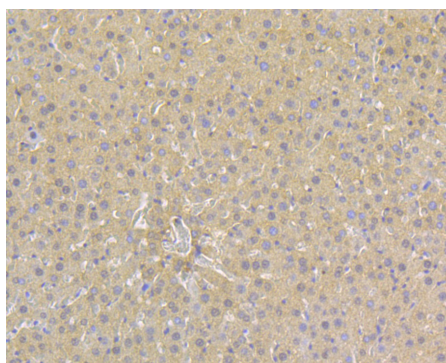


Fig2: Immunohistochemical analysis of paraffin-embedded rat liver tissue using anti-Alpha 1 Acid Glycoprotein antibody. Counter stained with hematoxylin.

Hangzhou Huaan Biotechnology Co., Ltd.

Orders:0086-571-88062880

Technical:0086-571-89986345

Service mail:support@huabio.cn

华安生物
 HUABIO
 www.huabio.cn

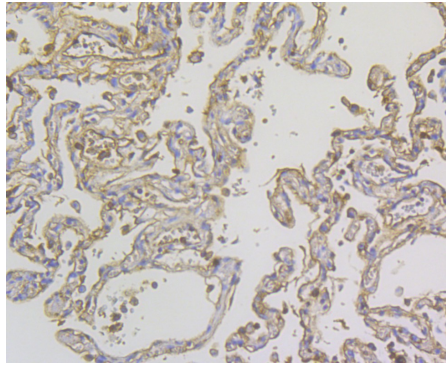


Fig3: Immunohistochemical analysis of paraffin-embedded human lung cancer tissue using anti-Alpha 1 Acid Glycoprotein antibody. Counter stained with hematoxylin.

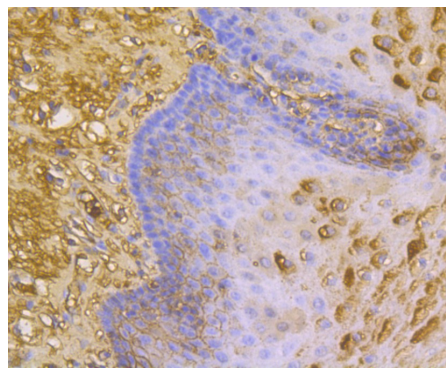


Fig4: Immunohistochemical analysis of paraffin-embedded human esophagus tissue using anti-Alpha 1 Acid Glycoprotein antibody. Counter stained with hematoxylin.

Note: All products are "FOR RESEARCH USE ONLY AND ARE NOT INTENDED FOR DIAGNOSTIC OR THERAPEUTIC USE".

Background References

1. Fitos I et al. Selective binding of imatinib to the genetic variants of human alpha1-acid glycoprotein. *Biochim Biophys Acta* 1760:1704-1712(2006).
2. Zsila F et al. The drug binding site of human alpha1-acid glycoprotein: insight from induced circular dichroism and electronic absorption spectra. *Biochim Biophys Acta* 1770:797-809(2007).

Hangzhou Huan Biotechnology Co., Ltd.

Orders:0086-571-88062880

Technical:0086-571-89986345

Service mail:support@huabio.cn

华安生物
HUABIO
www.huabio.cn