

Mouse IL-4 ELISA Instructions

Cat: EM0003

Content

	CAT	Volume
① CP (Coated Plate)	EM0003CP	96 well
② S (Standard)	EM0003S,S1-S7,S0	9 vial
③ DA (Detect Antibody)	EM0003DA	6 ml/bottle
④ SH (Streptavidin-HRP)	ESH01	12 ml/bottle
⑤ AB (Assay Buffer 1×)	EAB01	12 ml/bottle
⑥ TS (TMB Substrate)	ETS01	12 ml/bottle
⑦ SS (Stop Solution)	ESS01	12 ml/bottle
⑧ WB (Wash Buffer 10×)	EWB01	50 ml/bottle
⑨ SF (Sealer Film)	ESF01	6 piece

NOTE: After the kit is opened, the stabilization period of each content is 30 days, so please use the kit within 30 days after opening.

REAGENT PREPARATION

Washing Buffer (1×) Preparation

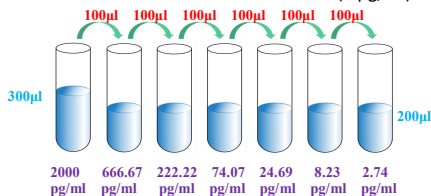
Pour entire contents (50 ml) of the **Washing Buffer Concentrate** (10×) into a clean 500 ml graduated cylinder. Bring to final volume of 500 ml with glass-distilled or deionized water. Transfer to a clean wash bottle and store at 2 to 25°C.

Standard Curve Preparation:

S1 to S7 and S0 is ready to use for serum and plasma.

Other sample type, prepare the standard curve with whatever buffer (SPB, Sample Prepared Buffer) is used to prepare the sample, such as cell culture supernatant, tissue grinding liquid, cell lysate, etc. Urine sample use AB (Assay Buffer) prepare standard curve.

The Mouse IL-4 Standard EM0003S 20000 pg/ml 30 μ l + 270 μ l SPB serves as the high standard (2000 pg/ml). Pipette 200 μ l of SPB into each tube. Use the high standard to produce a 1:2 dilution series. Mix each tube thoroughly before the next transfer. SPB serves as the zero standard (0 pg/ml).



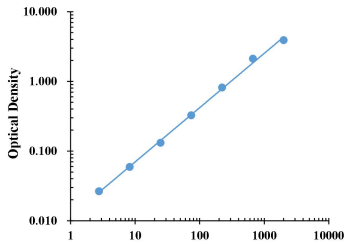
ASSAY PROCEDURE

Bring all reagents and samples to room temperature before use.

- ① Prepare all reagents and working standards as directed in the previous sections.
- ② Remove excess **CP** (Coated Plate) strips from the plate frame, return them to the foil pouch and reseal.
- ③ Add 50 μ l of **AB** (Assay Buffer) to each well.
- ④ Add 10 μ l of **Standard or sample** per well. Ensure reagent addition is uninterrupted and completed within 15 minutes.
- ⑤ Add 50 μ l of **DA** (Detect Antibody) to each well.
- ⑥ Cover with an **SF** (Sealer Film). Incubate at room temperature (18 to 25°C) for 1 hours on a microplate **shaker** set at 500 rpm.
- ⑦ Aspirate each well and **wash**, repeating the process four times. Wash by filling each well with **WB** (Washing Buffer 300 μ l). Complete removal of liquid at each step is essential to good performance. After the last wash, remove any remaining **WB** (Washing Buffer) by aspirating or decanting. Invert the plate and **blot** it against clean paper towels.
- ⑧ Add 100 μ l of **SH** (Streptavidin-HRP) to each well.
- ⑨ Cover with a new **SF** (Sealer Film). Incubate at room temperature (18 to 25°C) for 30 min on a microplate **shaker** set at 500 rpm.
- ⑩ Repeat aspiration/**wash** as in step 7.
- ⑪ Add 100 μ l of **TS** (TMB Substrate) to each well. Incubate for 5-30 minutes at room temperature.
- ⑫ Add 100 μ l of **SS** (Stop Solution) to each well.
- ⑬ Determine the optical density within 30 minutes, using microplate **reader** set to 450 nm corrected with 570 nm or 630 nm.

TYPICAL DATA

Mouse IL-4 Typical Standard



pg/ml	O.D.	Average	Corrected
0.00	0.0351	0.0332	0.0342
2.74	0.0571	0.0641	0.0606
8.23	0.0947	0.0921	0.0934
24.69	0.1691	0.1622	0.1657
74.07	0.3641	0.3542	0.3592
222.22	0.8632	0.8337	0.8485
666.67	2.1632	2.1331	2.1482
2000.00	3.9181	3.9331	3.9256

SENSITIVITY

The minimum detectable dose (MDD) of mouse IL-4 is typically less than 0.35 pg/ml.

The MDD was determined by adding two standard deviations to the mean optical density value of ten zero standard replicates and calculating the corresponding concentration.

PRECISION

Intra-assay Precision (Precision within an assay) Three samples of known concentration were tested twenty times on one plate to assess intra-assay precision.

Inter-assay Precision (Precision between assays)

Sample Number	Intra-assay Precision			Inter-assay Precision		
	S1	S2	S3	S1	S2	S3
22	22	22	22	6	6	6
Average (pg/ml)	25.6	135.5	374.7	21.1	102.4	438.7
Standard deviation	1.1	4.7	13.8	1.0	8.4	35.2
Coefficient of variation (%)	4.5	3.5	3.7	4.9	8.2	8.0

RECOVERY

The spike recovery was evaluated by spiking 3 levels of mouse IL-4 into health mouse serum sample. The un-spiked serum was used as blank in this experiment.

The recovery ranged from 99% to 120% with an overall mean recovery of 112%.

LINEARITY

To assess the linearity of the assay, five samples were spiked with high concentration of IL-4 in mouse serum and diluted with Sample Diluent to produce samples with values within the dynamic range of the assay.

The linearity ranged from 101% to 116% with an overall mean recovery of 105%.

SAMPLE VALUES

Serum/Plasma – Thirty samples from apparently healthy mice were evaluated for the presence of IL-4 in this assay. No medical histories were available for the donors.

Sample Matrix	Sample Evaluated	Range (pg/ml)	Detectable %	Mean of Detectable (pg/ml)
Serum	30	n.d.-0.37	4.2	0.37

n.d. = non-detectable. Samples measured below the sensitivity are considered to be non-detectable.