

# Anti-Lamin B1 Antibody

## RT1355



<b>Product Type:</b>	Rabbit polyclonal IgG, primary antibodies
<b>Species reactivity:</b>	Human, Mouse, Rat
<b>Applications:</b>	WB, IP, IF, IHC-P
<b>Molecular Wt:</b>	67 kDa

**Description:** A unique family of cysteine proteases has been described that differs in sequence, structure and substrate specificity from any previously described protease family. This family, termed Ced-3/ICE, function as key components of the apoptotic machinery and act to destroy specific target proteins which are critical to cellular longevity. Nuclear Lamins are critical to maintaining the integrity of the nuclear envelope and cellular morphology as components of the nuclear lamina, a fibrous layer on the nucleoplasmic side of the inner nuclear membrane which is thought to provide a framework for the nuclear envelope and may also interact with chromatin. B-type Lamins, such as Lamin B1, undergo a series of modifications, such as farnesylation and phosphorylation. Lamin B1 is a 586 amino acid protein that is encoded by a gene which, when mutated, is involved in the pathogenesis of autosomal dominant adult-onset leukodystrophy (ADLD), a disease characterized by cerebellar dysfunction and symmetric demyelination of the central nervous system.

**Immunogen:** Amino acids 401-490 mapping near the C-terminus of Lamin B1 of human origin.

**Positive control:** HeLa, Jurkat, Y79, human heart muscle tissue.

**Subcellular location:** Nucleus inner membrane

**Database links:** SwissProt: P20700 Human

**Recommended Dilutions:**

<b>WB</b>	1:100-1:1,000
<b>IP</b>	1-2 µg per 100-500 µg of total protein (1 ml of cell lysate)
<b>IF</b>	1:50-1:500
<b>IHC-P</b>	1:50-1:500

**Storage Buffer:** 1.0 ml of PBS with < 0.1% sodium azide and 0.1% gelatin.

**Storage Instruction:** Store at +4°C

**Purity:** Immunogen affinity purified.

Hangzhou Huaan Biotechnology Co., Ltd.

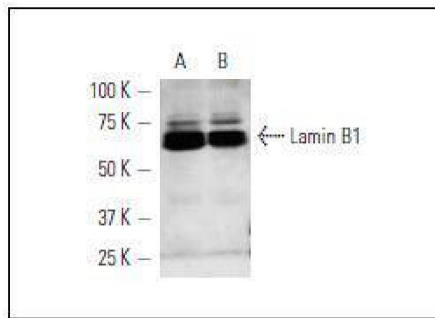
Orders:0086-571-88062880

Technical:0086-571-89986345

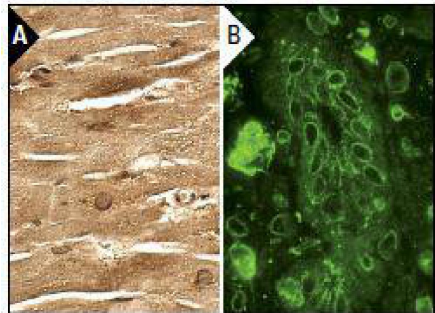
Service mail:support@huabio.cn

 华安生物  
HUABIO  
www.huabio.cn

## Images



**Fig1:** Western blot analysis of Lamin B1 expression in Jurkat (A) and Y79 (B) whole cell lysates. .



**Fig2:** Immunoperoxidase staining of formalin fixed, paraffin-embedded human heart muscle tissue showing nuclear envelope and cytoplasmic staining of myocytes (A). Immunofluorescence staining of methanol-fixed HeLa cells showing nuclear envelope localization (B). .

**Note:** All products are "FOR RESEARCH USE ONLY AND ARE NOT INTENDED FOR DIAGNOSTIC OR THERAPEUTIC USE".

## Background References

1. Sun, X.L., et al. 2011. Uncoupling protein 2 knockout exacerbates depression-like behaviors in mice via enhancing inflammatory response. *Neuroscience* 192: 507-514.
2. Otsuka, M., et al. 2011. Receptor for activated protein kinase C: requirement for efficient microRNA function and reduced expression in hepatocellular carcinoma. *PLoS ONE* 6: e24359.

Hangzhou Huaan Biotechnology Co., Ltd.

Orders:0086-571-88062880

Technical:0086-571-89986345

Service mail:support@huabio.cn

华安生物  
HUABIO  
www.huabio.cn