

# Anti-Lamin B1 Antibody

## R1508-1



<b>Product Type:</b>	Rabbit polyclonal IgG, primary antibodies
<b>Species reactivity:</b>	Human, Rat, Mouse
<b>Applications:</b>	WB
<b>Molecular Wt:</b>	Predicted band size: 66 kDa

**Description:** Lamin-B1 is a protein that in humans is encoded by the LMNB1 gene. The nuclear lamina consists of a two-dimensional matrix of proteins located next to the inner nuclear membrane. The lamin family of proteins make up the matrix and are highly conserved in evolution. During mitosis, the lamina matrix is reversibly disassembled as the lamin proteins are phosphorylated. Lamin proteins are thought to be involved in nuclear stability, chromatin structure and gene expression. Vertebrate lamins consist of two types, A and B. This gene encodes one of the two B type proteins, B1. Lamin B, along with heterochromatin, is anchored to the inner surface of the nuclear membrane by the lamin B receptor. LMNB1 has been shown to interact with Thymopoietin.

**Immunogen:** Synthetic peptide within Human Lamin B1 aa 1-50 / 586.

**Positive control:** Jurkat cell lysate, MCF-7 cell lysate, PC12 cell lysate, Wild-type HeLa whole cell lysate.

**Subcellular location:** Intermediate filament, Nucleus.

**Database links:** SwissProt: P20700 Human

**Recommended Dilutions:**

**WB** 1:1,000

**Storage Buffer:** 1\*PBS (pH7.4), 0.2% BSA, 40% Glycerol. Preservative: 0.05% Sodium Azide.

**Storage Instruction:** Store at +4°C after thawing. Aliquot store at -20°C or -80°C. Avoid repeated freeze / thaw cycles.

**Purity:** Immunogen affinity purified.

Hangzhou Huaan Biotechnology Co., Ltd.

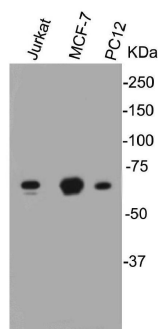
Orders:0086-571-88062880

Technical:0086-571-89986345

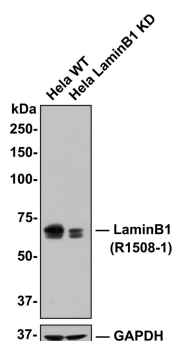
Service mail:support@huabio.cn

 华安生物  
HUABIO  
www.huabio.cn

## Images



**Fig1:** Western blot analysis on different cell lysates using anti-Lamin B1 rabbit polyclonal antibodies.



**Fig2:** All lanes: Western blot analysis of Lamin B1 with anti-Lamin B1 antibody (R1508-1) at 1/500 dilution.

Lane 1: Wild-type HeLa whole cell lysate (10  $\mu$ g).

Lane 2: Lamin B1 knockdown HeLa whole cell lysate (10  $\mu$ g).

R1508-1 was shown to specifically react with Lamin B1 in wild-type HeLa cells. Weakened band was observed when Lamin B1 knockdown sample was tested. Wild-type and Lamin B1 knockdown samples were subjected to SDS-PAGE. Proteins were transferred to a PVDF membrane and blocked with 5% NFD in TBST for 1 hour at room temperature. The primary antibody (R1508-1, 1/500) was used in 5% BSA at room temperature for 2 hours. Goat Anti-Rabbit IgG-HRP Secondary Antibody (HA1001) at 1:300,000 dilution was used for 1 hour at room temperature.

**Note:** All products are "FOR RESEARCH USE ONLY AND ARE NOT INTENDED FOR DIAGNOSTIC OR THERAPEUTIC USE".

## Background References

1. "Structural organization of the human gene (LMNB1) encoding nuclear lamin B1." Lin F., Worman H.J. *Genomics* 27:230-236(1995)
2. "Crystal structures of the coil 2B fragment and the globular tail domain of human lamin B1." Ruan J., Xu C., Bian C., Lam R., Wang J.P., Kania J., Min J., Zang J. *FEBS Lett.* 586:314-318(2012)

Hangzhou Huaan Biotechnology Co., Ltd.

Orders:0086-571-88062880

Technical:0086-571-89986345

Service mail:support@huabio.cn

华安生物  
HUABIO  
www.huabio.cn