

Anti-CD4 Antibody

R1211-1



Product Type:	Rabbit polyclonal IgG, primary antibodies
Species reactivity:	Human
Applications:	WB, IF-Cell
Molecular Wt:	Predicted band size: 51 kDa

Description: The CD4 gene encodes the T4 antigen, a glycoprotein of approximately 55 kDa, expressed on the surface of helper T lymphocytes. CD4 antigens are members of the immunoglobulin supergene family and are implicated as associative recognition elements in major histocompatibility complex class II-restricted immune responses. On T-lymphocytes they define the helper/inducer subset. CD4 antigens also serve as interleukin-15 receptors and bind to the HIV receptors, binding directly to the HIV envelope protein GP120.

Immunogen: Synthetic peptide corresponding to of Human CD4 aa 1-50 / 458.

Positive control: Daudi, K562, THP-1.

Subcellular location: Cell membrane

Database links: SwissProt: P01730 Human

Recommended Dilutions:

WB	1:1,000-1:2,000
IF-Cell	1:50

Storage Buffer: 1*PBS (pH7.4), 0.2% BSA, 40% Glycerol. Preservative: 0.05% Sodium Azide.

Storage Instruction: Shipped at 4°C. Store at +4°C short term (1-2 weeks). It is recommended to aliquot into single-use upon delivery. Store at -20°C long term.

Purity: Immunogen affinity purified.

Hangzhou Huaan Biotechnology Co., Ltd.

Orders: 0086-571-88062880

Technical: 0086-571-89986345

Service mail: support@huabio.cn

 华安生物
HUABIO
www.huabio.cn

Applications: WB=Western blot IHC-P=Immunohistochemistry (paraffin) IF-Cell=Immunofluorescence (Cell) IF-Tissue=Immunofluorescence (Tissue) FC=Flow cytometry IP=Immunoprecipitation

Images

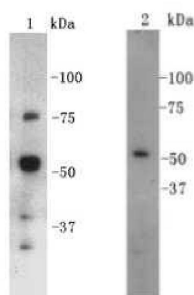


Fig1: Western blot analysis on K562 (1) and Daudi (2) cell lysates using anti-CD4 polyclonal antibody.

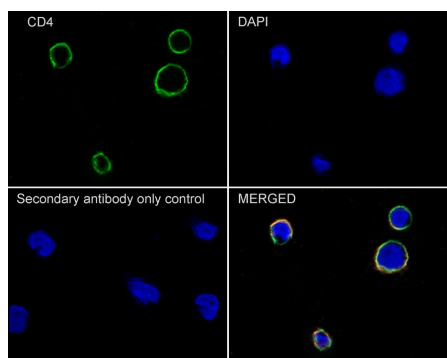


Fig2: Immunocytochemistry analysis of THP-1 cells labeling CD4 with Rabbit anti-CD4 antibody (R1211-1) at 1/50 dilution.

Cells were fixed in 4% paraformaldehyde for 10 minutes at 37 °C, permeabilized with 0.05% Triton X-100 in PBS for 20 minutes, and then blocked with 2% negative goat serum for 30 minutes at room temperature. Cells were then incubated with Rabbit anti-CD4 antibody (R1211-1) at 1/50 dilution in 2% negative goat serum overnight at 4 °C. Goat Anti-Rabbit IgG H&L (iFluor™ 488, HA1121) was used as the secondary antibody at 1/1,000 dilution. Nuclear DNA was labelled in blue with DAPI.

Beta tubulin (M1305-2, red) was stained at 1/100 dilution overnight at +4 °C. Goat Anti-Mouse IgG H&L (iFluor™ 594, HA1126) was used as the secondary antibody at 1/1,000 dilution.

Note: All products are "FOR RESEARCH USE ONLY AND ARE NOT INTENDED FOR DIAGNOSTIC OR THERAPEUTIC USE".

Background References

1. Parnes J.R., Hunkapiller T.; "L3T4 and the immunoglobulin gene superfamily: new relationships between the immune system and the nervous system."; Immunol. Rev. 100:109-127(1987).
2. Gorman S.D., Tourvieille B., Parnes J.R.; "Structure of the mouse gene encoding CD4 and an unusual transcript in brain."; Proc. Natl. Acad. Sci. U.S.A. 84:7644-7648(1987).
3. Rudd CE. CD4, CD8 and the TCR-CD3 complex: a novel class of protein-tyrosine kinase receptor. Immunol Today, 1990, 11(11):400-406.

Hangzhou Huaan Biotechnology Co., Ltd.

Orders: 0086-571-88062880

Technical: 0086-571-89986345

Service mail: support@huabio.cn

华安生物
HUABIO
www.huabio.cn

Applications: WB=Western blot IHC-P=Immunohistochemistry (paraffin) IF-Cell=Immunofluorescence (Cell) IF-Tissue=Immunofluorescence (Tissue) FC=Flow cytometry IP=Immunoprecipitation