

HRP Conjugated Mouse anti Rabbit IgG heavy chain(Fc) Antibody [A6-B8]



M1003-7

| | |
|----------------------------|---|
| Product Type: | Mouse monoclonal IgG1, primary antibodies |
| Species reactivity: | Rabbit |
| Applications: | WB, ELISA |
| Molecular Wt: | Predicted band size: 50 kDa |
| Clone number: | A6-B8 |

Description: The fundamental structure of IgG contains two identical heavy chains of about 50 kDa and two identical light chains of about 25 kDa, thus tetrameric quaternary structure. Light chain, which is usually same in a natural IgG molecule, includes κ chain and λ chain, but κ or λ antibody can exist in one body simultaneously. A heavy chain includes Fab- and Fc-Fragments. This antibody can recognize rabbit IgG Fc fragments of heavy chains.

Conjugate: HRP-conjugated

Immunogen: Rabbit IgG

Positive control: Rabbit serum.

Subcellular location: Serum plasma

Recommended Dilutions:

| | |
|--------------|---------|
| WB | 1:5,000 |
| ELISA | 1:5,000 |

Storage Buffer: 1*PBS (pH7.4), 0.2% BSA, 50% Glycerol.

Storage Instruction: Store at -20°C

Purity: Immunogen affinity purified.

Hangzhou HuaAn Biotechnology Co.,Ltd.

Orders: 0086-571-88062880

Technical:0086-571-89986345

Service mail: support@huabio.cn

www.huabio.cn

Applications: WB=Western blot IP=Immunoprecipitation IHC=Immunohistochemistry IF=Immunofluorescence FC=Flow cytometry



Images

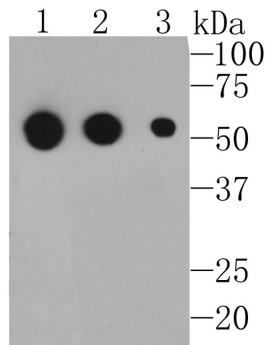


Fig1: M1003-7 was used at dilution 1/5000 (lane 1), 1/10000 (lane 2) and 1/50000 (lane 3) with rabbit IgG in WB.

All lanes proteins at 10 ng per lane.

Note: All products are "FOR RESEARCH USE ONLY AND ARE NOT INTENDED FOR DIAGNOSTIC OR THERAPEUTIC USE".