

Anti-Complement C3 (beta chain) Antibody [11-10]

M0809-14



Product Type:	Mouse monoclonal IgG2b, primary antibodies
Species reactivity:	Human
Applications:	WB, IF-Cell, FC
Molecular Wt:	70kDa
Clone number:	11-10

Description: C3 plays a central role in the activation of the complement system. Its processing by C3 convertase is the central reaction in both classical and alternative complement pathways. After activation C3b can bind covalently, via its reactive thioester, to cell surface carbohydrates or immune aggregates. Derived from proteolytic degradation of complement C3, C3a anaphylatoxin is a mediator of local inflammatory process. In chronic inflammation, acts as a chemoattractant for neutrophils. It induces the contraction of smooth muscle, increases vascular permeability and causes histamine release from mast cells and basophilic leukocytes. Acts as a chemoattractant for neutrophils in chronic inflammation. Adipogenic hormone that stimulates triglyceride (TG) synthesis and glucose transport in adipocytes, regulating fat storage and playing a role in postprandial TG clearance. Appears to stimulate TG synthesis via activation of the PLC, MAPK and AKT signaling pathways. Ligand for C5AR2. Promotes the phosphorylation, ARRB2-mediated internalization and recycling of C5AR2. Plasma. The acylation stimulating protein (ASP) is expressed in adipocytes and released into the plasma during both the fasting and postprandial periods.

Immunogen: Synthetic peptide within human Complement C3(β - chain) 480-560.

Positive control: Human plasma

Subcellular location: Secreted

Database links: SwissProt: P01024 Human

Recommended Dilutions:

WB 1:2,000

Storage Buffer: 1*PBS (pH7.4), 0.2% BSA, 40% Glycerol. Preservative: 0.05% Sodium Azide.

Storage Instruction: Store at +4°C after thawing. Aliquot store at -20°C or -80°C. Avoid repeated freeze / thaw cycles.

Purity: Protein A affinity purified.

Hangzhou Huaan Biotechnology Co., Ltd.

Orders:0086-571-88062880

Technical:0086-571-89986345

Service mail:support@huabio.cn

华安生物
HUABIO
www.huabio.cn

Images

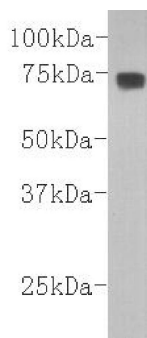


Fig1: Western blot analysis on human plasma lysates using anti-C3(β -chain) Mouse mAb (Cat. # M0809-14).

Note: All products are "FOR RESEARCH USE ONLY AND ARE NOT INTENDED FOR DIAGNOSTIC OR THERAPEUTIC USE".

Background References

1. Structure of C3b reveals conformational changes that underlie complement activity."Janssen B.J.C., Christodoulidou A., McCarthy A., Lambris J.D., Gros P.Nature 444:213-216(2006)
2. Disulfide bridges in human complement component C3b."Dolmer K., Sottrup-Jensen L.FEBS Lett. 315:85-90(1993)
3. Identification and quantification of N-linked glycoproteins using hydrazide chemistry, stable isotope labeling and mass spectrometry."Zhang H., Li X.-J., Martin D.B., Aebersold R. Nat. Biotechnol. 21:660-666(2003)

Hangzhou Huaan Biotechnology Co., Ltd.

Orders:0086-571-88062880

Technical:0086-571-89986345

Service mail:support@huabio.cn

华安生物
HUABIO
www.huabio.cn