

Anti-CCT2 Antibody [JE37-96]

HA722240



Product Type:	Recombinant Rabbit monoclonal IgG, primary antibodies
Species reactivity:	Human, Mouse, Rat
Applications:	WB, IP
Molecular Wt:	Predicted band size: 57 kDa
Clone number:	JE37-96

Description: T-complex protein 1 subunit beta is a protein that in humans is encoded by the CCT2 gene. This gene encodes a molecular chaperone that is member of the TRiC complex. This complex consists of two identical stacked rings, each containing eight different proteins. Unfolded polypeptides enter the central cavity of the complex and are folded in an ATP-dependent manner. The complex folds various proteins, including actin and tubulin. Alternate transcriptional splice variants of the gene described in this record have been observed but have not been thoroughly characterized. CCT2 (gene) has been shown to interact with PPP4C.

Immunogen: Synthetic peptide within Human CCT2 aa 500-535.

Positive control: HeLa cell lysate, NIH/3T3 cell lysate, C6 cell lysate, human brain tissue lysate, mouse brain tissue lysate, rat brain tissue lysate.

Subcellular location: Cytoplasm.

Database links: SwissProt: P78371 Human | P80314 Mouse | Q5XIM9 Rat

Recommended Dilutions:

WB	1:1,000
IP	1-2µg/sample

Storage Buffer: 1*TBS (pH7.4), 0.05% BSA, 40% Glycerol. Preservative: 0.05% Sodium Azide.

Storage Instruction: Store at +4°C after thawing. Aliquot store at -20°C. Avoid repeated freeze / thaw cycles.

Purity: Protein A affinity purified.

Hangzhou Huaan Biotechnology Co., Ltd.

Orders:0086-571-88062880

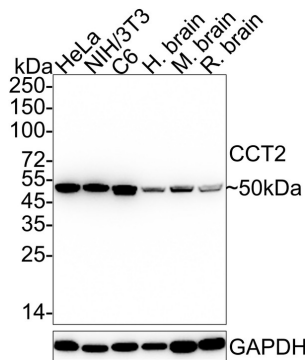
Technical:0086-571-89986345

Service mail:support@huabio.cn

 华安生物
HUABIO
www.huabio.cn

Images

Fig1: Western blot analysis of CCT2 on different lysates with Rabbit anti-CCT2 antibody (HA722240) at 1/1,000 dilution.



Lane 1: HeLa cell lysate (20 µg/Lane)
 Lane 2: NIH/3T3 cell lysate (20 µg/Lane)
 Lane 3: C6 cell lysate (20 µg/Lane)
 Lane 4: Human brain tissue lysate (40 µg/Lane)
 Lane 5: Mouse brain tissue lysate (40 µg/Lane)
 Lane 6: Rat brain tissue lysate (40 µg/Lane)

Predicted band size: 57 kDa
 Observed band size: 50 kDa

Exposure time: 21 seconds; ECL: K1801;

4-20% SDS-PAGE gel.

Proteins were transferred to a PVDF membrane and blocked with 5% NFDm/TBST for 1 hour at room temperature. The primary antibody (HA722240) at 1/1,000 dilution was used in 5% NFDm/TBST at 4°C overnight. Goat Anti-Rabbit IgG - HRP Secondary Antibody (HA1001) at 1/50,000 dilution was used for 1 hour at room temperature.

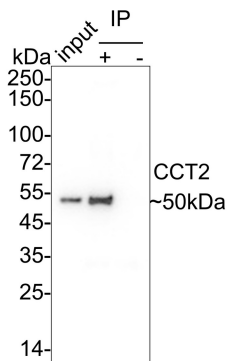


Fig2: CCT2 was immunoprecipitated from 0.2 mg HeLa cell lysate with HA722240 at 2 µg/25 µl agarose. Western blot was performed from the immunoprecipitate using HA722240 at 1/1,000 dilution. Anti-Rabbit IgG for IP Nano-secondary antibody (NBI01H) at 1/5,000 dilution was used for 1 hour at room temperature.

Lane 1: HeLa cell lysate (input)
 Lane 2: HA722240 IP in HeLa cell lysate
 Lane 3: Rabbit IgG instead of HA722240 in HeLa cell lysate

Blocking/Dilution buffer: 5% NFDm/TBST
 Exposure time: 5 seconds; ECL: K1801

Note: All products are "FOR RESEARCH USE ONLY AND ARE NOT INTENDED FOR DIAGNOSTIC OR THERAPEUTIC USE".

Background References

1. Ma X et al. CCT2 is an aggrephagy receptor for clearance of solid protein aggregates. Cell. 2022 Apr
2. Zhang Z et al. CCT2, a newly identified aggrephagy receptor in mammals, specifically mediates the autophagic clearance of solid protein aggregates. Autophagy. 2022 Jul

