

iFluor™ 594 Conjugated Anti-Beta tubulin Antibody [A1-A4-R]

HA600110F



Product Type:	Recombinant Mouse monoclonal IgG1, primary antibodies
Species reactivity:	Human, Mouse
Applications:	IF-Cell, IF-Tissue, FC
Molecular Wt:	Predicted band size: 50 kDa
Clone number:	A1-A4-R

Description: Tubulin is the major constituent of microtubules, a cylinder consisting of laterally associated linear protofilaments composed of alpha- and beta-tubulin heterodimers. Microtubules grow by the addition of GTP-tubulin dimers to the microtubule end, where a stabilizing cap forms. Below the cap, tubulin dimers are in GDP-bound state, owing to GTPase activity of alpha-tubulin.

Conjugate: iFluor™ 594, Amax: 587nm; Emax: 603nm.

Immunogen: Synthetic peptide within Human Beta tubulin aa 151-200 / 444.

Positive control: HeLa, NIH/3T3, human kidney tissue, mouse testis tissue, rat kidney tissue.

Subcellular location: Cytoplasm, Cytoskeleton, Microtubule.

Database links: SwissProt P07437 Human | P99024 Mouse | P69897 Rat

Recommended Dilutions:

IF-Cell	1:100
IF-Tissue	1:200
FC	1:1,000

Storage Buffer: Preservative: 0.02% Sodium azide Constituents: 30% Glycerol, 1% BSA, 68.98% PBS.

Storage Instruction: Store at +4°C after thawing. Aliquot store at -20°C. Avoid repeated freeze / thaw cycles.

Purity: Protein A affinity purified.

Hangzhou Huaan Biotechnology Co., Ltd.

Orders:0086-571-88062880

Technical:0086-571-89986345

Service mail:support@huabio.cn

 华安生物
HUABIO
www.huabio.cn

Images

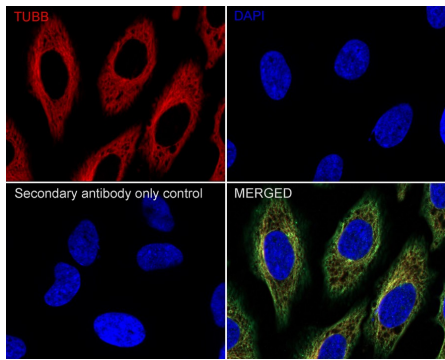


Fig1: Immunocytochemistry analysis of HeLa cells labeling Beta tubulin with Mouse anti-Beta tubulin antibody (HA600110F) at 1/100 dilution.

Cells were fixed in 4% paraformaldehyde for 20 minutes at room temperature, permeabilized with 0.1% Triton X-100 in PBS for 5 minutes at room temperature, then blocked with 1% BSA in 10% negative goat serum for 1 hour at room temperature. Cells were then incubated with Mouse anti-Beta tubulin antibody (HA600110F) at 1/100 dilution in 1% BSA in PBST overnight at 4 °C. Nuclear DNA was labelled in blue with DAPI.

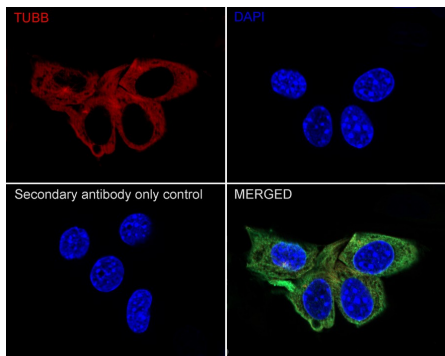


Fig2: Immunocytochemistry analysis of NIH/3T3 cells labeling Beta tubulin with Mouse anti-Beta tubulin antibody (HA600110F) at 1/100 dilution.

Cells were fixed in 4% paraformaldehyde for 20 minutes at room temperature, permeabilized with 0.1% Triton X-100 in PBS for 5 minutes at room temperature, then blocked with 1% BSA in 10% negative goat serum for 1 hour at room temperature. Cells were then incubated with Mouse anti-Beta tubulin antibody (HA600110F) at 1/100 dilution in 1% BSA in PBST overnight at 4 °C. Nuclear DNA was labelled in blue with DAPI.

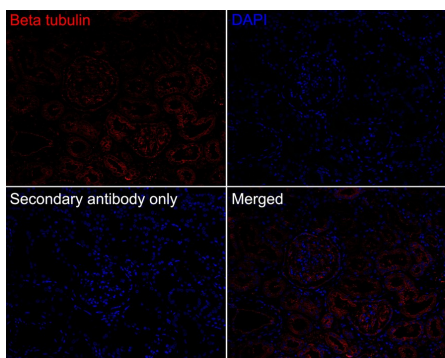


Fig3: Immunofluorescence analysis of paraffin-embedded human kidney tissue labeling Beta tubulin (HA600110F).

The section was pre-treated using heat mediated antigen retrieval with Tris-EDTA buffer (pH 9.0) for 20 minutes. The tissues were blocked in 10% negative goat serum for 1 hour at room temperature, washed with PBS. And then probed with the primary antibodies Beta tubulin (HA600110F, red) at 1/200 dilution overnight at 4 °C, washed with PBS. DAPI was used as nuclear counterstain.

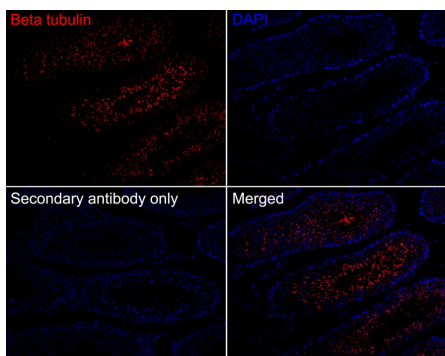


Fig4: Immunofluorescence analysis of paraffin-embedded mouse testis tissue labeling Beta tubulin (HA600110F).

The section was pre-treated using heat mediated antigen retrieval with Tris-EDTA buffer (pH 9.0) for 20 minutes. The tissues were blocked in 10% negative goat serum for 1 hour at room temperature, washed with PBS. And then probed with the primary antibodies Beta tubulin (HA600110F, red) at 1/200 dilution overnight at 4 °C, washed with PBS. DAPI was used as nuclear counterstain.

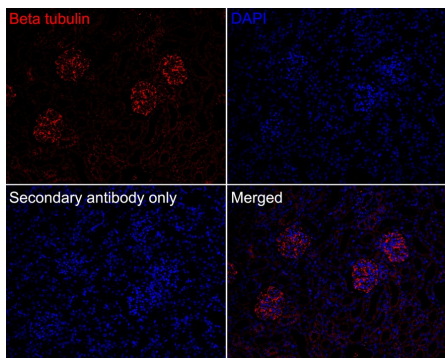


Fig5: Immunofluorescence analysis of paraffin-embedded rat kidney tissue labeling Beta tubulin (HA600110F).

The section was pre-treated using heat mediated antigen retrieval with Tris-EDTA buffer (pH 9.0) for 20 minutes. The tissues were blocked in 10% negative goat serum for 1 hour at room temperature, washed with PBS. And then probed with the primary antibodies Beta tubulin (HA600110F, red) at 1/200 dilution overnight at 4 °C, washed with PBS. DAPI was used as nuclear counterstain.

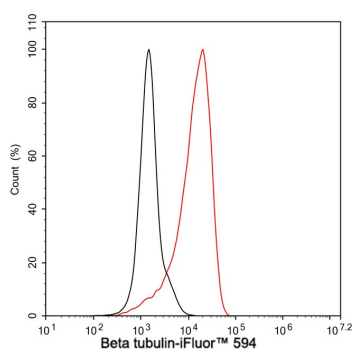


Fig6: Flow cytometric analysis of HeLa cells labeling Beta tubulin.

Cells were fixed and permeabilized. Then incubated for 1 hour at +4°C with Beta tubulin (HA600110F, red, 1µg/mL). Unlabelled sample was used as a control (cells without incubation with primary antibody; black).

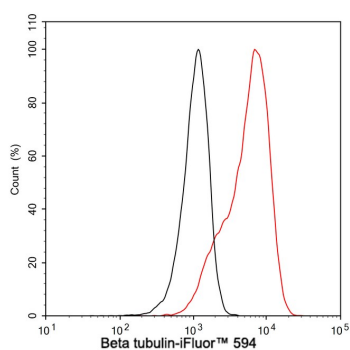


Fig7: Flow cytometric analysis of NIH/3T3 cells labeling Beta tubulin.

Cells were fixed and permeabilized. Then incubated for 1 hour at +4°C with Beta tubulin (HA600110F, red, 1µg/mL). Unlabelled sample was used as a control (cells without incubation with primary antibody; black).

Note: All products are "FOR RESEARCH USE ONLY AND ARE NOT INTENDED FOR DIAGNOSTIC OR THERAPEUTIC USE".

Background References

1. "Tumoral and tissue-specific expression of the major human beta-tubulin isotypes." Leandro-Garcia L.J., Leskela S., Landa I., Montero-Conde C., Lopez-Jimenez E., Leton R., . Cytoskeleton 67:214-223(2010)
2. "Five mouse tubulin isotypes and their regulated expression during development." Lewis S.A., Lee M.G.-S., Cowan N.J.J. Cell Biol. 101:852-861(1985)

Hangzhou Huaan Biotechnology Co., Ltd.

Orders: 0086-571-88062880

Technical: 0086-571-89986345

Service mail: support@huabio.cn

华安生物
HUABIO
www.huabio.cn