

# Anti-BTNL3 Antibody

## HA500238



<b>Product Type:</b>	Rabbit polyclonal IgG, primary antibodies
<b>Species reactivity:</b>	Human
<b>Applications:</b>	WB
<b>Molecular Wt:</b>	Predicted band size: 52 kDa.

**Description:** Butyrophilin-like 3 (BTNL3) is a member of the BTN/MOG Ig-superfamily which is coded by the BTNL3 gene, also known as COLF4100. BTNL3 is a 466 amino acid (aa) type I transmembrane protein that contains a 220 aa extracellular domain (ECD), a 21 aa helical transmembrane domain, and a 208 aa cytoplasmic domain. The ECD features both an IgV and IgC domain, which is commonplace in BTN/BTNL proteins, but the IgC domain is relatively weak. The ECD of human BTNL3 shares only 37% and 34% aa sequence identity with mouse (referred to as BTNL1) and rat, respectively. Human BTNL3 mRNA has been identified in many tissues including small intestine, colon, liver, lung, bone marrow and spleen tissue, and it is highly expressed in neutrophils. BTNL3 expression has also been found to be down-regulated in colon cancer tumors. The specific function of BTNL3, however, has yet to be fully elucidated. R&D in house data indicate that BTNL3 protein inhibits the secretion of IFN-gamma from anti-CD3 activated human T cells.

**Immunogen:** Synthetic peptide within human BTNL3 aa 440-450.

**Positive control:** HL-60 cell lysate, human small intestine tissue lysate.

**Subcellular location:** Membrane

**Database links:** SwissProt: Q6UXE8 Human

**Recommended Dilutions:**

**WB** 1:500

**Storage Buffer:** 1\*TBS (pH7.4), 0.2% BSA, 50% Glycerol. Preservative: 0.05% Sodium Azide.

**Storage Instruction:** Store at +4°C after thawing. Aliquot store at -20°C. Avoid repeated freeze / thaw cycles.

**Purity:** Immunogen affinity purified.

Hangzhou HuaAn Biotechnology Co.,Ltd.

Orders: 0086-571-88062880

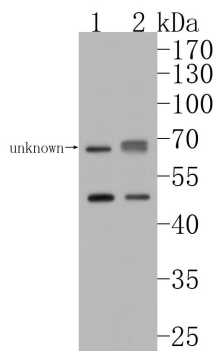
Technical:0086-571-89986345

Service mail: support@huabio.cn

www.huabio.cn



## Images



**Fig1:** Western blot analysis of BTNL3 on different lysates. Proteins were transferred to a PVDF membrane and blocked with 5% BSA in PBS for 1 hour at room temperature. The primary antibody (HA500238, 1/500) was used in 5% BSA at room temperature for 2 hours. Goat Anti-Rabbit IgG - HRP Secondary Antibody (HA1001) at 1:200,000 dilution was used for 1 hour at room temperature.

**Positive control:**

Lane 1: HL-60 cell lysate

Lane 2: Human small intestine tissue lysate

**Note:** All products are "FOR RESEARCH USE ONLY AND ARE NOT INTENDED FOR DIAGNOSTIC OR THERAPEUTIC USE".

## Background References

1. Jandke A. et. al. Butyrophilin-like proteins display combinatorial diversity in selecting and maintaining signature intraepithelial gammadelta T cell compartments. *Nat Commun.* 2020 Jul
2. Willcox CR. et. al. Butyrophilin-like 3 Directly Binds a Human Vgamma4(+) T Cell Receptor Using a Modality Distinct from Clonally-Restricted Antigen. *Immunity.* 2019 Nov