

Anti-Glucosidase 2 subunit beta Antibody

HA500152



Product Type:	Rabbit polyclonal IgG, primary antibodies
Species reactivity:	Human, Rat
Applications:	WB, IF-Cell, IHC-P, FC
Molecular Wt:	Predicted band size: 59 kDa.

Description: This gene encodes the beta-subunit of glucosidase II, an N-linked glycan-processing enzyme in the endoplasmic reticulum. The encoded protein is an acidic phosphoprotein known to be a substrate for protein kinase C. Mutations in this gene have been associated with the autosomal dominant polycystic liver disease. Alternative splicing results in multiple transcript variants. Regulatory subunit of glucosidase II that cleaves sequentially the 2 innermost alpha-1,3-linked glucose residues from the Glc(2)Man(9)GlcNAc(2) oligosaccharide precursor of immature glycoproteins. Required for efficient PKD1/Polycystin-1 biogenesis and trafficking to the plasma membrane of the primary cilia (By similarity).

Immunogen: Recombinant protein within human Glucosidase 2 subunit beta aa 30-230.

Positive control: Hela cell lysate, Jurkat cell lysate, A431 cell lysate, rat kidney tissue lysate, rat liver tissue lysate, human liver tissue, human kidney tissue, Hela, SiHa.

Subcellular location: Endoplasmic reticulum.

Database links: SwissProt: P14314 Human

Recommended Dilutions:

WB	1:1,000-1:2,000
IF-Cell	1:200
IHC-P	1:100-1:500
FC	1:500-1:1,000

Storage Buffer: 1*TBS (pH7.4), 0.2% BSA, 50% Glycerol. Preservative: 0.05% Sodium Azide.

Storage Instruction: Store at +4°C after thawing. Aliquot store at -20°C. Avoid repeated freeze / thaw cycles.

Purity: Immunogen affinity purified.

Hangzhou Huaan Biotechnology Co., Ltd.

Orders:0086-571-88062880

Technical:0086-571-89986345

Service mail:support@huabio.cn

华安生物
HUABIO
www.huabio.cn

Images

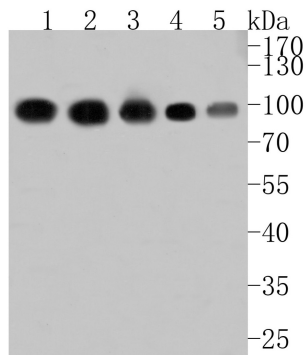


Fig1: Western blot analysis of Glucosidase 2 subunit beta on different lysates. Proteins were transferred to a PVDF membrane and blocked with 5% BSA in PBS for 1 hour at room temperature. The primary antibody (HA500152, 1/1,000) was used in 5% BSA at room temperature for 2 hours. Goat Anti-Rabbit IgG - HRP Secondary Antibody (HA1001) at 1:200,000 dilution was used for 1 hour at room temperature.

Positive control:

Lane 1: Hela cell lysate
 Lane 2: Jurkat cell lysate
 Lane 3: A431 cell lysate
 Lane 4: Rat kidney tissue lysate
 Lane 5: Rat liver tissue lysate

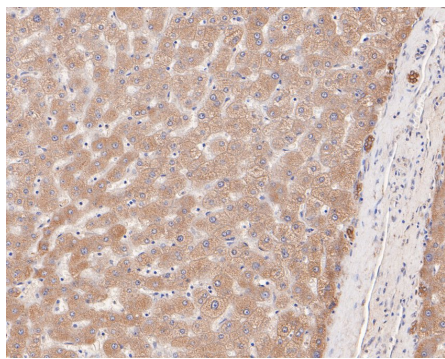


Fig2: Immunohistochemical analysis of paraffin-embedded human liver tissue using anti-Glucosidase 2 subunit beta antibody. The section was pre-treated using heat mediated antigen retrieval with Tris-EDTA buffer (pH 8.0-8.4) for 20 minutes. The tissues were blocked in 5% BSA for 30 minutes at room temperature, washed with ddH₂O and PBS, and then probed with the primary antibody (HA500152, 1/400) for 30 minutes at room temperature. The detection was performed using an HRP conjugated compact polymer system. DAB was used as the chromogen. Tissues were counterstained with hematoxylin and mounted with DPX.

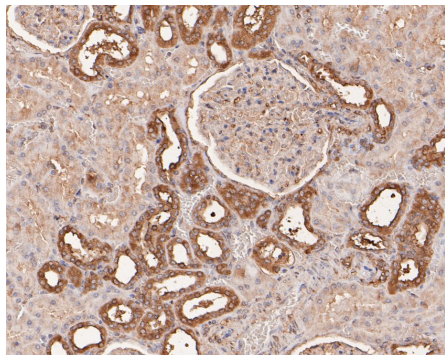


Fig3: Immunohistochemical analysis of paraffin-embedded human kidney tissue using anti-Glucosidase 2 subunit beta antibody. The section was pre-treated using heat mediated antigen retrieval with Tris-EDTA buffer (pH 8.0-8.4) for 20 minutes. The tissues were blocked in 5% BSA for 30 minutes at room temperature, washed with ddH₂O and PBS, and then probed with the primary antibody (HA500152, 1/400) for 30 minutes at room temperature. The detection was performed using an HRP conjugated compact polymer system. DAB was used as the chromogen. Tissues were counterstained with hematoxylin and mounted with DPX.

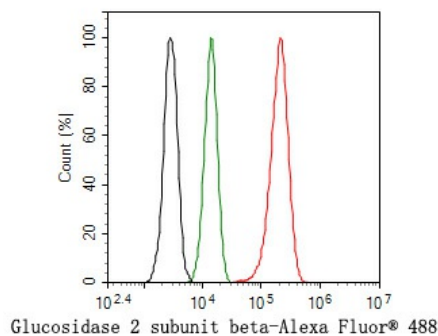


Fig4: Flow cytometric analysis of Hela cells labeling Glucosidase 2 subunit beta.

Cells were fixed and permeabilized. Then stained with the primary antibody (HA500152, 1 μ g/ml) (red) compared with Rabbit IgG Isotype Control (green). After incubation of the primary antibody at +4 $^{\circ}$ C for an hour, the cells were stained with a Alexa Fluor[®] 488 conjugate-Goat anti-Rabbit IgG Secondary antibody at 1/1,000 dilution for 30 minutes at +4 $^{\circ}$ C. Unlabelled sample was used as a control (cells without incubation with primary antibody; black).

Hangzhou Huan Biotechnology Co., Ltd.

Orders:0086-571-88062880

Technical:0086-571-89986345

Service mail:support@huabio.cn

华安生物
HUABIO
www.huabio.cn

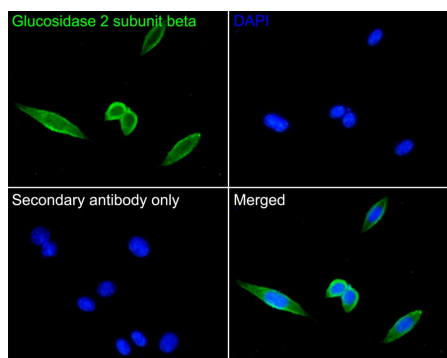


Fig5: Immunocytochemistry analysis of SiHa cells labeling Glucosidase 2 subunit beta with Rabbit anti-Glucosidase 2 subunit beta antibody (HA500152) at 1/200 dilution.

Cells were fixed in 4% paraformaldehyde for 10 minutes at 37 °C, permeabilized with 0.05% Triton X-100 in PBS for 20 minutes, and then blocked with 2% negative goat serum for 30 minutes at room temperature. Cells were then incubated with Rabbit anti-Glucosidase 2 subunit beta antibody (HA500152) at 1/200 dilution in 2% negative goat serum overnight at 4 °C. Goat Anti-Rabbit IgG H&L (iFluor™ 488, HA1121) was used as the secondary antibody at 1/1,000 dilution. PBS instead of the primary antibody was used as the secondary antibody only control. Nuclear DNA was labelled in blue with DAPI.

Note: All products are “FOR RESEARCH USE ONLY AND ARE NOT INTENDED FOR DIAGNOSTIC OR THERAPEUTIC USE”.

Background References

1. Huang R. et. al. PRKCSH Alternative Splicing Involves in Silica-Induced Expression of Epithelial-Mesenchymal Transition Markers and Cell Proliferation. Dose Response. 2020 May
2. Shin GC. et. al. PRKCSH contributes to tumorigenesis by selective boosting of IRE1 signaling pathway. Nat Commun. 2019 Jul

Hangzhou Huan Biotechnology Co., Ltd.

Orders:0086-571-88062880

Technical:0086-571-89986345

Service mail:support@huabio.cn

华安生物
HUABIO
www.huabio.cn