

Human Clusterin, C-His, Flag Tag Protein

HA210955



Product name:	Human Clusterin, C-His, Flag Tag
Species reactivity:	Human
Bio-Activity:	Testing in progress.
Protein construction description:	A DNA sequence encoding the human Clusterin protein (P10909-1) (Asp 23-Glu 449) was expressed with both His and Flag tag at the C-terminus.
Background:	Clusterin (apolipoprotein J) is a 75-80 kDa disulfide-linked heterodimeric protein associated with the clearance of cellular debris and apoptosis. In humans, clusterin is encoded by the CLU gene on chromosome 8. CLU is a molecular chaperone responsible for aiding protein folding of secreted proteins, and its three isoforms have been differentially implicated in pro- or antiapoptotic processes. Through this function, CLU is involved in many diseases related to oxidative stress, including neurodegenerative diseases, cancers, inflammatory diseases, and aging.
Purity:	>95% as determined by SDS-PAGE.
Endotoxin:	Less than 1.0 EU per µg by the LAL method.
Fragment region:	Clusterin (23-449)
Source:	HEK293
Accession:	P10909-1
Predicted molecular mass:	52.7 kD
Formulation:	Lyophilized from a 0.2 µm filtered solution of PBS, pH7.4, 5% Trehalose, 5% mannitol.
Reconstitution:	Reconstitute at 250 µg/ml in sterile water.
Storage:	Please avoid repeated freeze-thaw cycles. Samples are stable for up to twelve months from date of receipt at -20°C to -80°C. It is recommended that aliquot the reconstituted solution to minimize freeze-thaw cycles.

Hangzhou Huaan Biotechnology Co., Ltd.

Orders:0086-571-88062880

Technical:0086-571-89986345

Service mail:support@huabio.cn

 华安生物
HUABIO
www.huabio.cn

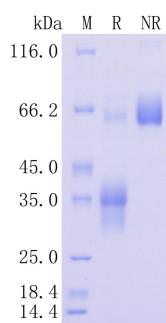


Fig1: Protein on SDS-PAGE under reducing (R) and non-reducing (NR) condition.

Note: All products are "FOR RESEARCH USE ONLY AND ARE NOT INTENDED FOR DIAGNOSTIC OR THERAPEUTIC USE".